

Alder Lounge Table Oval

Biodegradable plastic mixed with
coffee shell or wood waste

The Alder Collection by Patricia Urquiola is our first collection in biodegradable Matek™. Extensive testing and development have enabled us to use biodegradable plastic with our Matek™ technology, thus enabling the Matek™ to eventually decompose back into nature. Wishing to bring some of nature's beauty into our living spaces, Urquiola has let herself be inspired by nature in both shape and material. The collection is suitable for both private and public use.



**Biodegradable
Sand**



**Biodegradable
Earth Grey**



Designed by
Patricia Urquiola

Item no.
30101 Alder Lounge Table Square,
– Biodegradable Sand*
30102 Alder Lounge Table Square,
– Biodegradable Earth Grey*

**Variation possible due to
recycled materials*

Country of origin
Latvia

Materials
Biodegradable plastic mixed with coffee
shell waste from BKI's coffee roasting
process.

Inner frame
94% recycled steel

Special designed feet
100% recycled plastic

Test
EN 581
ANSI/BIFMA x5.5
ANSI/BIFMA x5.4

Dimensions
H 31.5 cm W 82 cm D 57.3 cm /
H 12.4" W 32.28" D 22.56"

Weight
21.9 kg / 48.3 lbs

Packaging 1 box / 1 pcs.

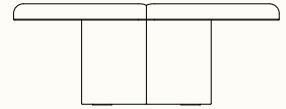
Maintenance
Please follow our material
cleaning and care guide [here](#)

Environment
Indoor

mater

Mater Sustainability Factsheet

Alder Lounge Table
Oval



Made of

Biodegradable Matek® and partly recycled steel

Item no. 30101/30102

Biodegradable Sand
Biodegradable Earth Grey

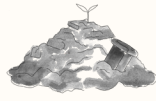
Made from biodegradable
plastic and coffee shell waste

CO₂ Footprint
120 kg CO₂e

**= 8 kg
of waste materials**

*calculated using Målbar Software V. 2.9608 21-03-2024

Mater Sustainability Factsheet



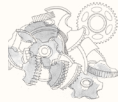
Biodegradable Matek™

Developments in our technology have enabled us to use bio-plastic as a binder for our Matek™ production. This allows the Matek™ to eventually be decomposed by living organisms in the same way as wood or any other natural material. Read more about Matek [here](#)



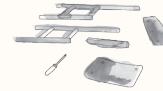
Mater Take-Back

We unhesitatingly offer to take all our furniture made from Matek™ back at the end of its life to recycle it into new furniture. Read more about how Mater Take-Back works [here](#)



Steel

The steel used for this product is composed of 94% recycled steel. Steel is a strong and light material with the quality that it can be processed in unlimited ways.



Repair for long lasting

Good products, are made to be used. To give the products the longest possible life, we want to make it easy for you to repair them yourself.

Contact our customer service for more info [here](#)



CO₂ Footprint

At Mater, we believe in the importance of transparency. By doing Life Cycle Assessments (LCA) on our furniture, we can analyse the total climate emission for each of our product's lifespan.



Green energy

This product is produced in a production facility that is 100% powered by hydropower – a renewable energy resource.



Packaging

The cardboard packing for this product is FSC-certified - both inside and out. The inner construction that secures the product during transportation is designed to function fully without any use of plastic or foam.