

# OUTDOOR TEXTILES



In collaboration with Sunbrella, one of the leading brands in fabric for outdoor upholstery, we have handpicked a selection of high-performing, durable and beautiful outdoor textiles.

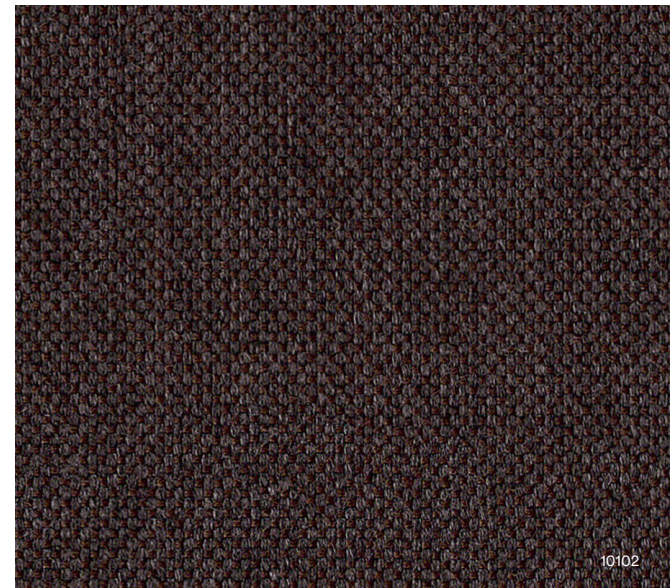


Burra Lounge Chair Outdoor in Savane, J349



## NATTÉ

Natté combines timeless sophistication with exceptional durability. Its soft, flecked surface and subtle tones bring a natural elegance to any setting. Made from 100% Sunbrella® acrylic, the braided weave is water-repellent, stain-resistant, and highly fade-resistant, making it perfect for both outdoor use.



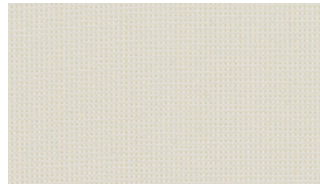
10102

<b>Manufacturer</b>	Sunbrella upholstery
<b>Price Group</b>	Outdoor 1
<b>Composition</b>	100% Sunbrella® acrylic
<b>Width</b>	140 (EN 1773)
<b>Weight</b>	290 g/m <sup>2</sup> ±5%
<b>Roll length</b>	50
<b>Environment</b>	Non PFAS, Water-Repellent & Stain-Proof
<b>Spray Test</b>	5 (ISO 4920)
<b>Fastness to rubbing</b>	Wet: 5, Dry: 5 (ISO 105 - X12)
<b>Lightfastness outdoor</b>	4-5 (ISO 105 B04 1000h)
<b>Fastness to washing</b>	5 (ISO 105 C06)
<b>Piling</b>	4 (ISO 129452)

# Material Guide Natté



**ANTIQUE** 5077



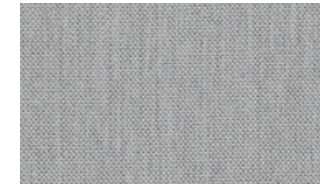
**NATURE** 10014



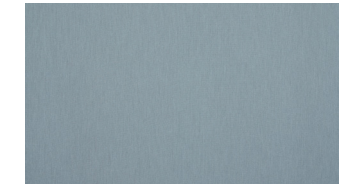
**WHITE** 10020



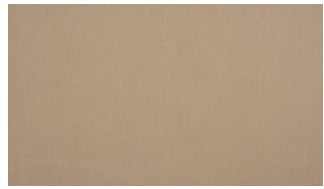
**CANVAS** 10021



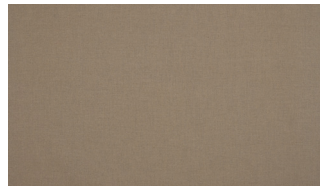
**GREY CHINE** 10022



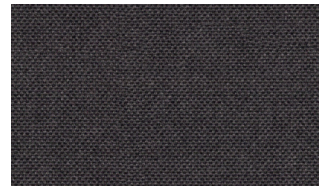
**FROSTY CHINE** 10025



**HEATHER BEIGE** 10028



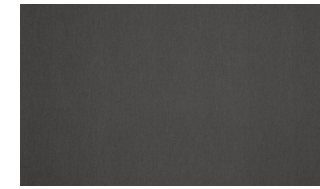
**HEATHER GREY** 10029



**SOOTY** 10030



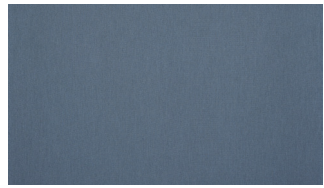
**NATURE GREY** 10040



**DARK TAUPE** 10059



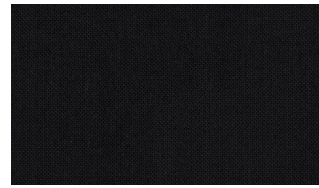
**CHARCOAL CHINE** 10063



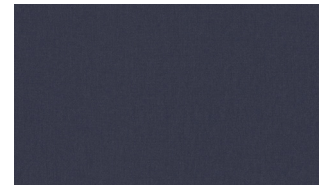
**CARBON SKY** 10064



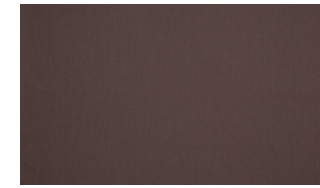
**CARBON BEIGE** 10065



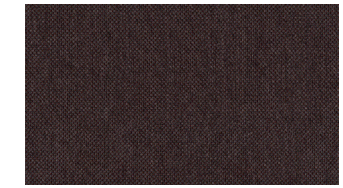
**MASCARA** 10078



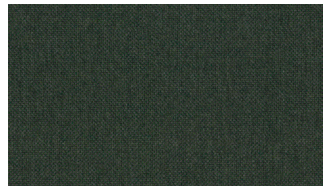
**BLUESTONE** 10083



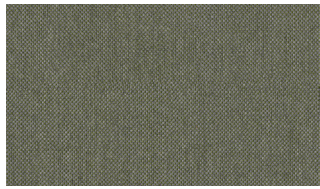
**TONKA** 10101



**CHESTNUT** 10102



**POSEDONIA** 10111



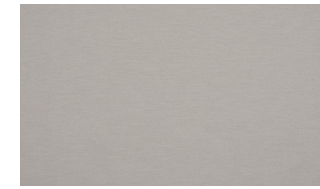
**BAMBOO** 10112



**HEATHER CHALK** 10150



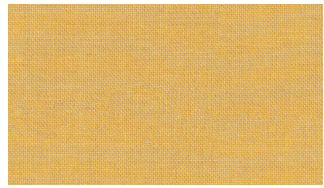
**LINEN CHALK** 10151



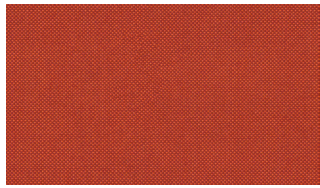
**GRAUMEL CHALK** 10152



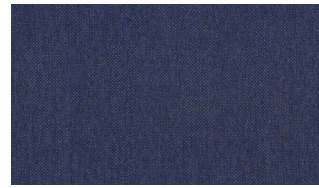
**TAUPE CHALK** 10155



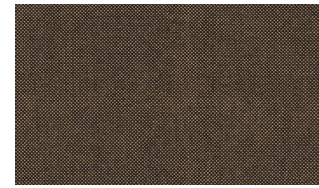
**SUNLIGHT** 10250



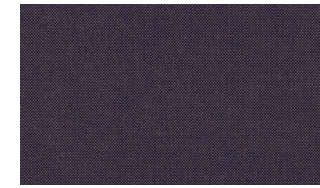
**SPRITZ** 10254



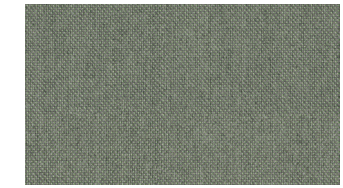
**NAXOS** 10255



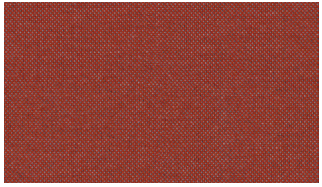
**POMPEI** 10256



**COSMOS** P094



**AGAVE** P097



JASPE

P100



## SAVANE

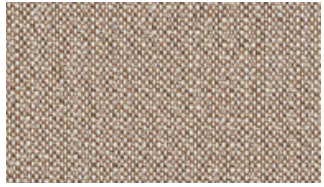
Savane is a richly textured jacquard fabric with an irregular weave that enhances seats and cushions with its natural elegance. Available in vivid, nuanced tones, the 100% Sunbrella acrylic fabric is water-repellent, stain-resistant, and easy to maintain, offering durability and refined beauty.



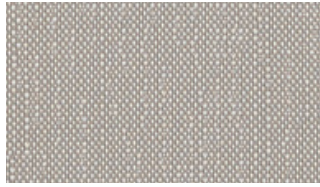
J349

<b>Manufacturer</b>	Sunbrella upholstery
<b>Price Group</b>	Outdoor 2
<b>Composition</b>	100% Sunbrella® acrylic
<b>Width</b>	140 (EN 1773)
<b>Weight</b>	430 g/m2 ±5%
<b>Roll length</b>	40
<b>Environment</b>	Non PFAS, Water-Repellent & Stain-Proof
<b>Spray Test</b>	5 (ISO 4920)
<b>Fastness to rubbing</b>	Wet: 5, Dry: 5 (ISO 105 - X12)
<b>Lightfastness outdoor</b>	4-5 (ISO 105 B04 1000h)
<b>Fastness to washing</b>	5 (ISO 105 C06)
<b>Piling</b>	5 (ISO 129452)

Material Guide Savane



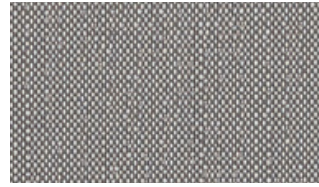
COCONUT J233



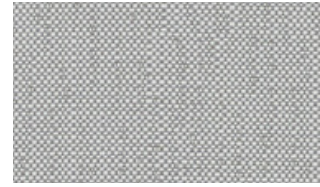
GREY J234



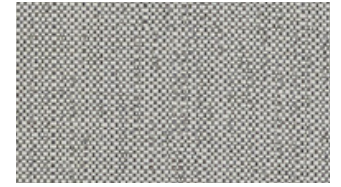
WHITE J235



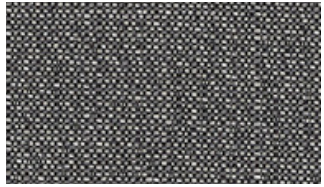
ZINC J236



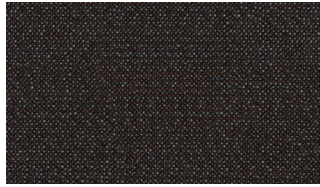
WHISPER J349



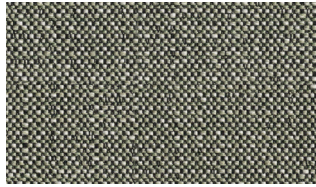
NIMBUS J350



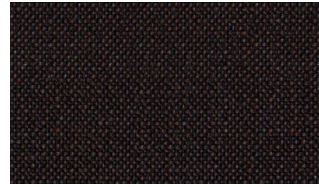
TORNADO J351



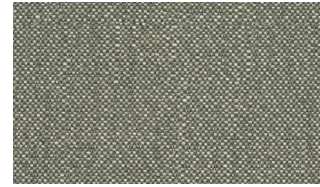
CROW J446



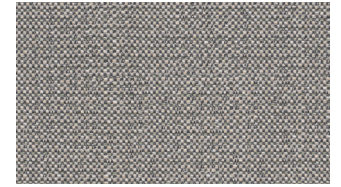
LAKE J447



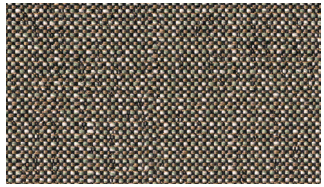
PEAT J448



SWAMP J449



METEOR J450



CHAMELEON J451





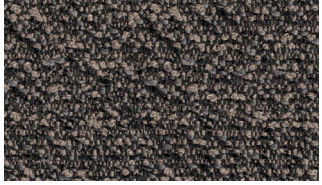
## WANDER

Wander draws inspiration from mineral elements to create warm, inviting spaces. Its textured faux-uni design, crafted from 100% Sunbrella acrylic, is perfect for seating designs, combining a soft jacquard weave with water-repellent and stain-proof performance.



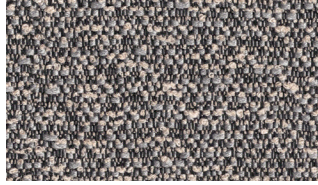
<b>Manufacturer</b>	Sunbrella upholstery
<b>Price Group</b>	Outdoor 4
<b>Composition</b>	100% Sunbrella® acrylic
<b>Width</b>	137 (EN 1773)
<b>Weight</b>	470 g/m2 ±5%
<b>Roll length</b>	35
<b>Environment</b>	Non PFAS, Water-Repellent & Stain-Proof
<b>Spray Test</b>	5 (ISO 4920)
<b>Fastness to rubbing</b>	Wet: 5, Dry: 5 (ISO 105 - X12)
<b>Lightfastness outdoor</b>	4-5 (ISO 105 B04 1000h)
<b>Fastness to washing</b>	5 (ISO 105 C06)
<b>Piling</b>	4 (ISO 129452)

Material Guide Wander



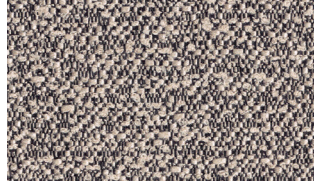
**ETNA**

J616



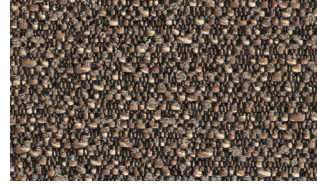
**WOLF**

J617



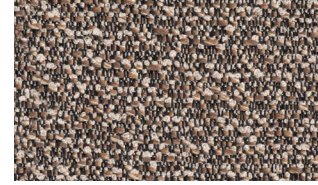
**GRANITE**

J618



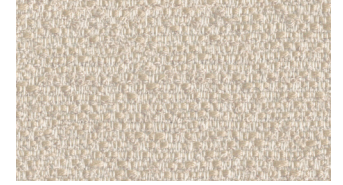
**BISON**

J619



**MANIOC**

J620



**PILAT**

J621



**GOBI**

J622



**EVEREST**

J623

# CONTACT

NORMANN COPENHAGEN

Niels Hemmingsens Gade 12,  
1153 Copenhagen, Denmark

[normann@normann-copenhagen.com](mailto:normann@normann-copenhagen.com)  
+45 35 55 44 59

**normann**  
C O P E N H A G E N