

m o o o i

Knitty Lounge Chair

NIKA ZUPANC



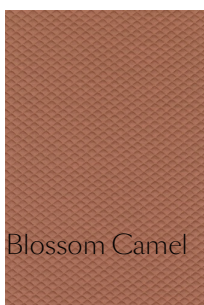
Indulge in the ultimate relaxation with Knitty Lounge Chair by Nika Zupanc. This oversized chair is crafted from extra-large yarn that resembles ship ropes, woven in a chunky basket weave for a unique tactile feel. Available in 15 colours and quilted in a diamond pattern, Knitty Lounge Chair combines scale, softness and unexpected design.

Detailing

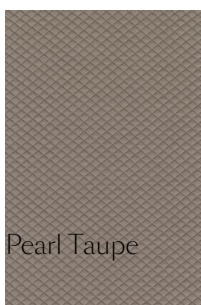


The Knitty Lounge Chair is about the pleasure of simple materials and transforming them into something unexpected that at first seemed impossible.

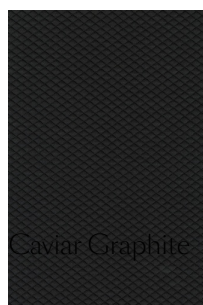
Colours



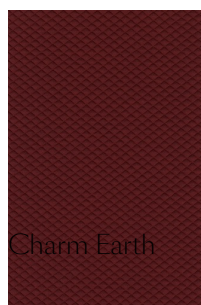
Blossom Camel



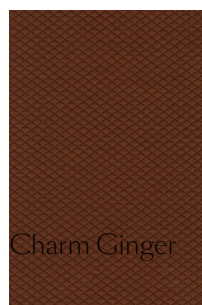
Pearl Taupe



Caviar Graphite



Charm Earth



Charm Ginger



Charm Midnight



Knitty Lounge Chair

Dimensions

100cm | 39.4"



128cm | 50.4"



45cm | 17.7"



84cm | 33.1"

Product

WIDTH 100cm | 39.4"

HEIGHT 84cm | 33.1"

DEPTH 128cm | 50.4"

WEIGHT NETTO 53kg |

116.84lbs

Packaging

WIDTH 115cm | 45.3"

HEIGHT 105cm | 41.3"

CUBAGE 1.62m³ | 57.14ft³

LENGTH 134cm | 52.8"

WEIGHT 53kg | 116.84lbs

Technical

MATERIAL

Wooden frame, steel springs, foam

SEAT DEPTH

64cm | 25.2"

SEAT HEIGHT

45cm | 17.7"

SEAT WIDTH

100cm | 39.4"

WEIGHT CAPACITY

110kg | 242.51lbs

SEAT DEPTH 2

64cm | 25.2"

SEAT HEIGHT 2

41cm | 16.1"

SEAT WIDTH 2

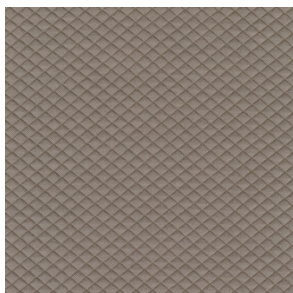
100cm | 39.4"

SEATING CAPACITY

1

Upholstery

MOSAIC 2 (available in 15 colours)



COMPOSITION

58% PES, 27% WV, 9% PA,
6% EA

ABRASION

100000 martindale
lightfastness 6 - 7
pilling 4 - 5
