


driade

FENIX

by Ludovica + Roberto Palomba



CAMPIONARIO TESSUTI-PELLI/ FABRIC-LEATHER SAMPLES

 **N.B.:** From June 25, 2021, all upholstered seating furniture imported or sold in the United States must comply with the flammability test specified by California Technical Bulletin 117-2013 (aka "SOFFA"). This solution is compatible only with fabrics and/or materials that contains a minimum of 75% of natural fibers. The following are the only fabrics suitable among those in our current range: Barcellona, Cairo, Cipro outdoor, Delhi, Lisbona, Santorini outdoor.





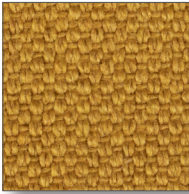






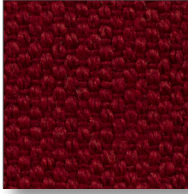




driade s.r.l. Alzaia Trieste 49 - 20094 Corsico (Mi) Italy t. +39 0523 818618
Customer Service e-mail: ccare.ecommerce@driade.com
www.driade.com

CAT.A

700 COTONE BONIFACIO - COTTON BONIFACIO

Composizione/Composition: 100% CO Altezza/Height:138/140 cm. Peso/Weight: 560gr. Abrasione/Abrasion: 20.000 Martindale (uso pubblico, uso regolare/public use, regular use).
BS5852:0 1979 ign cigarette test pass.



	002 BIANCO <i>WHITE</i>		004 AVORIO <i>IVORY</i>		016 TORTORA <i>TAUPE</i>		080 MARRONE CHIARO <i>LIGHT BROWN</i>
	019 OCRA <i>OCHRE</i>		062 VERDE CHIARO <i>LIGHT GREEN</i>		066 VERDE SCURO <i>DARK GREEN</i>		H03 VERDE ACQUA <i>TEAL</i>
	061 AZZURRO INDACO <i>INDIGO BLUE</i>		024 ROSA <i>PINK</i>		039 ROSSO <i>RED</i>		040 BORDEAUX <i>BURGUNDY</i>
	072 BLU <i>BLUE</i>		045 GRIGIO CHIARO <i>LIGHT GREY</i>		050 GRIGIO SCURO <i>DARK GREY</i>		091 NERO <i>BLACK</i>

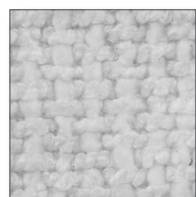
I colori sono indicativi. Non è possibile garantire uniformità di tono nella tintura dei lotti di tessuto. Resta inteso che lievi differenze di colore verranno accettate al momento dell'ordine.

The colors are just indicative. Actually a steady tone of lots cannot be guaranteed. It remains understood that any slight colour difference will be accepted in case an order is placed.

CAT.A

701 POLIESTERE MARSIGLIA - *POLYESTER MARSIGLIA*

Composizione/Composition: 100% PL. Altezza/Height: 140 cm. Peso/Weight: 840gr. Abrasione/Abrasion: 80.000 Martindale (uso pubblico, uso molto intensivo/public use, very intensive use. Idrorepellente, irrestringibile/Water repellent, unbreakable.



002
BIANCO
WHITE



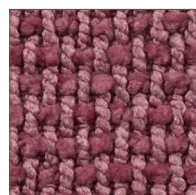
004
AVORIO
IVORY



016
TORTORA
TAUPE



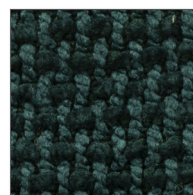
018
GIALLO CHIARO
LIGHT YELLOW



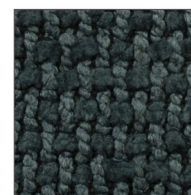
024
ROSA
PINK



063
VERDE
GREEN



066
VERDE SCURO
DARK GREEN



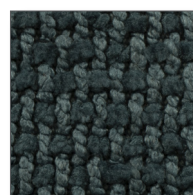
069
PETROLIO
PETROL GREEN



072
BLU
BLUE



045
GRIGIO CHIARO
LIGHT GREY



050
GRIGIO SCURO
DARK GREY

I colori sono indicativi. Non è possibile garantire uniformità di tono nella tintura dei lotti di tessuto. Resta inteso che lievi differenze di colore verranno accettate al momento dell'ordine.

The colors are just indicative. Actually a steady tone of lots cannot be guaranteed. It remains understood that any slight colour difference will be accepted in case an order is placed.

CAT.A

702 MISTO COTONE PETRA - COTTON MIX PETRA

Composizione/Composition: 50% CO riciclato/recycled CO, 35% PL, 15% PC. Altezza/Height: 140 cm. Peso/Weight: 490gr. Abrasione/Abrasion: 20.000 Martindale (uso pubblico, uso regolare/public use, regular use). Antigoccia, idrorepellente/Anti-drip, water repellent.



002
BIANCO
WHITE



011
SABBIA
SAND



016
TORTORA
TAUPE



H18
ORO
GOLD



040
BORDEAUX
BURGUNDY



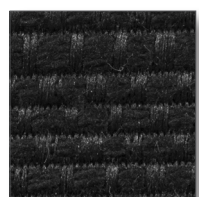
063
VERDE
GREEN



085
TESTA DI MORO
DARK BROWN



072
BLU
BLUE



091
NERO
BLACK

I colori sono indicativi. Non è possibile garantire uniformità di tono nella tintura dei lotti di tessuto. Resta inteso che lievi differenze di colore verranno accettate al momento dell'ordine.

The colors are just indicative. Actually a steady tone of lots cannot be guaranteed. It remains understood that any slight colour difference will be accepted in case an order is placed.

CAT.A

703 MISTO COTONE DAMASCO - COTTON MIX DAMASCO

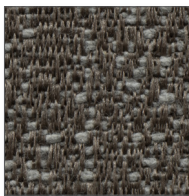
Composizione/Composition: 50% CO riciclato/recycled CO, 35% PL, 15% PC. Altezza/Height: 140 cm. Peso/Weight: 590gr. Abrasione/Abrasion: 24.000 Martindale (uso pubblico, uso regolare/public use, regular use). Antigoccia, idrorepellente/Anti-drip, water repellent.



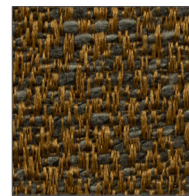
002
BIANCO
WHITE



011
SABBIA
SAND



016
TORTORA
TAUPE



H18
ORO
GOLD



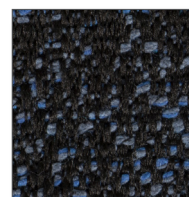
040
BORDEAUX
BURGUNDY



063
VERDE
GREEN



085
TESTA DI MORO
DARK BROWN



072
BLU
BLUE



091
NERO
BLACK

I colori sono indicativi. Non è possibile garantire uniformità di tono nella tintura dei lotti di tessuto. Resta inteso che lievi differenze di colore verranno accettate al momento dell'ordine.

The colors are just indicative. Actually a steady tone of lots cannot be guaranteed. It remains understood that any slight colour difference will be accepted in case an order is placed.

CAT.A

02 ECOPELLE COLORADO - COLORADO ECOLEATHER

Composizione/Composition: 68% PVC, 30% CO, 2% PU. Altezza/Height: 140 cm. Peso/Weight: 460 gr/mq. Abrasione/Abrasion: 100.000 Martindale (uso pubblico, uso molto intensivo/
public use, very intensive use). Spessore/Thickness 1.0/1.1 mm

PULIRE SOLO CON PANNINO UMIDO E DETERGENTE NEUTRO/CLEAN ONLY WITH A DAMP CLOTH AND A NEUTRAL DETERGENT



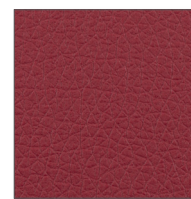
002
BIANCO
WHITE



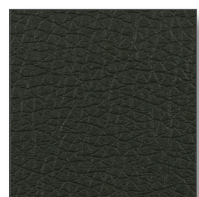
004
AVORIO
IVORY



015
BEIGE
BEIGE



039
ROSSO
RED



066
VERDE SCURO
DARK GREEN



072
BLU
BLUE



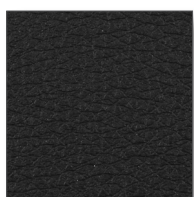
045
GRIGIO CHIARO
LIGHT GREY



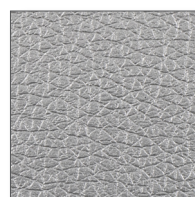
044
GRIGIO
GREY



081
MARRONE
BROWN



091
NERO
BLACK



042
PERLA
PEARL



077
RUGGINE
RUSSET

I colori sono indicativi. Non è possibile garantire uniformità di tono nella tintura dei lotti di tessuto. Resta inteso che lievi differenze di colore verranno accettate al momento dell'ordine.

The colors are just indicative. Actually a steady tone of lots cannot be guaranteed. It remains understood that any slight colour difference will be accepted in case an order is placed.

CAT.B

704 MISTO POLIESTERE BERLINO - *POLYESTER MIX BERLINO*

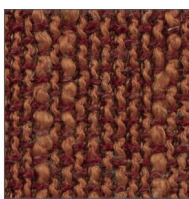
Composizione/Composition: 68% PL, 20% CO, 12% LI. Altezza/Height: 140 cm. Peso/Weight: 670gr. Abrasione/Abrasion: 65.000 Martindale (uso pubblico, uso molto intensivo/public use, very intensive use). BS5852, Antigoccia, idrorepellente/Anti-drip, water repellent.



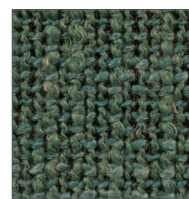
004
AVORIO
IVORY



011
SABBIA
SAND



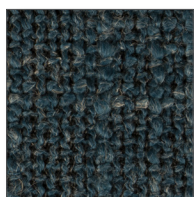
033
ARANCIO
ORANGE



H03
VERDE ACQUA
AQUA GREEN



063
VERDE
GREEN



070
BLU CHIARO
LIGHT BLUE



050
GRIGIO SCURO
DARK GREY

I colori sono indicativi. Non è possibile garantire uniformità di tono nella tintura dei lotti di tessuto. Resta inteso che lievi differenze di colore verranno accettate al momento dell'ordine.

The colors are just indicative. Actually a steady tone of lots cannot be guaranteed. It remains understood that any slight colour difference will be accepted in case an order is placed.

CAT.B

705 POLIESTERE JAKARTA - POLYESTER JAKARTA

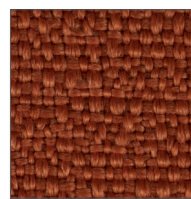
Composizione/Composition: 100% PL riciclato biodegradabile/PL recycled biodegradable. Altezza/Height: 140 cm. Peso/Weight: 800gr. Abrasione/Abrasion: 100.000 Martindale (uso pubblico, uso molto intensivo/public use, very intensive use).



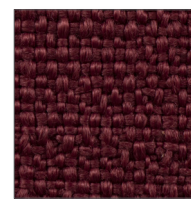
004
AVORIO
IVORY



016
TORTORA
TAUPE



033
ARANCIO
ORANGE



040
BORDEAUX
BURGUNDY



070
BLU CHIARO
LIGHT BLUE



066
VERDE SCURO
DARK GREEN



083
MARRONE SCURO
DARK BROWN



041
GRIGIO GHIACCIO
ICE GREY



060
GRIGIO SCURO
DARK GREY

I colori sono indicativi. Non è possibile garantire uniformità di tono nella tintura dei lotti di tessuto. Resta inteso che lievi differenze di colore verranno accettate al momento dell'ordine.

The colors are just indicative. Actually a steady tone of lots cannot be guaranteed. It remains understood that any slight colour difference will be accepted in case an order is placed.

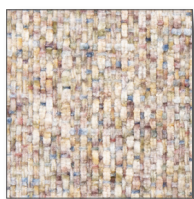
CAT.B

706 POLIESTERE GINEVRA - *POLYESTER GINEVRA*

Composizione/Composition: 100% PL. Altezza/Height: 140 cm. Peso/Weight: 460gr. Abrasione/Abrasion: 25.000 Martindale (uso pubblico, uso regolare/public use, regular use).



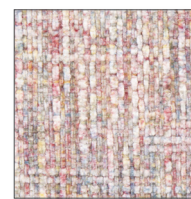
004
AVORIO
IVORY



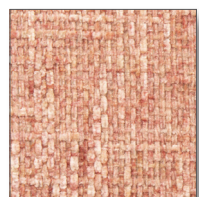
011
SABBIA
SAND



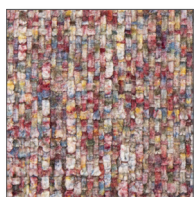
016
TORTORA
TAUPE



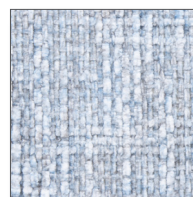
H19
ROSA CHIARO
LIGHT PINK



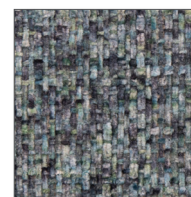
H20
ROSA SCURO
DARK PINK



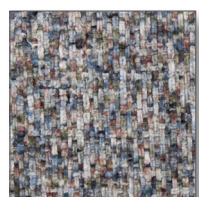
040
BORDEAUX
BURGUNDY



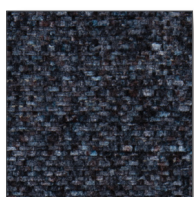
060
AZZURRO
LIGHT BLUE



069
PETROLIO
PETROL GREEN



071
BLU MEDIO
MEDIUM BLUE



073
BLU SCURO
DARK BLUE

I colori sono indicativi. Non è possibile garantire uniformità di tono nella tintura dei lotti di tessuto. Resta inteso che lievi differenze di colore verranno accettate al momento dell'ordine.







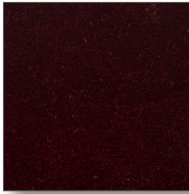

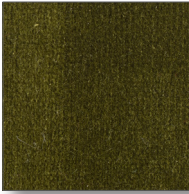

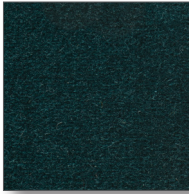






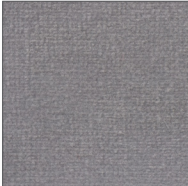
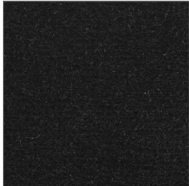

The colors are just indicative. Actually a steady tone of lots cannot be guaranteed. It remains understood that any slight colour difference will be accepted in case an order is placed.

CAT.C

032 VELLUTO LOIRA - *VELVET LOIRA*

Composizione/Composition: 100% Velluto di cotone/Cotton velvet. Altezza/Height: 140 cm. Peso/Weight: 630gr. Abrasione/Abrasion: 100.000 Martindale (uso pubblico, uso molto intensivo/public use, very intensive use). CALTB117, BS5852 part 1 schedule 4 source 0



	004 AVORIO <i>IVORY</i>		011 SABBIA <i>SAND</i>		016 TORTORA <i>TAUPE</i>		024 ROSA <i>PINK</i>
	039 ROSSO <i>RED</i>		038 ROSSO SCURO <i>DARK RED</i>		040 BORDEAUX <i>BURGUNDY</i>		031 VIOLA SCURO <i>DARK VIOLET</i>
	063 VERDE <i>GREEN</i>		066 VERDE SCURO <i>DARK GREEN</i>		069 PETROLIO <i>PETROL GREEN</i>		071 BLU MEDIO <i>MEDIUM BLUE</i>
	E20 BLU NOTTE <i>NIGHTBLUE</i>		072 BLU <i>BLUE</i>		073 BLU SCURO <i>DARK BLUE</i>		044 GRIGIO <i>GREY</i>
	083 MARRONE SCURO <i>DARK BROWN</i>		041 GRIGIO GHIACCIO <i>ICE GREY</i>		050 GRIGIO SCURO <i>DARK GREY</i>		091 NERO <i>BLACK</i>

I colori sono indicativi. Non è possibile garantire uniformità di tono nella tintura dei lotti di tessuto. Resta inteso che lievi differenze di colore verranno accettate al momento dell'ordine.

The colors are just indicative. Actually a steady tone of lots cannot be guaranteed. It remains understood that any slight colour difference will be accepted in case an order is placed.

CAT.C

036 MISTO LINO LISBONA - LINEN MIX LISBONA

Composizione/Composition: 72% LI, 14% CO, 14% VI. Altezza/Height: 140 cm. Peso/Weight: 735gr. Abrasione/Abrasion: 25.000 Martindale (uso pubblico, uso regolare/public use, regular use).



	002 BIANCO WHITE		011 SABBIA SAND		078 NOCCIOLA HAZEL		039 ROSSO RED
	060 AZZURRO LIGHT BLUE		062 VERDE CHIARO LIGHT GREEN		066 VERDE SCURO DARK GREEN		072 BLU BLUE
	069 PETROLIO PETROL GREEN		045 GRIGIO CHIARO LIGHT GREY		050 GRIGIO SCURO DARK GREY		091 NERO BLACK

I colori sono indicativi. Non è possibile garantire uniformità di tono nella tintura dei lotti di tessuto. Resta inteso che lievi differenze di colore verranno accettate al momento dell'ordine.

The colors are just indicative. Actually a steady tone of lots cannot be guaranteed. It remains understood that any slight colour difference will be accepted in case an order is placed.

CAT.C

709 POLIPROPILENE AMBURGO - *POLYPROPYLENE AMBURGO*

Composizione/Composition: 100% PP. Altezza/Height: 140 cm. Peso/Weight: 1050 gr. Abrasione/Abrasion: 40.000 Martindale (uso pubblico, uso molto intensivo/public use, very intensive use). CAL117, BS5852 Cigaret test



002
BIANCO
WHITE



011
SABBIA
SAND



045
GRIGIO CHIARO
LIGHT GREY



073
BLU SCURO
DARK BLUE



057
ANTRACITE
ANTHRACITE GREY

I colori sono indicativi. Non è possibile garantire uniformità di tono nella tintura dei lotti di tessuto. Resta inteso che lievi differenze di colore verranno accettate al momento dell'ordine.

The colors are just indicative. Actually a steady tone of lots cannot be guaranteed. It remains understood that any slight colour difference will be accepted in case an order is placed.

CAT.C

040 LINO BARCELLONA - LINEN BARCELLONA

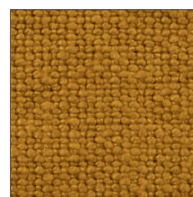
Composizione/Composition: 100% L. Altezza/Height: 138/140 cm. Peso/Weight: 680gr. Abrasione/Abrasion: 30.000 Martindale (uso pubblico, uso intensivo/public use, intensive use).
BS5852:0 1979 ign cigarette test pass



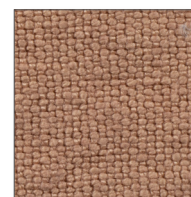
004
AVORIO
IVORY



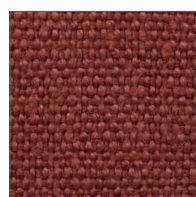
011
SABBIA
SAND



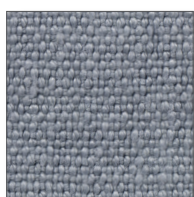
020
GIALLO SENAPE
MUSTARD YELLOW



024
ROSA
PINK



036
ROSSO ANTICO
ANTIQUE RED



060
AZZURRO
LIGHT BLUE



072
BLU
BLUE



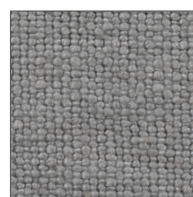
066
VERDE SCURO
DARK GREEN



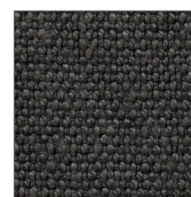
080
MARRONE CHIARO
LIGHT BROWN



083
MARRONE SCURO
DARK BROWN



045
GRIGIO CHIARO
LIGHT GREY



050
GRIGIO SCURO
DARK GREY

I colori sono indicativi. Non è possibile garantire uniformità di tono nella tintura dei lotti di tessuto. Resta inteso che lievi differenze di colore verranno accettate al momento dell'ordine.

The colors are just indicative. Actually a steady tone of lots cannot be guaranteed. It remains understood that any slight colour difference will be accepted in case an order is placed.

CAT.D

712 MISTO LANA MALMÖ - WOOL MIX MALMÖ

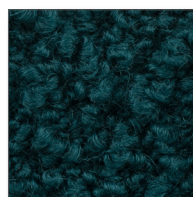
Composizione/Composition: 32% CO, 61% VW, 7% PA. Altezza/Height: 140 cm. Peso/Weight: 1200gr. Abrasione/Abrasion: 25.000 Martindale (uso pubblico, uso regolare/public use, regular use).



002
BIANCO
WHITE



011
SABBIA
SAND



069
PETROLIO
PETROL GREEN



072
BLU
BLUE



045
GRIGIO CHIARO
LIGHT GREY



050
GRIGIO SCURO
DARK GREY

I colori sono indicativi. Non è possibile garantire uniformità di tono nella tintura dei lotti di tessuto. Resta inteso che lievi differenze di colore verranno accettate al momento dell'ordine.

The colors are just indicative. Actually a steady tone of lots cannot be guaranteed. It remains understood that any slight colour difference will be accepted in case an order is placed.

CATE

713 LANA DIVINA (KVADRAT) - WOOL DIVINA (KVADRAT)

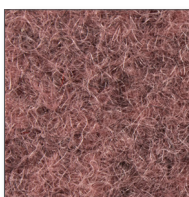
Composizione/Composition: 100% VW. Altezza/Height: 150 cm. Peso/Weight: 840gr. Abrasione/Abrasion: 45.000 Martindale (uso pubblico, uso molto intensivo/public use, very intensive use), CAL117, crib51MOFTP,UNI9175 11M



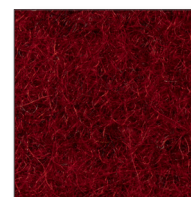
011
SABBIA
SAND



021
GIALLO
YELLOW



024
ROSA
PINK



039
ROSSO
RED



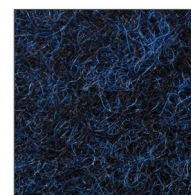
060
AZZURRO
LIGHT BLUE



066
VERDE SCURO
DARK GREEN



081
MARRONE
BROWN



073
BLU SCURO
DARK BLUE



045
GRIGIO CHIARO
LIGHT GREY



091
NERO
BLACK

I colori sono indicativi. Non è possibile garantire uniformità di tono nella tintura dei lotti di tessuto. Resta inteso che lievi differenze di colore verranno accettate al momento dell'ordine.

The colors are just indicative. Actually a steady tone of lots cannot be guaranteed. It remains understood that any slight colour difference will be accepted in case an order is placed.

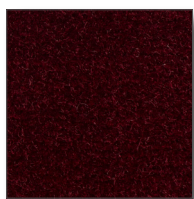
CATE

714 COTONE VENEZIA - COTTON VENEZIA

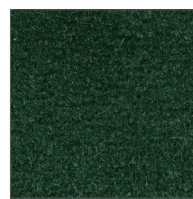
Composizione/Composition: 100% CO. Altezza/Height: 140 cm. Peso/Weight: 1200gr. Abrasione/Abrasion: 50.000 Martindale, CAL TB117 (uso pubblico, uso molto intensivo/public use, very intensive use).



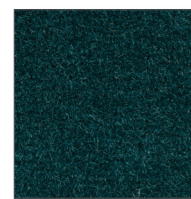
002
BIANCO
WHITE



040
BORDEAUX
BURGUNDY



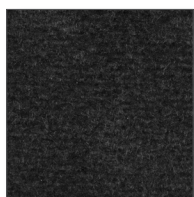
062
VERDE CHIARO
LIGHT GREEN



066
VERDE SCURO
DARK GREEN



073
BLU SCURO
DARK BLUE



050
GRIGIO SCURO
DARK GREY

I colori sono indicativi. Non è possibile garantire uniformità di tono nella tintura dei lotti di tessuto. Resta inteso che lievi differenze di colore verranno accettate al momento dell'ordine.

The colors are just indicative. Actually a steady tone of lots cannot be guaranteed. It remains understood that any slight colour difference will be accepted in case an order is placed.

CAT.P

050 PELLE NIAGARA - LEATHER NIAGARA

Chrome tanning bovine raw hides, pigmented, corrected grain, aniline through dyed. Thickness: 1.4/1.6 mm

PULIRE SOLO CON PANNINO UMIDO E DETERGENTE NEUTRO/CLEAN ONLY WITH A DAMP CLOTH AND A NEUTRAL DETERGENT



002
BIANCO
WHITE



015
BEIGE
BEIGE



003
POLVERE
DUSTY



011
SABBIA
SAND



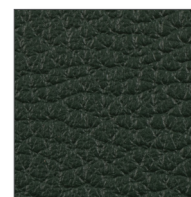
021
GIALLO
YELLOW



033
ARANCIO
ORANGE



039
ROSSO
RED



E21
COCCO
COCONUT



090
AVANA
HAVANA



081
MARRONE
BROWN



044
GRIGIO
GREY



050
GRIGIO SCURO
DARK GREY



091
NERO
BLACK

I colori sono indicativi. Non è possibile garantire uniformità di tono nella tintura dei lotti di tessuto. Resta inteso che lievi differenze di colore verranno accettate al momento dell'ordine.

The colors are just indicative. Actually a steady tone of lots cannot be guaranteed. It remains understood that any slight colour difference will be accepted in case an order is placed.

CAT.O

049 PELLE RIO - *LEATHER RIO*

Chrome tanning, bovine of European origin, lightly buffed natural grain, pigmented and protective coat, with a soft, waxy feel and semi-matt appearance. Thickness: 0.9/1.1 mm

PULIRE SOLO CON PANNINO UMIDO E DETERGENTE NEUTRO/CLEAN ONLY WITH A DAMP CLOTH AND A NEUTRAL DETERGENT

	002 BIANCO <i>WHITE</i>		E22 LATTE <i>MILK</i>		004 AVORIO <i>IVORY</i>		011 SABBIA <i>SAND</i>
	016 TORTORA <i>TAUPE</i>		021 GIALLO <i>YELLOW</i>		033 ARANCIO <i>ORANGE</i>		039 ROSSO <i>RED</i>
	040 BORDEAUX <i>BURGUNDY</i>		E23 PRUGNA <i>PLUM</i>		066 VERDE SCURO <i>DARK GREEN</i>		060 AZZURRO <i>LIGHT BLUE</i>
	072 BLU <i>BLUE</i>		E20 BLU NOTTE <i>DARK BLUE</i>		080 MARRONE CHIARO <i>LIGHT BROWN</i>		083 MARRONE SCURO <i>DARK BROWN</i>
	044 GRIGIO <i>GREY</i>		050 GRIGIO SCURO <i>DARK GREY</i>		091 NERO <i>BLACK</i>		

I colori sono indicativi. Non è possibile garantire uniformità di tono nella tintura dei lotti di tessuto. Resta inteso che lievi differenze di colore verranno accettate al momento dell'ordine.

The colors are just indicative. Actually a steady tone of lots cannot be guaranteed. It remains understood that any slight colour difference will be accepted in case an order is placed.

CAT.ZC

051 PELLE CHURCHILL - LEATHER CHURCHILL

Chrome tanning, bull hides with european origin, aniline - full grain, through dyeing aniline. Thickness: 1.0/1.2 mm

PULIRE SOLO CON PANNINO UMIDO E DETERGENTE NEUTRO/CLEAN ONLY WITH A DAMP CLOTH AND A NEUTRAL DETERGENT



003
POLVERE
DUSTY



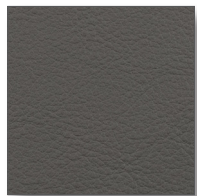
084
CUOIO
LEATHER



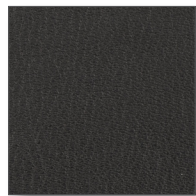
081
MARRONE
BROWN



085
TESTA DI MORO
DARK BROWN



045
GRIGIO CHIARO
LIGHT GREY



057
ANTRACITE
ANTHRACITE

I colori sono indicativi. Non è possibile garantire uniformità di tono nella tintura dei lotti di tessuto. Resta inteso che lievi differenze di colore verranno accettate al momento dell'ordine.

The colors are just indicative. Actually a steady tone of lots cannot be guaranteed. It remains understood that any slight colour difference will be accepted in case an order is placed.

CAT.ZME

052 PELLE AMUR - LEATHER AMUR

Through dyed, bovine of European origin, with a distressed vintage effect, this high quality article is obtained starting with nubuck leather, which is slightly levelled with aniline and hand rubbed to give an aged effect. Thickness: 0.9/1.1 mm

PULIRE SOLO CON PANNINO UMIDO E DETERGENTE NEUTRO/CLEAN ONLY WITH A DAMP CLOTH AND A NEUTRAL DETERGENT



011
SABBIA
SAND



016
TORTORA
TAUPE



024
ROSA
PINK



090
AVANA
HAVANA



083
MARRONE SCURO
DARK BROWN



045
GRIGIO CHIARO
LIGHT GREY



057
ANTRACITE
ANTHRACITE

I colori sono indicativi. Non è possibile garantire uniformità di tono nella tintura dei lotti di tessuto. Resta inteso che lievi differenze di colore verranno accettate al momento dell'ordine.

The colors are just indicative. Actually a steady tone of lots cannot be guaranteed. It remains understood that any slight colour difference will be accepted in case an order is placed.

CAT.ZA

054 PELLE PURUS - LEATHER PURUS

Chrome tanning, aniline dyed, semi aniline full grain, European bovine hide. Thickness: 1.0/1.2 mm

PULIRE SOLO CON PANNINO UMIDO E DETERGENTE NEUTRO/CLEAN ONLY WITH A DAMP CLOTH AND A NEUTRAL DETERGENT



002
BIANCO
WHITE



004
AVORIO
IVORY



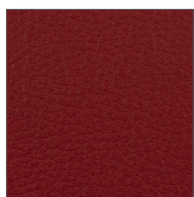
152
NUDE
CARNATION



016
TORTORA
TAUPE



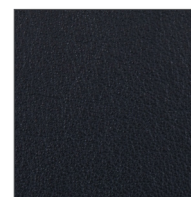
033
ARANCIO
ORANGE



039
ROSSO
RED



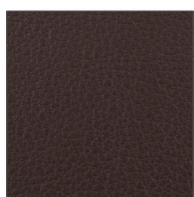
040
BORDEAUX
BURGUNDY



073
BLU SCURO
DARK BLUE



084
CUOIO
LEATHER



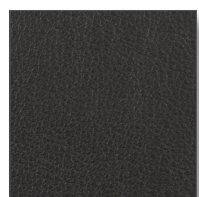
E24
COGNAC
COGNAC



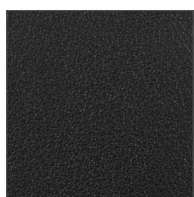
083
MARRONE SCURO
DARK BROWN



045
GRIGIO CHIARO
LIGHT GREY



050
GRIGIO SCURO
DARK GREY



091
NERO
BLACK

I colori sono indicativi. Non è possibile garantire uniformità di tono nella tintura dei lotti di tessuto. Resta inteso che lievi differenze di colore verranno accettate al momento dell'ordine.

The colors are just indicative. Actually a steady tone of lots cannot be guaranteed. It remains understood that any slight colour difference will be accepted in case an order is placed.

