

poode



CLOSE TO YOU

COLLECTION 2022







CONTENTS

Pode

- 2** Taking more freedom
- 4** The great thing about facts
- 6** Passionate craftsmanship
- 58** Kvadrat knitwear

Other

- 106** Fabrics and other materials
- 114** Dimensions
- 126** Service & guarantee

Designers

- 16** Federica Biasi
- 23** Raw Color
- 32** Roderick Vos
- 39** Susanne de Graef
- 44** Yonoh
- 61** Kranen/Gille
- 66** Jet Dircks
- 73** Meike Harde
- 81** Claire Vos
- 97** Michael Raasch

Collection

- 12** Marv
- 17** Chap
- 22** Mesh
- 26** Turia
- 30** Tripod
- 33** Bibo
- 38** Colla
- 42** Tubble
- 45** Cabut
- 48** Fold
- 54** Sparkle
- 56** Spot
- 60** Bottle Stool
- 62** Nihan
- 67** Edit
- 70** Insert
- 72** Ova
- 76** Unda
- 80** Punto
- 82** Cord
- 83** Nastro
- 84** Rye
- 85** Haze
- 85** Puff
- 86** Swell
- 87** Abstract
- 88** Melloo
- 94** Transit
- 96** Uturn
- 98** Pylaz
- 99** Osun
- 100** Pom



**TAKING
MORE
FREEDOM**

As Pode's art directors, Claire & Roderick Vos overlook the brand's DNA. That goes far beyond just putting the collection together.

The couple also keep a close eye on the look and feel of the brand. "Our designs mustn't be overpowering. Instead, they should inspire our customers to discover their own style."

"Pode's DNA is a contemporary brand," says Claire Vos. With her partner Roderick Vos, as art directors they watch over the Pode collection and presentation. "The collection is fresh and a little bit quirky, so it's aimed at a somewhat younger audience." But, adds Roderick, it is also important that the collection is timeless. "It should always be possible to combine our items of furniture – not just with each other but also with other brands or other styles of furniture." The next step is to become more international. "That is why we asked designers like Yonoh Studio from Spain, Meike Harde from Germany and Federica Biasi from Italy to design for us."

Claire and Roderick Vos have known each other since they studied together at the Eindhoven Design Academy in the 1990s. Since 1999, they have worked together at Studio Roderick Vos. In the upstairs room of their 17th-century home there are Power Macs on the table and display cabinets overflowing with prototypes and fabric samples. "This is where we watch over the consistency of the collection, asking questions such as: Is a design compatible with the existing products? Which items of furniture are still missing? And in that way we build on that Pode DNA."

Individual roles

In the studio, they each have their own individual

roles. Roderick: "I'm more the industrial designer. The nerd who's busy for days on the technical structure of a lamp or a chair leg. So I'm also closely involved in product development. Pode is part of the leading Leolux Furniture Group, which has its own factories. That makes product development high-quality and cost-effective. During the design process, we already know the most efficient way of creating an item of furniture." When asked about Claire, he says: "She's more the communicator who thinks in moods and eye-catching images. The look and feel of how Pode presents itself in ads, magazines or exhibition stands all come from her."

Over the past five years, the duo have developed a recognisable identity for Pode. "But a brand must keep developing. The collection has become less static and more exuberant, with more colour and a bolder design language. As a brand, we've reached puberty," laughs Roderick. "We're now willing to take more chances."

Fashion for furniture

The confidence of the young but already established brand is reflected in the way they present their products. "For this magazine, we were inspired by the world of Salvador Dalí. The mood is dreamy rather than presenting ready-made ensembles. Design should never be coercive but should offer customers space to create their own individual atmosphere with colour and materials. We're introducing fashion for furniture. What's your style? What makes you feel happy? That's the dialogue we want to have with our customers. So that they can discover their style themselves."

THE GREAT THING ABOUT FACTS

Furniture and accessories that complement each other perfectly in terms of visual language, colour and feeling.

For example, when you fall in love with somebody or something, it just happens; it's not something you calculate in advance. At Pode we obviously hope that the choice you make with your heart leads to our collection. Fortunately, there are also plenty of rational reasons for choosing Pode.

Design that makes you smile

For us, furniture is more than just a single design. We offer you a complete lifestyle collection of furniture and accessories designed by international top designers, all of whom complement each other perfectly in terms of visual language, colour and feeling.

Comfort and quality based on knowledge

You can enjoy Pode furniture for years. That's because all our products are based on Leolux Furniture Group's craftsmanship and years of experience. Our 'mother ship' has been making high-quality design furniture for almost 85 years and that expertise shines through in every Pode product. And high-quality products should always

be accompanied by professional and personal advice. Which is why we're so proud of the many expert dealers around the world who are ready to help you.

Affordable with an excellent guarantee

As you can imagine, we want to make the Pode lifestyle accessible to as many people as possible. That's why we're raising the bar to the highest level when it comes to the quality and appearance of our products. But not when it comes to the price. What's more, we also give you a 2 year guarantee for extra assurance.

A mix of the loveliest materials

The quality of our products is also down to the suppliers that we work with, of course. Which is why we purchase not only our materials and leather, but also our foam, wood, metal and every other material that we use, from reputable suppliers. And that's the great thing about facts: you can use them to validate what you had decided to do anyway.





PASSIONATE CRAFTSMANSHIP

FROM SKETCH TO FURNITURE

Anyone who thinks that Pode furniture comes from a factory is absolutely right. But anyone who thinks that it comes from an assembly line is mistaken.

Pode furniture is made by real craftspeople. The process starts by creating a prototype at our development department in Venlo. That's where the idea really comes to life and where the designer's 2-dimensional sketches are made into real 3-dimensional objects. And then it's all about practical details, about the finer aspects that make the end product better. An extra angle in the cushion foam can make a sofa more comfortable. And a slightly wider wood joint can double the life span,

while a double seam can improve both the quality and the design. But sometimes it's more about leaving things out rather than putting things in. That too can make an item of furniture more attractive and more effective.

It is only when the designer and the product developer are in agreement that a Pode item of furniture will go into production. In our ultra-modern factories in Hungary and the Netherlands, where high-tech and traditional crafts go hand in hand.

THE SEAMSTRESS



Just like in times gone by, the stitching done by Gabriella is intended primarily for holding the upholstery of your furniture together. People are fortunately realising more and more that a decorative stitching adds value to the design of an item of furniture.

The upholsterer



The woodworker



Not forgetting: Wil, the lacquer specialist. He makes sure that wooden table tops, legs and armrests are sanded, lacquered and stained properly.

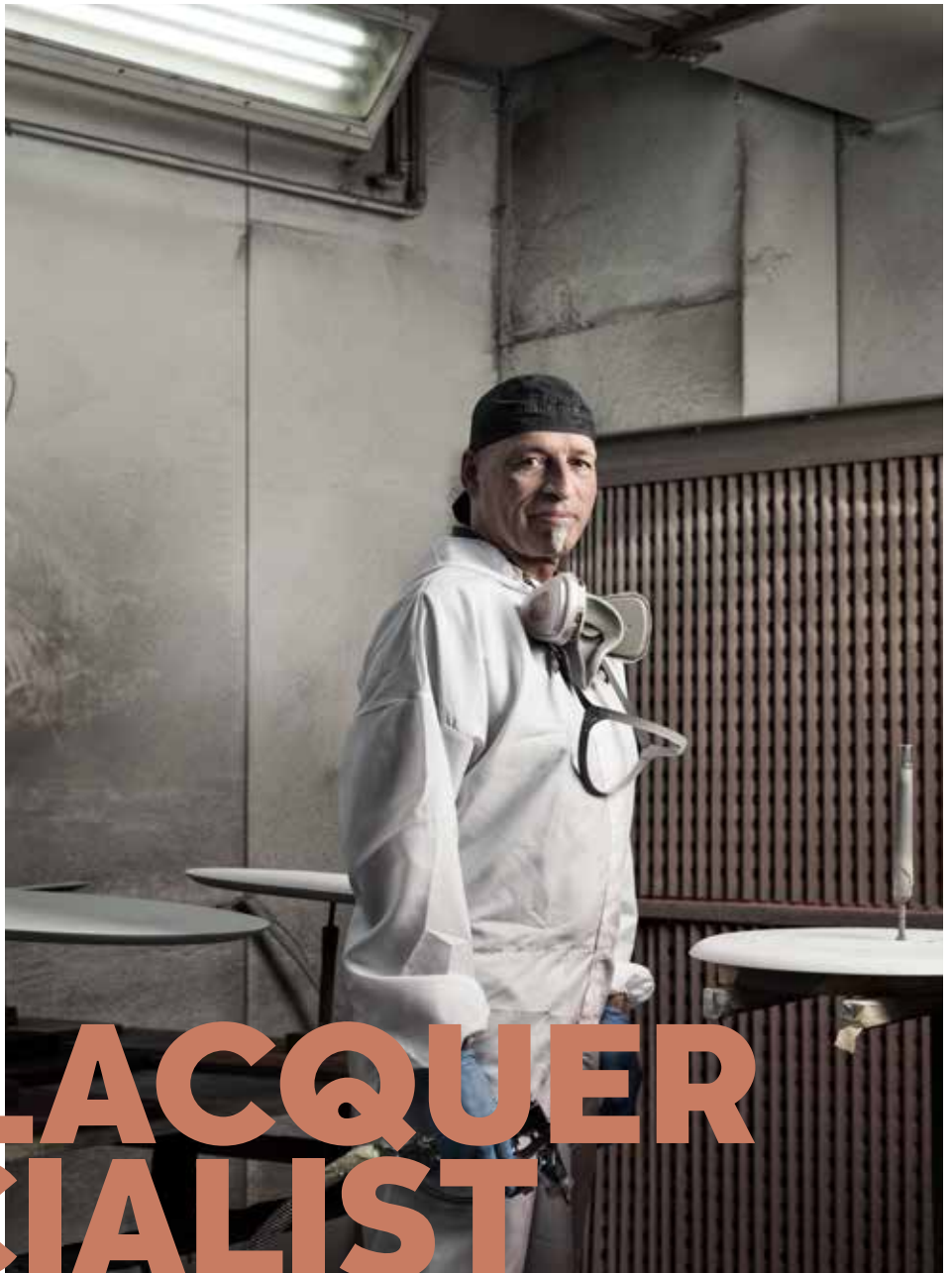


The comfort maker



The upholstery cutter

Together they manufacture a product that meets the highest quality standards. And that's good to know if you like Pode. Because you can see the result of their work straight away, but you only notice it after years of use.



THE LACQUER SPECIALIST





**SHAPED
TO YOUR
STYLE**



Sofa

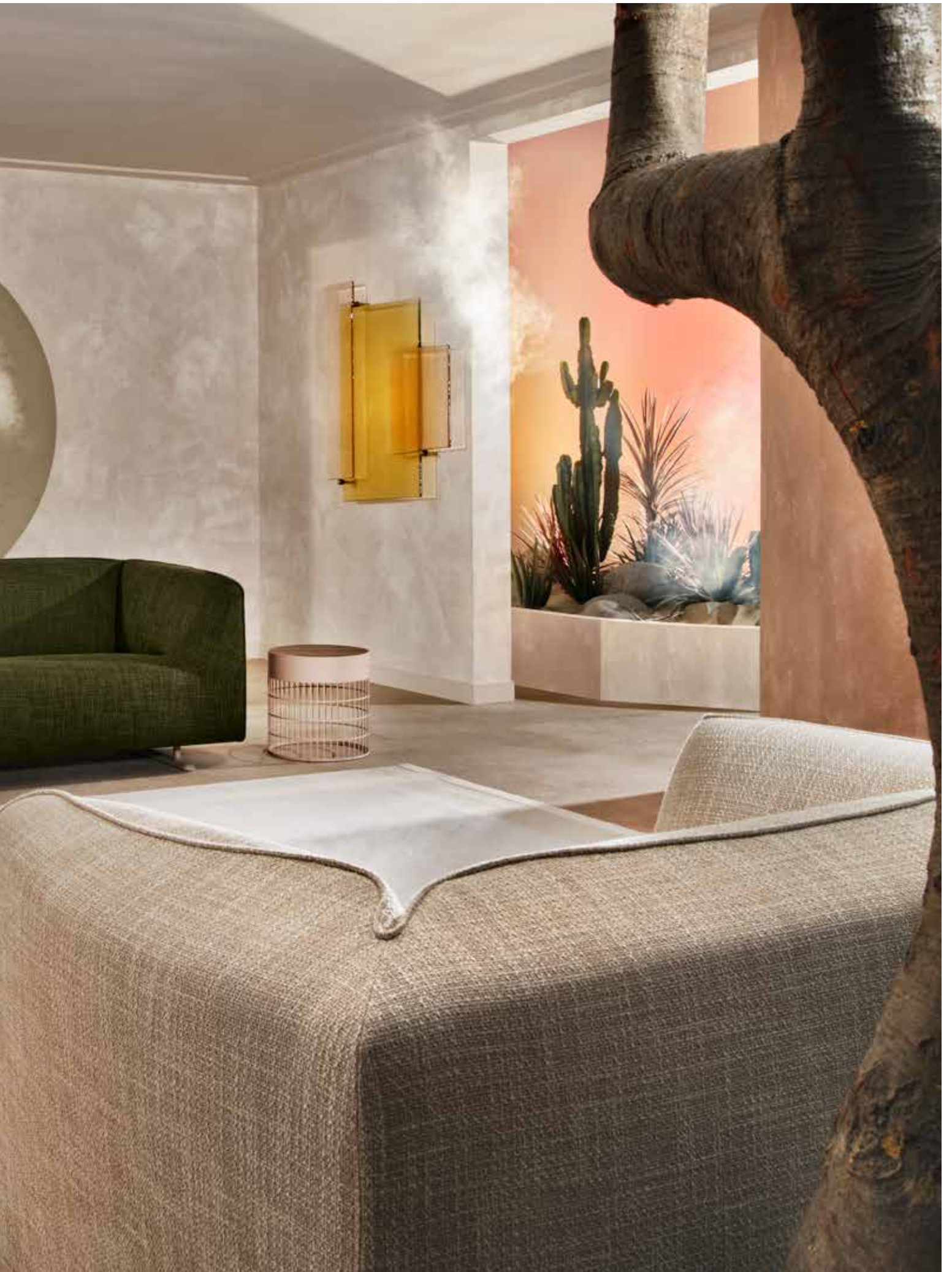
MARV

Design: Roderick Vos, 2021.

Marv is a tuxedo sofa. Elegant and timeless, in which linear and wavy lines converge to form an 'organic cubist', according to designer Roderick Vos. He started with the 'monoblock' and cut away all excess materials. The result is powerful and compact seating with pure lines. Marv is the perfect family sofa that you can place in the centre of the room or against the wall. A sofa of great simplicity that, due to its narrow sledge-style legs, appears to float above the ground.









FEDERICA BIASI

Federica Biasi is an Italian designer, but that description actually doesn't do her justice. After graduating cum laude from Milan's European Institute of Design in 2011, Federica set her sights on the whole world. She also lived in the Netherlands for two years, immersing herself in North European design. She let her wanderlust run wild after that too, on the hunt for new stories and inspiration.

Nature, cultures, materials and traditional crafts; the influences for Federica's work come from everywhere. She often combines handicrafts and tradition to reach innovative solutions and tries to find the optimal balance between her personal

approach and the client's know-how. That strong feeling for teamwork typifies her approach as designer.

Her inquisitive and outspoken nature combined with her working method have done her no harm. Indeed, Federica was crowned as one of the six major up-and-coming Italian talents at the Paris furniture fair Maison et Objet in 2018 and she has worked for leading companies including Nespresso. And in autumn 2021, Federica won the Elle Decoration International Design Award for Young Talent of the Year, which means that she is regarded by all the magazine's international chief editors as being the most promising worldwide design talent. What a perfect addition to the versatile Poda design team.

Chair

CHAP

Design: Federica Biasi, 2021.

Relaxing curves with a dash of retro - that's what Chap has to offer; the ultimate friendly armchair. So friendly with its compact form that fits really easily in pairs within your interior. Because the more chairs, the more joy. And Chap is a friend you like having around.







**OPEN
TO
WHO
YOU ARE**



Design: Raw Color, 2021.

In the Mesh table series, design studio Raw Color plays with the density of colour and material. Open and closed alternate in the perforation grid. This gives the tables an airy look, in which the table top appears to be separate from the base. At the same time, the graphic character of Mesh creates an interesting shadow effect on the floor. The design reflects the Raw Color working method, in which the colour effect of the volume forms the starting point, in this case for the interplay of densities and material combinations.



Table series

MESH

Raw Color's Choice: **Beistelltisch** Mesh Top Lacquer Teal **Base** Lacquer Brick
Coffee table Mesh Top Lacquer Cedat **Base** Lacquer Forest

RAW COLOR



They graduated together from the Design Academy in Eindhoven in 2007 and stayed together from then on both on a personal level and as designers from their home studio base in the Strijp design hotspot in Eindhoven. For Christoph Brach and Daniera ter Haar colour is key, but they're not only involved with product design. Their interest extends much further, from graphic design and photography to textiles, with well-known fabric specialists Kvadrat and Febrik being among their clients.

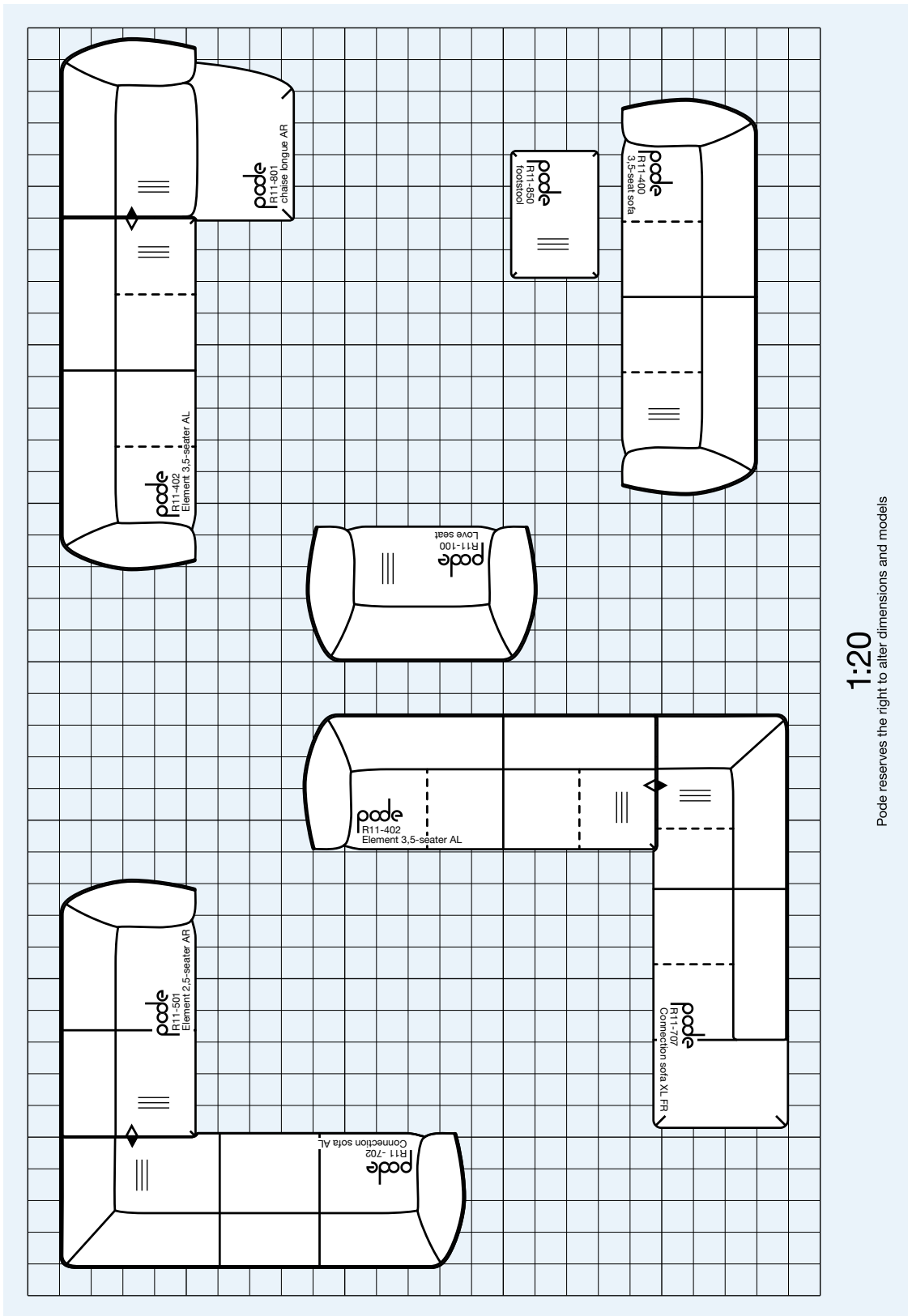
As their company name suggests, colour always plays a key role in their work. Raw Color specialises

in applying colour in design. Their expertise arose from a lifelong fascination for colour. 'We both feel that colour has a huge impact on our daily lives. With that as our starting point, we made it our mission to investigate how using colour can shape people's feelings and experiences.'

The Mesh tables for Pode are part of that mission. These tables are, of course, extremely functional and yes, the production technique of laser-cutting the diamond shapes out of the material makes the tables really stand out, but it's the colour and material options that make the difference. Or, as Christoph and Daniera call it: 'the materialisation of colours'.







1:20

Podé reserves the right to alter dimensions and models

Turia has a huge range of elements in store for you, but we'll start with the freestanding sofas. The most compact is the loveseat. There are also 2.5-seat, 3-seat and 3.5-seat sofa versions. If you prefer to make a nice corner, you can choose from elements in the same sizes, but there's also a standard, 'large' and 'extra large' connection sofa. A chaise longue and a beautiful footstool make everything complete.

Sofa

TURIA

Design: Yonoh, 2020.

A Valencian vision on comfort - that is Turia. It's not without reason that the sofa programme is named after the river that meanders through the city. It is designed by design studio Yonoh and is just as great a place to hang out as Valencia itself. If you look at the design, you see an exciting mix of beautiful, rounded forms and sharp lines. This gives Turia a really personal look, while also being essential for comfort, because the sofa programme has snug corners into which you can comfortably retreat. Put your feet up on the chaise longue and relax - what more could you wish for?







Table series

TRIPOD

Design: Stephan Veit. 2017.

The name only tells half the story. This series of coffee and occasional-tables does indeed have three legs, each with two kinks so that they merge together at a single point. But Tripod is more than that: the industrial base supports a beautifully crafted triangular table-top with gentle curves. And the combinations of different sizes, heights and finishes are also very handy.



Coffee table Tripod 70x72 cm **Colour** Lac Eclipse **Frame** Epoxy Nuit
Coffee table Tripod 88x91 cm **Colour** Oak Nature! **Frame** Epoxy Nuit
Occasional table Tripod 38x39 cm **Colour** Lac Elm **Frame** Lac Elm



RODERICK VOS



With Bibo, Roderick Vos shows his playful side. “This armchair literally wraps its arms around you.”

Viewed from the back, Bibo has a narrow signature. “You just see that clear oval contour,” says designer Roderick Vos. But from the front, the comfortable armchair really broadens out. “It looks as if the armrests want to embrace you. Added to that, the curved armrests straighten out at the ends, so the

armchair looks really inviting, eager to welcome you.” Bibo is defined by three recognisable seating layers, all with roughly the same thickness: the shoulder rest, a backrest and the seat. That gives the armchair a cheerful look. “But the technical realisation was really tricky,” says Vos. “The seat consists of three thin shells that are attached but move separately from each other. A complex construction, but with a wonderful result. Like Roderick himself says: “A good design entices with its beauty but convinces with its comfort.”

Design: Roderick Vos, 2020.

Bibo is unquestionably one of the most charming members of the Pode collection. It welcomes you with open arms and provides you with hours on end of comfortable seating. It is equipped with a solid swivel base with four legs, which looks good as well. And you can choose the exact version you want, just like all our other Pode products. You can opt for leather or fabric in one colour, or maybe you'd prefer your Bibo in a unique combination that fits in perfectly with your interior.



Armchair

BIBO

Armchair Bibo **Upholstery** Rewool 768 **Base** Epoxy Nuit









Design: Susanne de Graef, 2019.

Find your place in Colla and surround yourself with pure Pode design. Colla is a design by the Dutch designer Susanne de Graef and creates an oasis of cosiness in your interior. With delightful corners as a trademark, this sofa is perfect for sharing or for claiming it all for yourself.



Sofa

COLLA

SUSANNE DE GRAEF



With Colla, Susanne de Graef wanted to create a versatile design. Colla is an intimate sofa that radiates a sheltered feeling thanks to its angled collar, while the shape is truly modern and streamlined. “The challenge was to get these different qualities to reinforce each other.”

“I wanted to design a sofa with a sleek, graphic look,” says Susanne de Graef when asked to describe Colla, her first sofa for Poda. “A sofa that

can fill a space on its own. An eye-catcher that unquestionably claims its place wherever it is.” But de Graef isn’t the type of designer that goes in for extravagant decorations and other excesses. “A good piece of furniture can be combined with a table or an armchair in a completely different style. So I tried to show some restraint.” Because these types of discrepancies can easily end up as a half-hearted compromise. But not Colla, which has exactly the right mix of a simple but powerful silhouette and expressive details.

“I didn’t have to make any concessions to my original idea, which was to create a sofa with a versatile look.”

The Colla is a sofa with surprising combinations. In the corners, the fabric is pleated in straight lines. The armrest runs into the backrest in straight but fluent contours. That is why the sofa looks like a tube with decorative angular shapes highlighted by the thick stitched seam. “The original idea for the sofa came about by folding pieces of fabric with a geometric pattern over each other, creating to a three-dimensional shape,” explains de Graef in her studio high up in the Clock Building, one of Eindhoven’s many former Philips factories that have been transformed into a creative hub. In a simple hand movement, she folds the fabric into a three-dimensional sketch in which Colla is immediately recognisable. “This folding technique gives the design its sharp lines.” At the same time, the firm but soft foam filling creates voluptuous curves in the seats. “That gives the sofa a friendly look, almost soft.”

Love seat

Another contrast is that the front is straight while the side and back slope off. “That was one of the big questions: how far can the tube tilt without the sofa losing its natural balance,” says de Graef. “That’s why I kept the legs/feet small, so that the sofa looks even sturdier. This also reinforces the graphic look. It creates a single clear image. Due to the angled shape, the sofa looks like a collar – hence the name Colla.”

You can tuck yourself away in the corners of the sofa. “This is one of the few sofas in which you can

also sit diagonally against the side.” To preserve the distinctive look of an upturned collar, only a 3-seat, a 2.5-seat and a 2-seat sofa are available, complete with a lovely footstool. There is also the love seat, which is perfect for love-birds who want to sit as closely as possible to each other. “My personal favourite is the 2.5-seat sofa, because that’s where the proportions are most in balance. But I also really like the cosiness of the love seat, which embodies the feeling I wanted to convey with the sofa design.”

No concessions

De Graef paid special attention to the fabric. “It needs to be thick and soft. My personal favourites were the Febrik knitted fabrics from Kvadrat. One of the selected fabrics has a graphic pattern that must drape over the sofa in exactly the right way. Fortunately, intricate detailing and finishing is one of the great qualities of Leolux, the furniture producer that launched the Pode brand.” Before Pode even existed, de Graef interned at Leolux while studying at the Eindhoven Design Academy. “My graduation project was manufactured by Leolux, and after that I worked in the development department for almost a year, where I learned so much about the production techniques and possibilities at Leolux. It’s fantastic to work with a brand that has its own factory. During the design phase, I was able to ask the technicians on the work floor about what’s possible and not possible. That meant I was able to realise the best possible design. I didn’t have to make any concessions to my original idea, which was to create a sofa with a versatile look.”





Coffee table

TUBBLE

Design: Roderick Vos, 2018.

The Tubble table series from Roderick Vos is anything but simple and straightforward. The stunning organic leaf shape has a nice, stylish look. If you have two, they are perfect pushed together. Or beneath each other, if you go for two different heights. And, of course, there are numerous material and colour options. For instance, three beautiful shades of marble quartz: Calacatta, Grigio Carnico, Verde Tirreno and Fior Di Pesco. You can also choose solid oak in all Poda wood stain colours or a lacquered version.



YONOH



Spanish design duo Yonoh designs straightforward furniture, often with a single eye-catching detail. In Cabut, that's the extra-large headrest. "Our designs are often clear-cut, even simple. It's the eye-catching details that give furniture its quirky character."

The first thing that catches the eye in the comfortable Cabut is its extra-large headrest. As if the light-hearted and yet slightly traditional

armchair was designed for people with huge heads. For the design, Spanish design studio Yonoh was inspired by the traditional Carnival in its home town of Valencia. During the Carnival, thousands of revellers walk around wearing self-made giant masks, sometimes more than a metre high, as they parade through the streets of the coastal city. "The Valencian word for these masks, or actually for a large head, is cabut," explains Clara del Portillo, who works with Alex Selma at Yonoh.

Design: Yonoh, 2020.

Cabut is the result of our first collaboration with the Spanish designer studio Yonoh. It represents Spanish design without any unnecessary frills. This comfortable and inviting armchair is a classic example of their characteristic designer style: innovative and original, with an unerring eye for detail. One instance of this is the striking piping that continues across the entire design. The armrests are tilted slightly outwards and gently support your arms, while the entire armchair rests firmly on four simple legs.



Armchair

CABUT



“We’re not artists – we just want to give users comfort and freedom of choice.”

It was Yonoh that took the first step in this cooperative venture. “We really wanted to work with Pode. It’s a relatively young label with a fresh look. The style is adventurous and international, but at the same time accessible. And colour plays an important role in the collection. Which is exactly the way we design,” explains Del Portillo. During their first meeting with Pode, they made a very positive first impression, after which they were asked to design a compact chair suitable not just for domestic use but also for hotels and the office environment. But – and this was Pode’s express wish – the chair had to be eye-catching. “It could even actually look heavy. That’s how we arrived at Cabut, a magnified head on a slender body.”

The full life

The headrest not only covers the entire width but also runs through to the armrest. The actual backrest runs from the armrest to the seat, so it is relatively small. There are four slender legs/feet under the chunky seat. “The cushions are filled with cold foam and are relatively light. The chair is low, so despite its solid look it is also compact and easy to move.” This means that Cabut has four eye-catching elements: the chunky seat, a narrow but high armrest, a modest backrest and, of course, the enormous headrest that defines the contour. “We always try to give our furniture at least one striking element,” says Selma.

Yonoh was founded in 2006 in Valencia, where the duo studied and still have a studio. They have a broad-based portfolio that includes house styles, exhibition stands and numerous consumer items. “But,” admits Selma, “interiors are closest to our hearts. It’s where we eat and spend time with our

loved ones but also where we work more and more often. It’s where the full life takes place, you could say. With furniture, we give substance to that life. It’s why many of our designs have a friendly and generous look. They fit in a modern interior but also in interiors with a more classical style. We’re not artists – we just want to give the people who use our furniture comfort and freedom of choice.”

Striking details

Just as the Valencianos create their own masks, consumers can also create their own Cabut. “There’s a choice of fabric and leather. As well as that, the back can be designed in different materials or colours.” And to accentuate the front and back, there is thick piping running over the armchair. Selma: “These types of details are very important for a design. Our designs are often clear-cut, even simple. It’s the eye-catching details that give furniture its quirky character.”

The duo, whose relationship is purely professional, are perfectly attuned to each other. “I’m more analytical and I’m also the face seen by the outside world,” says Del Portillo. “Alex is more the crazy mind that focuses purely on the creative process.” To illustrate this, Selma leafs through a leather booklet filled page after page with drawings of chairs, cabinets, beds and even complete interiors. “We don’t really like working with computers. All our designs start with a sketch.” On some pages there are just very rough drafts, while others have detailed designs of sofas and cabinet systems. “We have plenty of ideas for Pode. We prefer to work with a producer for longer so that we can learn from each other.”

Design: Roderick Vos, 2016.

Roderick Vos: "With this design, I was aiming to create a sturdy family sofa, a sofa for young and old. Design to be enjoyed. In every sense of the word. This innovative and timeless sofa was created by folding the upholstery fabric and cutting it as little as possible. Hence its name: Fold. I have a preference for comfortable cushion sofas, but for this design I actually avoided the image of 'loose cushions', giving rise to a lovely abstract sofa with no excessive details."

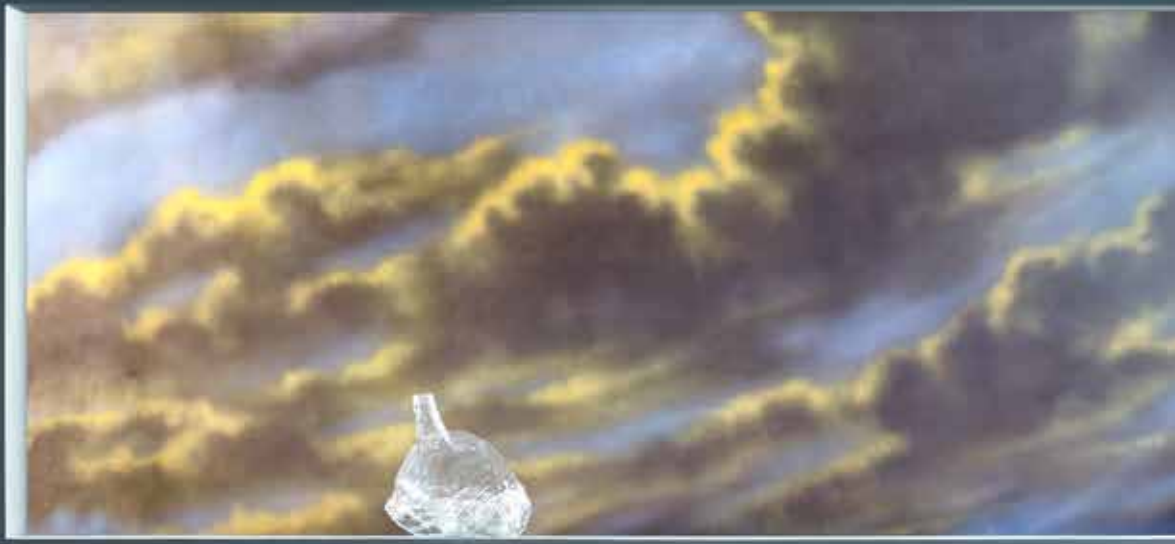


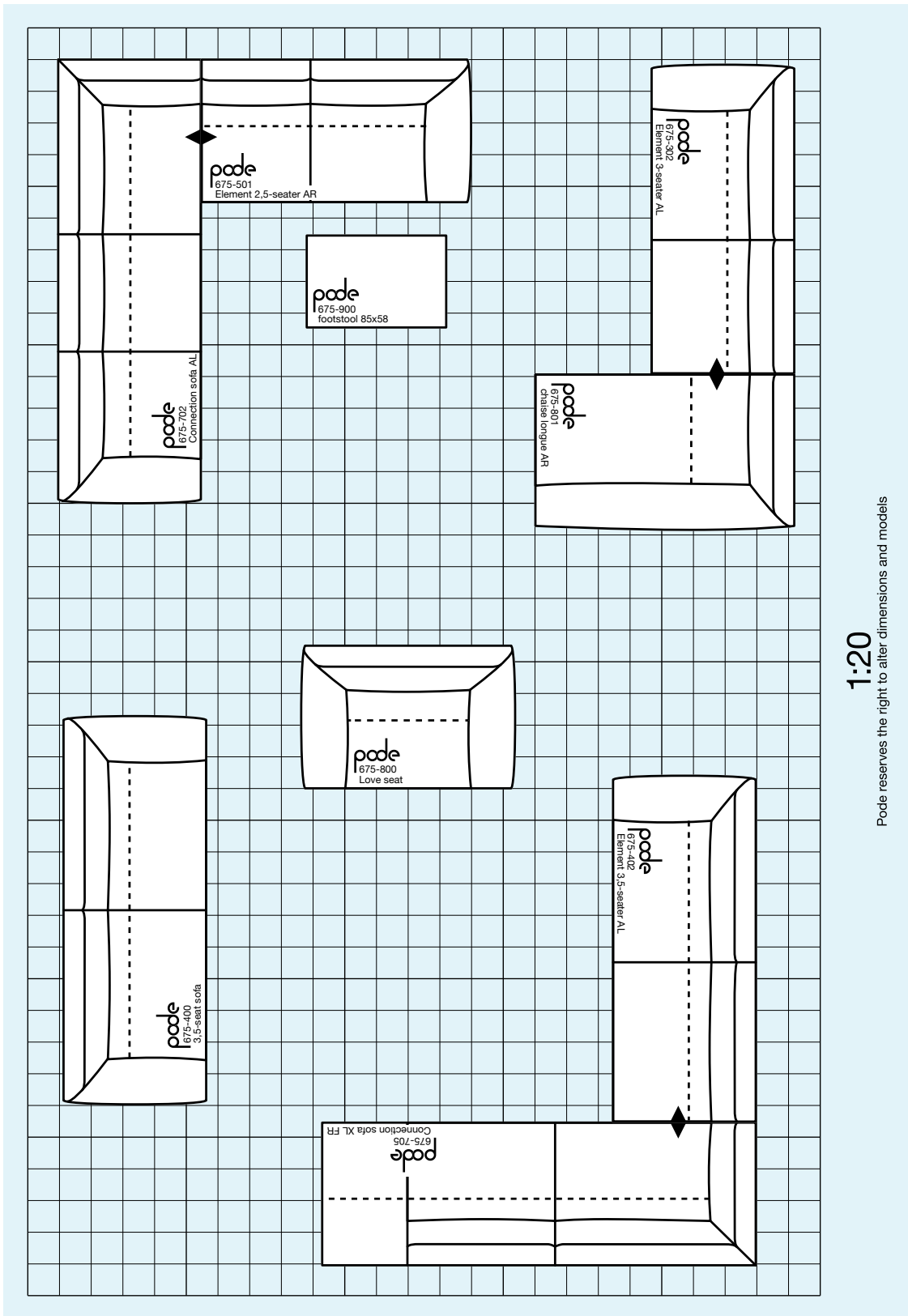
Sofa

FOLD









1:20

Podé reserves the right to alter dimensions and models

Fold offers many possibilities. There are various sofas, from a loveseat to a generous 3.5-seater. And if you choose a modular sofa, the most beautiful combinations unfold. From even larger sofas to spacious corner configurations, complete with a footstool or chaise longue.

Sofa programme

FOLD





Armchair

SPARKLE

Design: Thijs Smeets. 2014.

A splendid swivel armchair with a strong retro look: Sparkle. By varying the colours of the body, the seat cushion, the swivel base and the decorative stitches, you can create audacious combinations. Colour-to-colour or vividly contrasting. The high Sparkle TWO version gives the design a sense of grandeur and offers even more comfort than the existing low version.



Armchair

SPOT

Design: Thijs Smeets. 2019.

Spot gives you a wonderful family feeling, just like so many other Pode products. This is even more the case with this beautiful swivel chair, especially, because Spot is a full cousin of our Sparkle. Despite the clearly recognisable family lines drawn by Thijs Smeets, Spot is unique. The seat has fixed upholstery, for example, without a loose cushion, giving it a very different look.





kvadrat KNITWEAR



Extensive knitwear options.

Stretch fabrics are extremely versatile. Strong and colourful, with a comfortable stretch when you sit down. For designers they offer fantastic possibilities for organic shapes. Introducing Mosaic and Plecto, two knitted stretch series from Kvadrat, both 'Made in Holland'. One has soft embossed cushions, the other a dynamic colour accent.



Design: Kranen/Gille, 2017.

The Bottle Stool designed by Kranen/Gille was a huge success from the moment it was introduced. It's a winebottle holder, a stool and a cheese plank all rolled into one, but above all it's a table that can't help but attract everybody's attention.

The Bottle Stool is handy and mobile because the 'ring' that holds the winebottle can also be used as a handgrip. Jos Kranen and Johannes Gille have managed to combine an impressive number of functions in one design.



Occasional table

BOTTLE STOOL



KRANEN/ GILLE

Jos Kranen and Johannes Gille know each other from the Design Academy in Eindhoven. They graduated in 2004 in the heyday of the academy, when it was all about progress and innovation. Three years later, they set up the Kranen/Gille design studio in 's-Hertogenbosch. For Pode, they conceived the Bottle Stool.

"We both have a fascination for shapes in nature: a shell, a flower, or a leaf. Very inspiring. But sometimes the inspiration is closer to home. The idea for the Pode

Bottle Stool was born at home. As a lover of a good wine, you quickly discover that you need some kind of coffee table. However, coffee tables are often big and rather static. With the Bottle Stool, we made the table top a little longer so that a bottle of wine can rest exactly on the point of the base. And at the same time, you also have space for two glasses. So it's actually three things in one: a Occasional table, a stool and a wine holder. It's super-functional: it takes up very little space and it's very easy to move around."



Design: Pascal Bosetti, 2017.

Nihan is wonderfully laid back: it's an armchair you can really relax in. And have you already discovered the inventive details? The stylish joint between the back and frame, which conceals all the fastening materials. And the frame itself; it's not as simple as it looks either, with its subtle curves that perfectly match the fluid shape of the seat and the back.



Chair

NIHAN







JET DIRCKS

Jet Dircks is the only designer who works at Pode on a permanent basis. However, she does much more than design. She selects other designers, gives briefings, maintains contacts, and gives feedback during the design process. It was she who designed the Edit and the Insert.

"The Edit is a very sober minimalistic which is comfortable and which is selling well. And if you need something bigger, you can expand it with the

help of the Insert programme. That way, you get a lounge corner in one go.

I do enjoy designing, make no mistake, but detecting trends and steering young talent in that direction is really fascinating. I come from an entrepreneurial family, so the independence of this position really suits me. Where my most important inspiration comes from? Haha, from deep inside me, from my intuition. And it's usually correct."

Sofa

EDIT

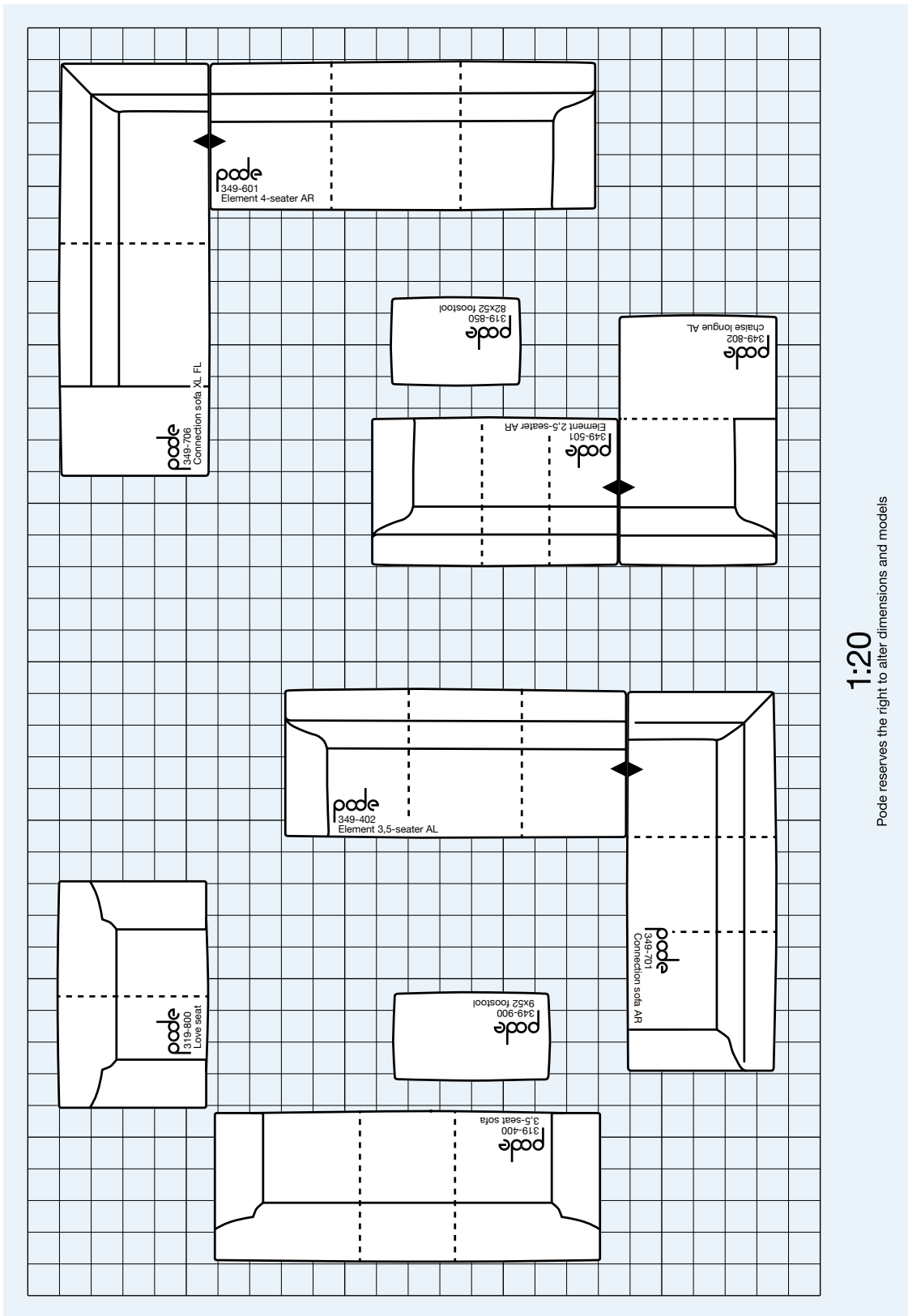
Design: Jet Dircks, 2008.

Super in fabric, fantastic in leather! Or a combination of fabric with leather piping. The sleek Edit design sofa fits everywhere, even in the most functional interior. With a little bit of colour, Edit is suddenly transformed. Also available with matching ottoman.









1:20

Pode reserves the right to alter dimensions and models

With a wide choice of elements, you create exactly the configuration that transforms your living room into a wonderful lounge area.

You can also adapt the Insert base to your wishes with Needle or Basiq legs in multiple colours. It all depends on which touch you want to give Insert.

Sofa programme
INSERT



Table series

OVA

Design: Meike Harde, 2020.

The understated table series Ova takes stylish design enthusiasts on a voyage of discovery. Because the longer you look at it, the more you see the beautiful details that Cologne designer Meike Harde has added to her design. For instance, each table has two different types of legs. This asymmetry gives Ova a really special look.





MEIKE HARDE

Meike Harde has already been nominated no less than twice as “Best Newcomer” for the renowned German Design Award. The work of the talented designer, who founded her own design studio in Cologne in 2013, ranges from textiles and lighting to decorative materials and furniture. Perhaps that is why it is not so easy to pigeonhole her work.

Nevertheless, there are many points of reference, she says: 'I am very precise in everything I do in

my work. With my technical understanding and my love of natural materials, I design products that are visually light and cleverly constructed'. The results are playful products with a poetic character. 'I find it very interesting to approach existing production techniques in a different way and to put ordinary materials in a new context'. Through this experimental approach to the design profession, she succeeds in developing a new design language that perfectly matches Pode's ideas.





Design: Meike Harde, 2020.

Unda is officially designated as a footstool. But in practice this Meike Harde design offers much more than just a place to rest your feet. The Unda's strong internal construction means you can also use it as an additional and comfortable seat. The footstool is finished with a thick layer of high-quality foam especially for this, so that you can experience true Podde comfort. For the upholstery, you can choose from all fabrics and leathers in our collection.

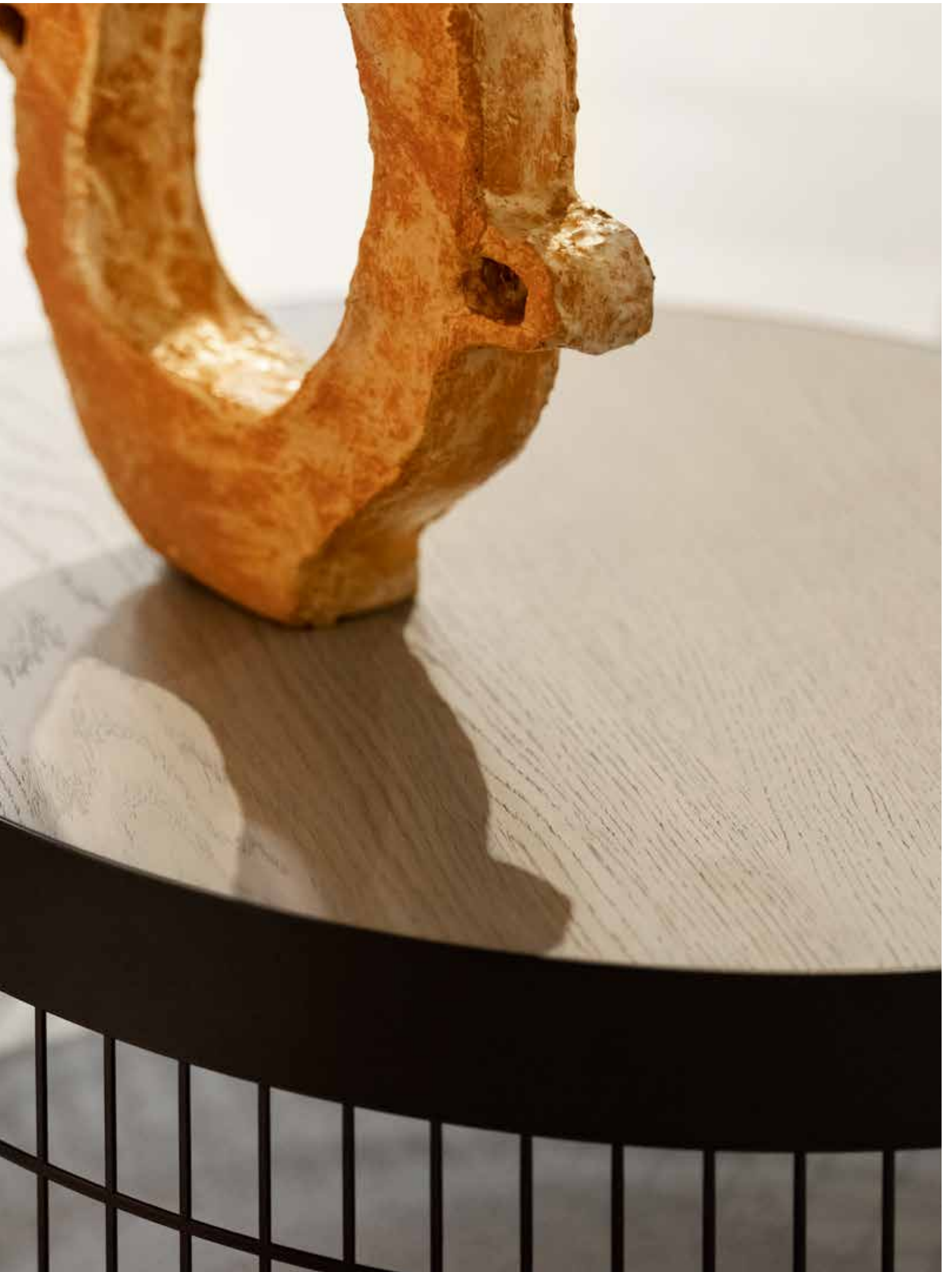


Footstool

UNDA

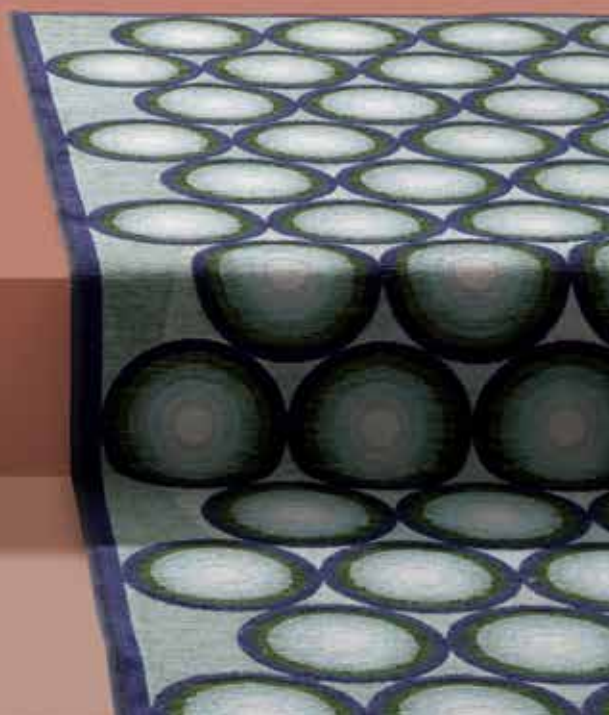
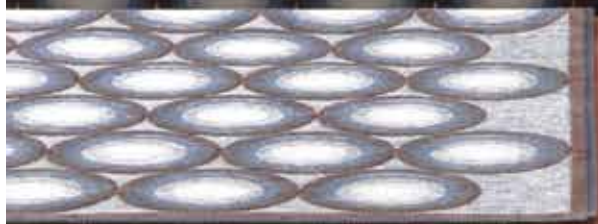
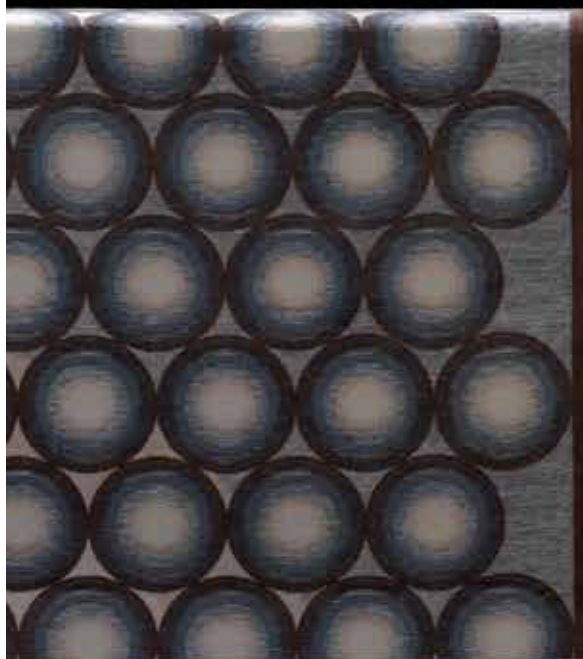
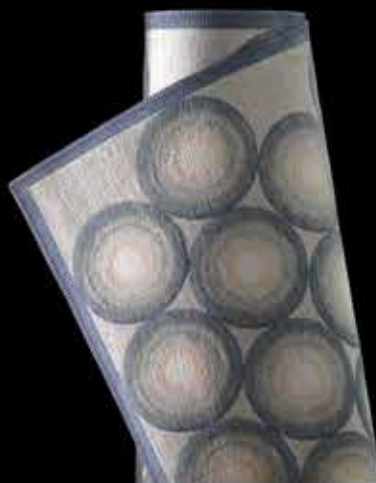






Design: Claire Vos, 2018.

Take some wonderful cotton chenille, a beautiful tuft of wool and a huge dose of 70s retro. These are just the right components for Punto; an enchanting rug, designed by Claire Vos. Punto pampers you with an abundance of circles that together form a beautiful composition. The ideal foundation for a living room full of stylish ambience.



Rug

PUNTO

CLAIRE VOS



Claire Vos's passion for textile is in her blood. 'My family has been involved in producing textiles and ceramics for generations,' she said. 'And that's something you can't ignore. I was basically destined to become a textile designer.' Claire has an impeccable focus on quality and detail in her work. She is a precise designer with a natural passion for colours, forms and weaving techniques. She's also skilled in reinterpreting traditional techniques and using these as inspiration for new designs. An ikat weave or a Dutch folklore pattern can, for instance, be a source of inspiration. But the end result is always really graphic and timeless.

In her work at Studio Roderick Vos, Claire is attracted to many different aspects of the craft. She has an immense interest in emotion, fashion and colour, but is also really fascinated by the industrial factor: 'We are always working together on ideas, methods and opinions, and never create work in cultural isolation. That's why we operate as a progressive design agency that is efficient, open-minded, energetic and fun.'

According to husband Roderick, Claire has 'an absurd memory for colours and images' and she is unbelievably strong in the two-dimensional side of her design; something that's also clearly visible in the Pode collection. From the sophisticated colour and structural features of the upholstery to the rich and versatile collection of accessories and rugs as well as, of course, the distinctive look of the photography.

Cushions

CORD

Design: Studio KZ15, 2020.

With Cord it's easy to add a comfortable cushion to your interior that's a perfect match for all your other Pode products. You can actually order these cushions in all upholstery fabrics from our collection. There are three different sizes, 60 cm x 50 cm, 60 cm x 40 cm and 80 cm x 30 cm. The elongated size of the latter cushion makes it ideal for use as a lower back cushion. For an additional accent, you can also choose another fabric or contrasting colour for the Cord's wonderfully thick piping.



Design: Claire Vos, 2020.

With Nastro, Claire Vos created a wonderful addition to the Pode rug collection. The sleek lines give the impression that a folded ribbon is incorporated into the rug. Hence the name, because Nastro means ribbon in Italian. Moreover, each design surface has a different structure and emphasis, which gives Nastro an interesting depth.



Rug

NASTRO

Design: Maghalie Doods, 2018.

The Rye rug series is Belgian designer Maghalie Doods' first design for PODE. Each rug is handwoven from a combination of wool and cotton. You can choose from five different colours and four sizes, so you can be certain that there's always a Rye rug that is a perfect match for your style and room.

Rug

RYE

Cushions

HAZE

Design: Claire Vos, 2016.

Thanks to the stitching technique, the plastic mould applied under the fabric creates a subtle detail. It's an old production method that produces a slightly quilted feeling. In combination with the unusual corner pleat, the Haze evokes the soft feeling of morning mist.



Cushions

PUFF

Design: Claire Vos, 2017.

Puff is the ideal accessory if you need to recharge your battery. A real drape-it-anywhere cushion that you can comfortably nestle in. Nice and big, nice and soft, and the perfect company. Casually finished with generous strips of fabric along the sides for even more grip.



Design: Claire Vos, 2016.

It's time for glamour, warmth and style. With this Swell series, which is Art Deco inspired, every sofa is transformed into an inviting and attractive place to relax. The jacquard fibres are characterised by strong dynamic lines made up of geometric patterns, such as circles and vertical lines. Combined bright colours or indeed warm deep tones such as mustard, turquoise, and red tints set the tone.



Plaid

SWELL

Plaid Swell Cream White **Size** 150x200

Design: Claire Vos. 2018.

Abstract is a versatile Claire Vos cushion with a stylish interaction between different types of upholstery fabrics. The large piece of velvet and the contrasting piping alternate with a delicate fabric made mainly from wool. It is the ultimate in chic.



Cushions

ABSTRACT





Sofa

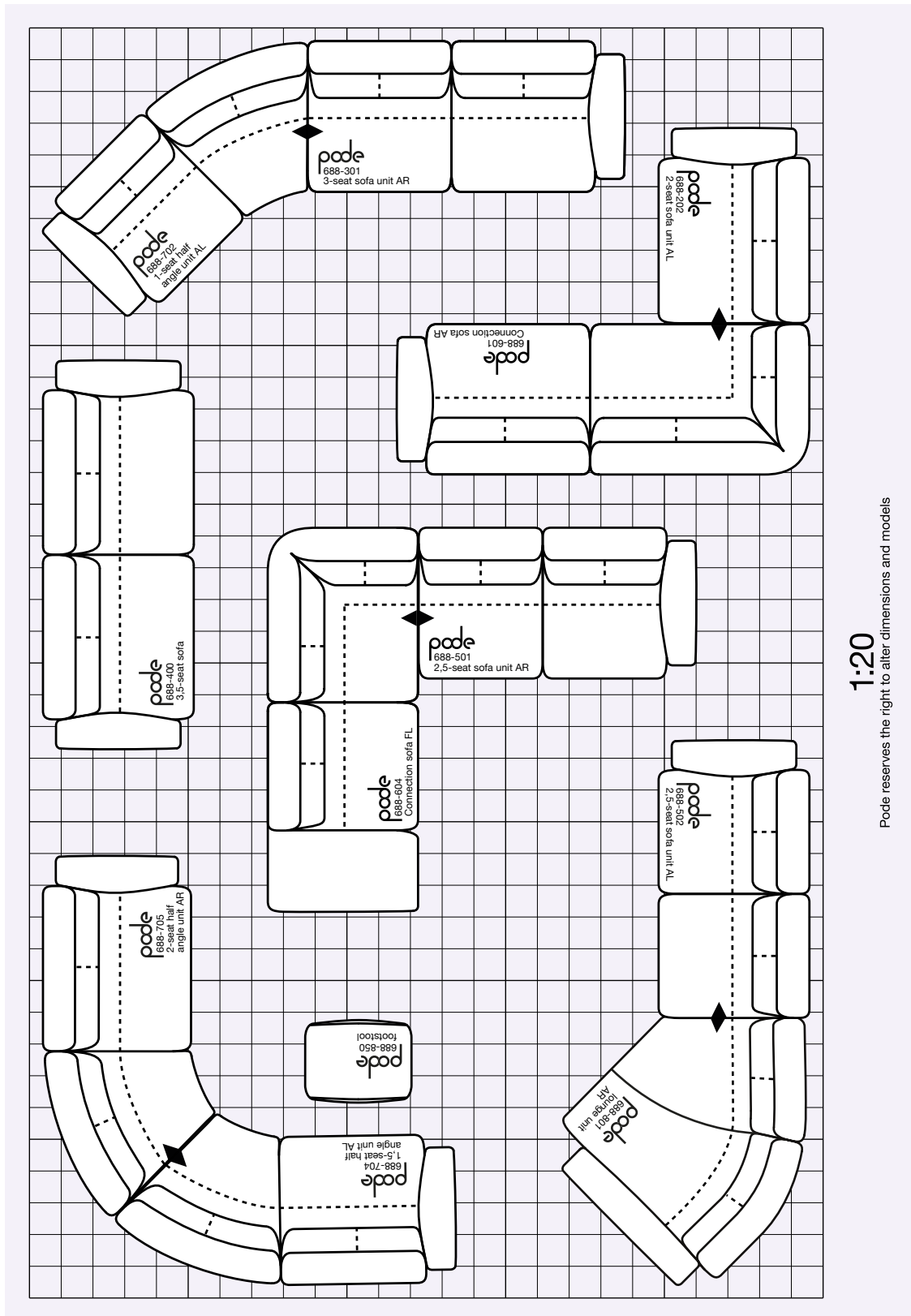
MELLOO

Design: Roderick Vos, 2017.

The world of Melloo revolves around you. With many sofas, elements and a matching footstool, you can compile this friendly and inviting Roderick Vos design exactly as you want it. The modular sofa programme challenges you to give your creativity free rein. Melloo is unique thanks to the round corner unit that you can use to build your own comfortable Melloo landscape. And of course, you can also select right-angled corners. Add a lounge element so that you can relax at full stretch, or extra seating elements so that friends and family can enjoy the sofa with you. Melloo is the most complete range in our collection, with all the use options you need for your interior.







1:20

Pode reserves the right to alter dimensions and models

The boldness of the details

One fascinating detail is the way the Melloo elements always connect to each other with one leg. That creates an impression of calmness rather than a forest of legs. And when you're happy with your configuration, you can choose the ideal upholstery from our collection. You can also add an extra personal detail by designing the flat piping along the edges in a different material: fabric, leather, vibrant or subtle. Or you can choose an extra Melloo-cushion – needless to say, in your favourite material. That way, you create a sofa that truly belongs to you: say hello to Melloo.

Design: Roderick Vos, 2017.

Unique of the Melloo modular system are the circular corner elements which enable you to create your own comfortable Melloo landscape. Add a lounge element, or additional seating elements to create more space for your guests. Melloo is the largest series in our collection which offers all imaginable configurations for your interior.



Sofa programme

MELLOO

Armchair

TRANSIT

Design: Roderick Vos. 2016.

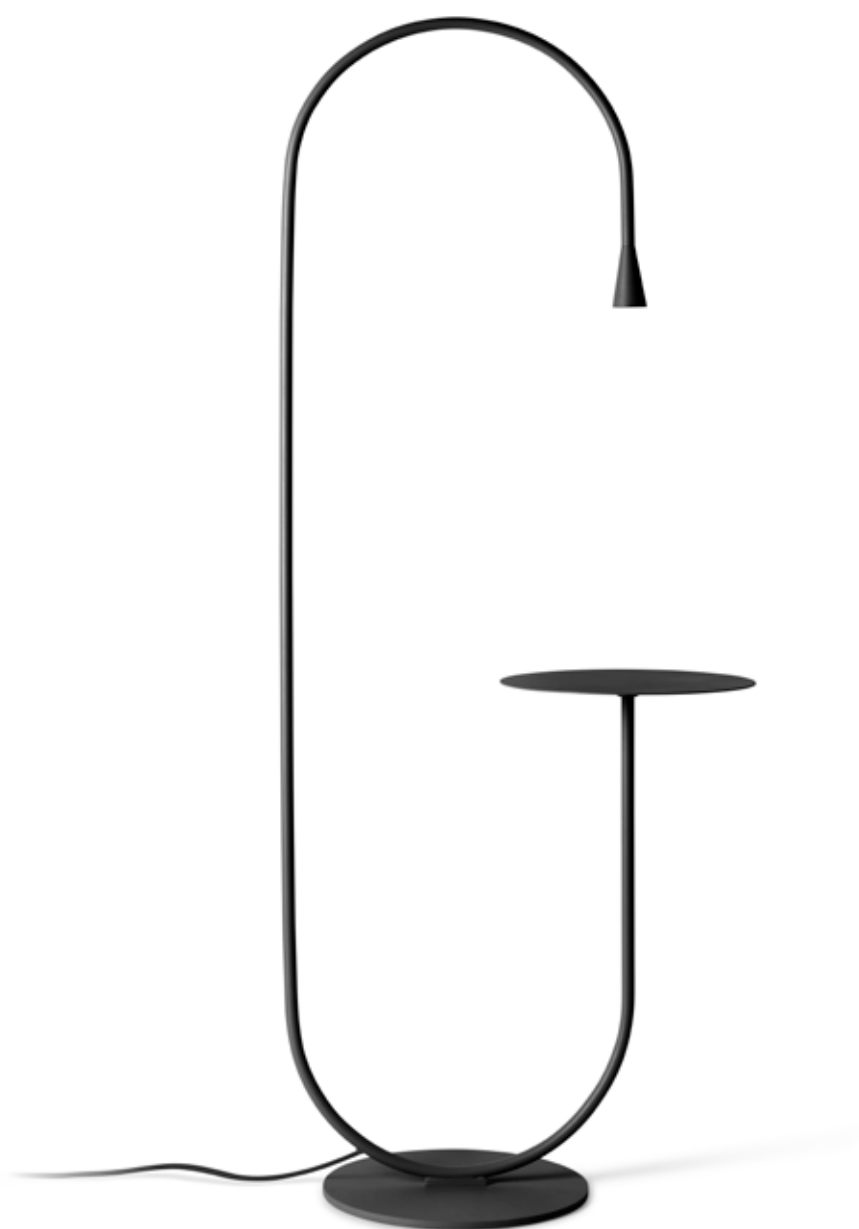
Sometimes, sitting down feels almost too good. In the Transit armchair, designer Roderick Vos subtly combines shape and comfort. With sleek lines, a floating seat and legs made of curved pipe material, but above all casual, loose upholstery. Transit is available with a high or low back, a choice that influences both the appearance and the degree of comfort. Whatever suits you best. And do you know what also looks fantastic? Two armchairs beside each other. The perfect picture!





Design: Michael Raasch, 2018.

Has a lamp ever bowed deeply to you? Well, Uturn does. The royal bow in this striking light connects a table-top with a subtle spotlight. Ideal for highlighting a nice souvenir or any other treasured item. Only available with euro plug.



Lamp

UTURN

MICHAEL RAASCH



As a designer of furniture, lighting and accessories, German designer Michael Raasch earned his spurs long ago, but he is still fascinated by the design process. You start with nothing, just an idea or a problem. And as the process progresses, something emerges that wasn't there before, something which is shaped purely by the creativity required to resolve the challenges between form, function and technique. That's always exciting.

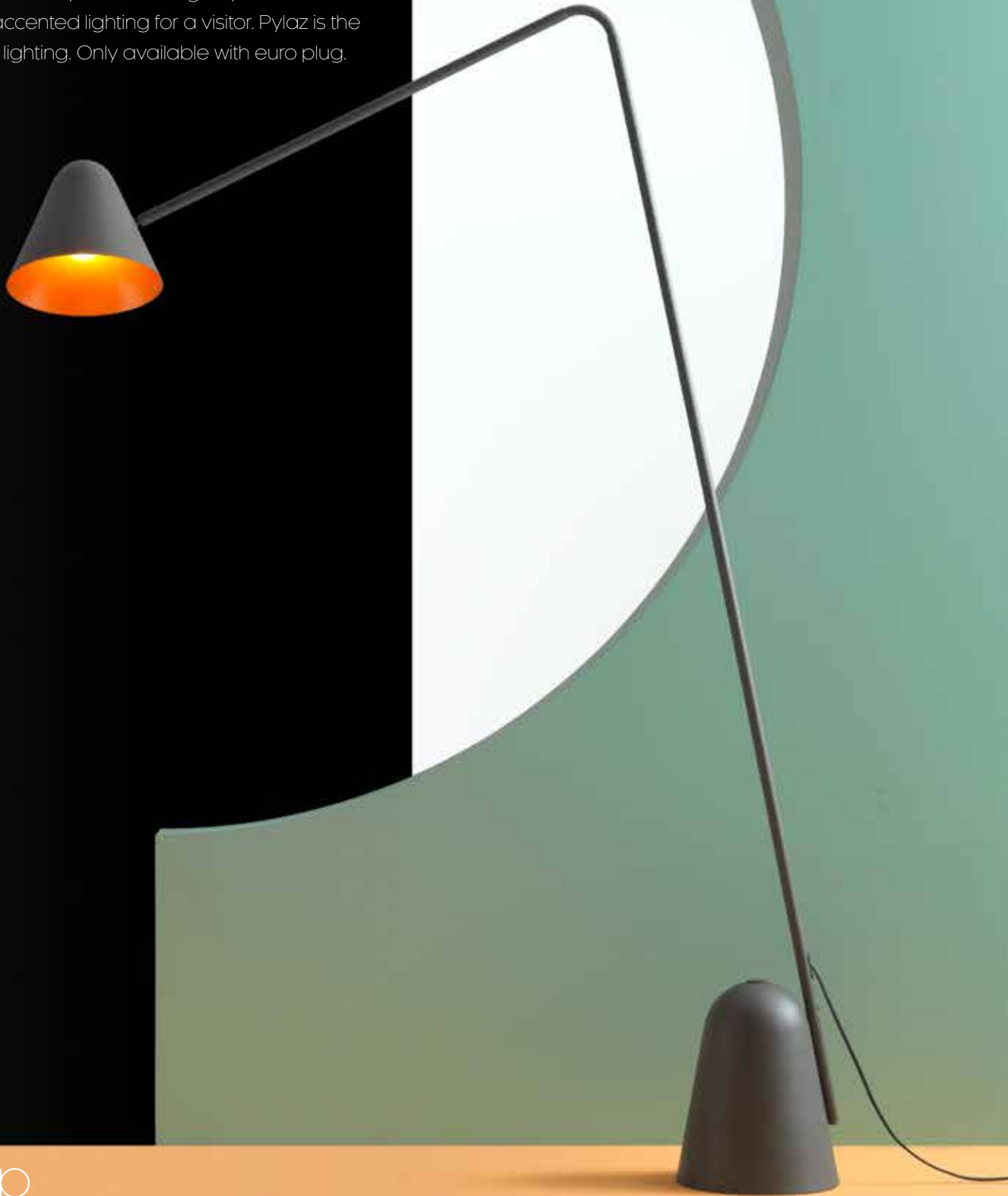
When designing lighting, you come up against a special challenge, says Raasch. Because you're not just designing the lamp which has to look good as

a 'sculpture', but also the light itself. In addition, floor lamps have two functions. Because even when the lamp is switched off, its design still continues to be an element in the interior. It has to enhance the space. That makes designing lighting a specialism in itself.

According to Raasch, all his designs are based on a simple philosophy: his search for the 'essential'. He combines the core function of a product with surprisingly simple solutions and a clear design language, which reappears in different designs. Particularly when designing several products within one collection, he looks for the overarching unity of all the designs.

Design: Michael Raasch, 2019.

Pylaz is a personal butler light. With the flexible frame and the option to turn and tilt the shade, Pylaz makes it easy to provide lighting exactly where you want, whether you're reading or you need additional accented lighting for a visitor. Pylaz is the ideal mood lighting. Only available with euro plug.



Lamp

PYLAZ

Design: Michael Raasch, 2019.

If you don't want simple, direct lighting, Osun is the perfect lamp for your interior. Because it has three separate rings that together bathe your living room – or any other room – with a very pleasant light. And you'll be glad to hear that Osun is supplied with a dimmer as standard. That way, you can set exactly the amount of light you want – from a soft shine to a giant ring of fire.

Lamp **OSUN**

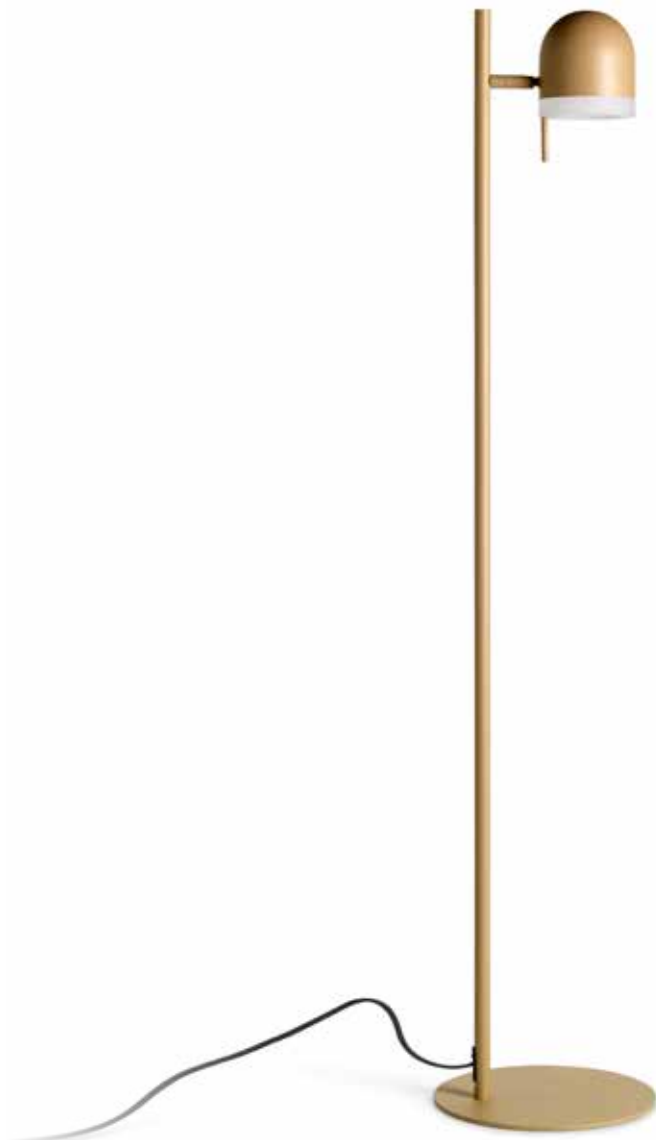


Lamp

POM

Design: Michael Raasch, 2018.

Pom provides you with vibrant light at any moment. If you want to lose yourself in a book in the dark hours, for example. But also if you have a dark corner in your living room, where you wish to create a stylish light source. Pom stands alone on a lovely firm base. You can turn and tilt the shade to direct the light wherever you want it. Only available with euro plug.





FIND YOUR STYLE IN THE PODE COLLECTION





ARMCHAIRS

BIBO
Roderick Vos



CABUT
Yonoh



Chap
Federica Biasi



NIHAN
Pascal Bosetti



SPARKLE One
Thijs Smeets



SPARKLE Two
Thijs Smeets



SPOT One
Thijs Smeets



SPOT Two
Thijs Smeets



TRANSIT One
Roderick Vos



TRANSIT Two
Roderick Vos



SOFAS

COLLA
Suzanne de Graef



EDIT / INSERT
Jet Dircks



FOLD
Roderick Vos



MARV
Roderick Vos



MELLOO
Roderick Vos



TURIA
Yonoh



TABLES

BOTTLE STOOL
Kranen/Gille



MESH
Raw Color



OVA
Meike Harde



TRIPOD
Stephan Veit



TUBBLE
Roderick Vos



LIGHTING

OSUN
Michael Raasch



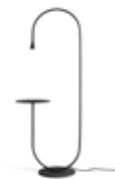
POM
Michael Raasch



PYLAZ
Michael Raasch



UTURN
Michael Raasch



MAKE YOURSELF AT HOME

ASSECORIES

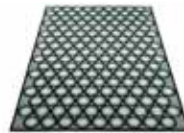
MACKAY
Claire Vos



NASTRO
Claire Vos



PUNTO
Claire Vos



RYE
Maghalie Dooms



UNDA
Meike Harde



SWELL
Claire Vos



CUSHIONS

ABSTRACT
Claire Vos



CORD
Studio KZ15



HAZE
Claire Vos



PUFF
Claire Vos



TAB
Studio KZ15



FABRICS

The upholstery that you choose for your furniture will be part of your interior for many years. Poda offers a broad selection of woven materials to cover the sofas and armchairs to your liking. Smooth and coarser fabrics in contemporary colours that perfectly match our leather and lacquer colours. Poda works with high-quality fabrics from renowned suppliers. Well-known brands such as Kvadrat and De Ploeg and various Italian top weavers, selected for you by Poda.

Is your colour not included our standard collection? The fabrics, Strand, Maple, Divina MD, Tonica, Strand, Hallingdal 65 and Steelcut Trio provide countless extra colours for an additional charge. On request and for an additional charge, we also supply additional quality fabrics from suppliers such as Kvadrat, De Ploeg, Rohi and Alcantara. You can find a complete overview of these fabrics on our website.

Balance (not available in all international markets)

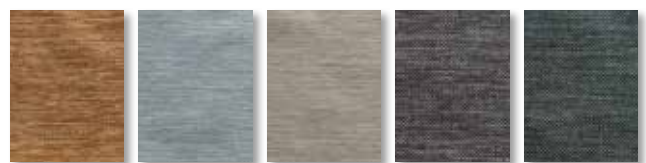


Ice Cube Com Carrot Wine Kiwi

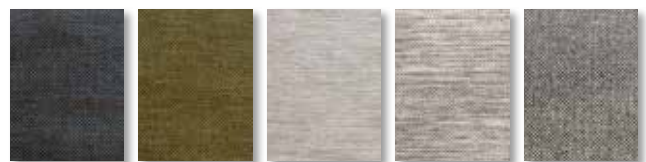


Rice Cream Bean Black-berry

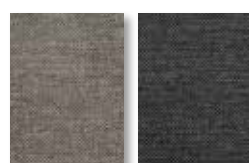
Beams (not available in all international markets)



Tundra Wave Shore Steppe Pine



Meso Canola Arctic Lunar Graphic



Urban Taiga

Essential



Nimbus Paloma Frost Anthracite Egret

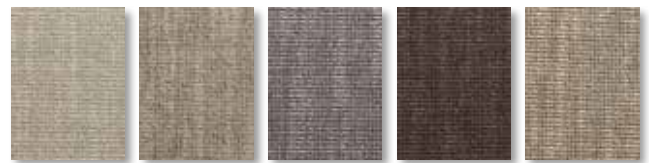


Peyote Sedona Aragon Allure Saragossa

Fay (not available in all international markets)

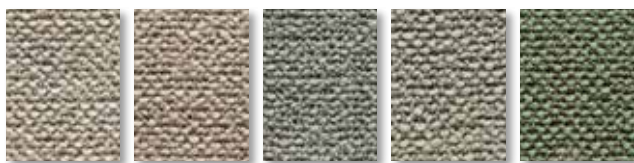


Sterling Surf Sea Ocean Abyss



Oyster Rock Steel Iron Dune

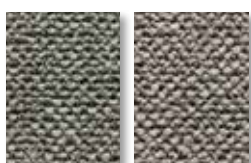
Fresco (not available in all international markets)



Pearl Orchid Ice Seagrass Celadon

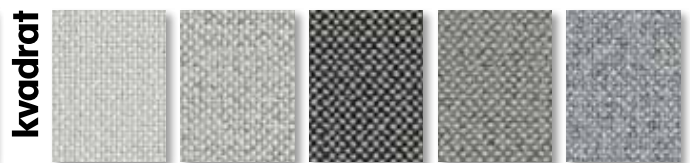


Titanium Shadow Auburn Rattan Tobacco

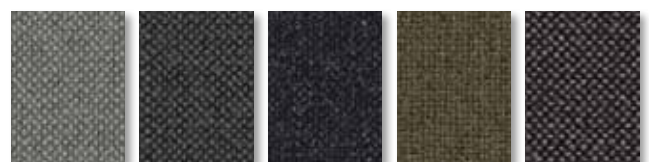


Silver Almond

Hallingdal



103 110 126 116 130



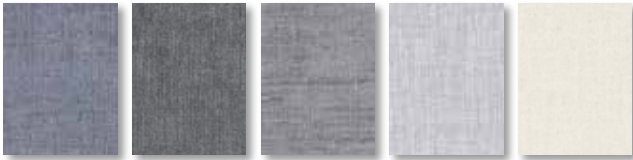
153 173 180 227 368



687 764

Maple

kvadrat

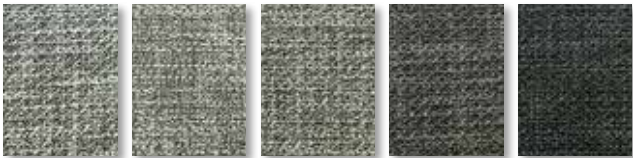


792 192 172 722 212



332 392

Migo (not available in all international markets)



MOUNT HEATH CAPITAN TORNADO CASCADE



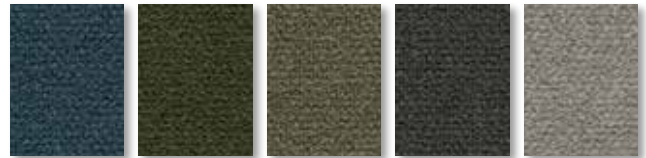
BAY CACTUS Sun-flower CANYON BEACH



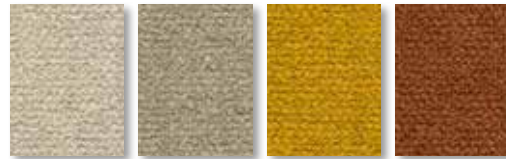
RAIN SCALLOP

Monza

de ploeg:



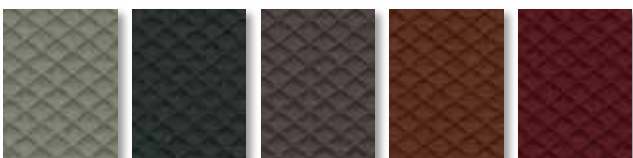
45 55 58 84 08



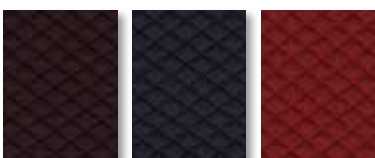
00 09 66 27

Mosaic

kvadrat



922 972 262 472 662

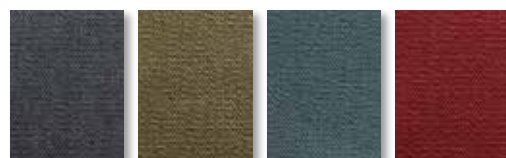


682 692 924

Nomad (not available in all international markets)

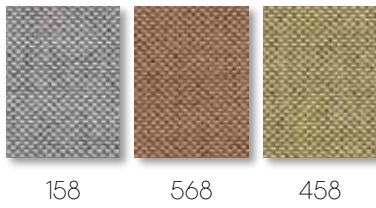
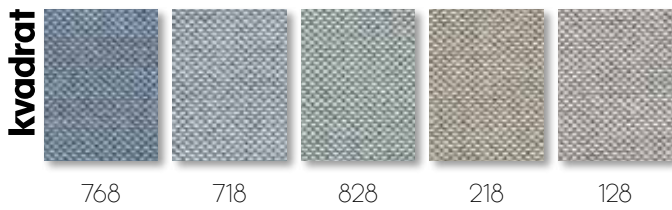


Fog Nougat Cloud Steel Peat

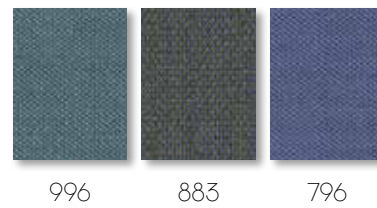
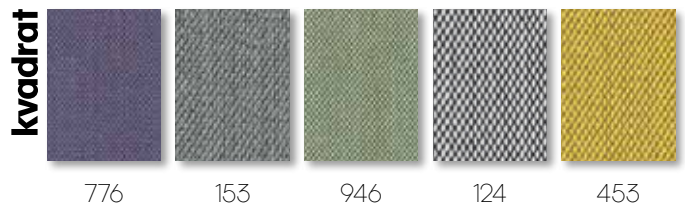


Indigo Moss Lead Ruby

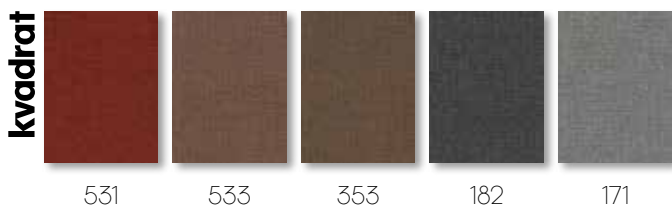
Re-Wool



Steelcut Trio



Tonica



Tweed (not available in all international markets)





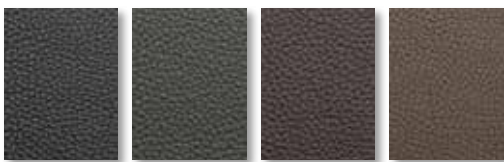
LEATHER

Leather is wonderful upholstery material. At Pode, you can choose between three high-quality basic variants of cowhide, which we then use to cover your favourite item of Pode furniture in the colour of your choice:

- Fusion leather is available in beautiful colours. The thickness and finishing of the material gives it a unique character and a high user value, even when you use it intensively.

- Perle is a soft, grained, brilliantly coloured leather, which even so is suitable for daily use. To achieve this result, during the finishing process, the hides undergo a special process that gives the leather a strong and somewhat matt top layer.
- The lightly sanded Neron leather gives your Pode furniture a pure and natural look. It is real natural leather, so it becomes part of your life and grows more beautiful the more you use it. Neron is available in lovely colours.

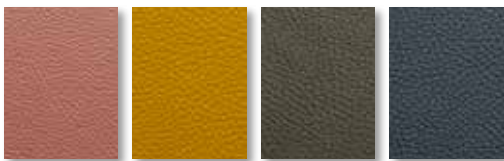
Fusion



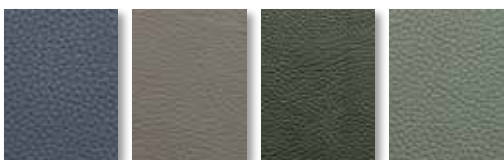
Bean Truffle Brownie Toffee



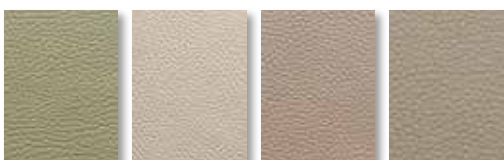
Chile Goji Garnet Salsito



Blush Honey Cucumber Grape

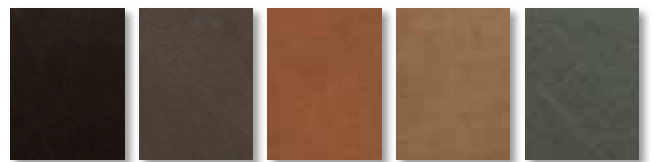


RaspberryMushroom Bois Thyme

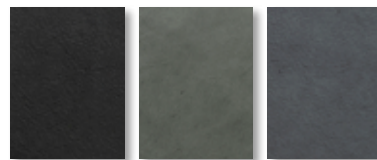


Fennel Flour Shiitake Potato

Neron

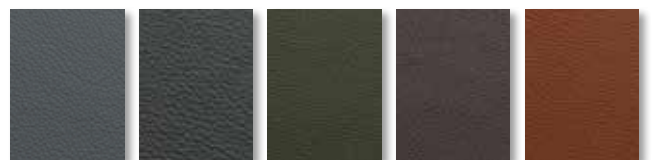


Cocoa Vanilla Cinnamon Brown Sugar Sage



Cumin Chia Sesame

Perle



Suit Spruce Moss Saddle Rustic



Medal Cloud Cobble Gris

OTHER MATERIALS

The perfect finishing is created when all colours in a collection are coordinated with each other. At Pòde, we focus on all the finer details: Lacquer colours,

epoxy (varnish), decorative seams and wood colours blend in with the upholstery or create a spicy contrast. Choose what suits you best!

Lacquer

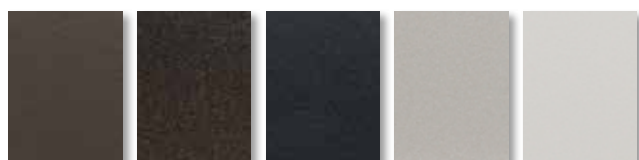


Eclips Teal Forest Brick Saffron Black Carbon Taupe White Sea Salt

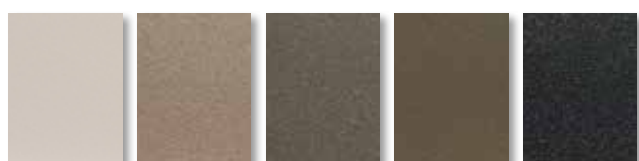


Rose Dust Cedar Clay Elm Pale Aqua Opal Raffia

Epoxy



Taupe Nuit Lava Anodic Cotton



Shell Alpaca Lead Khaki Raven

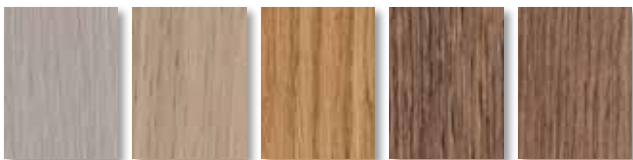


Ceramic



Retro-stone Concrete Riverstone Basalt Glacier White

Wood Oak



Bright White White Naturel Hazel Aragon



Nougat Shadow Pinegrey Night

Marble quartz



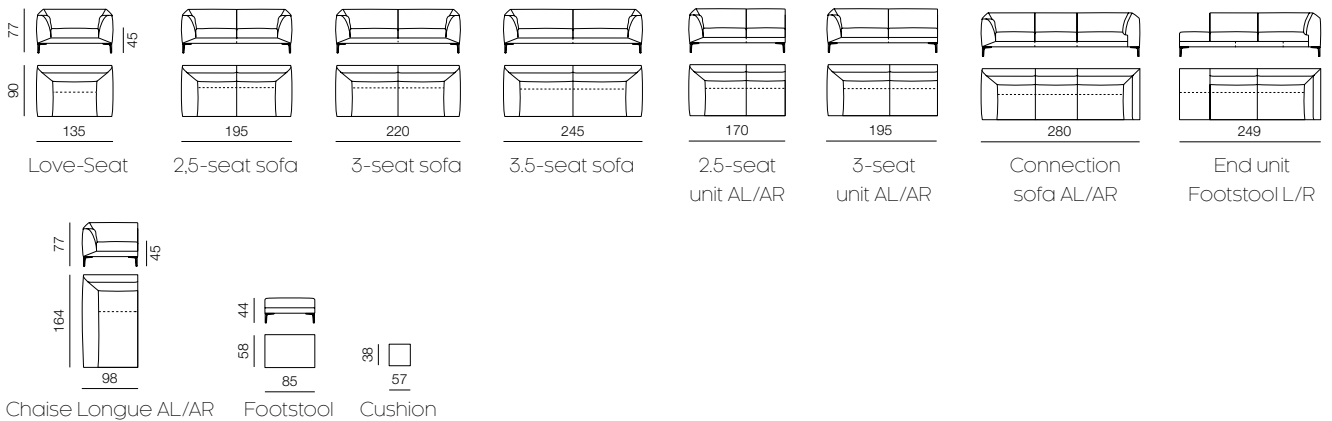
Calacatta Grigio Carnico Fior di Pesco Verde Tirreno



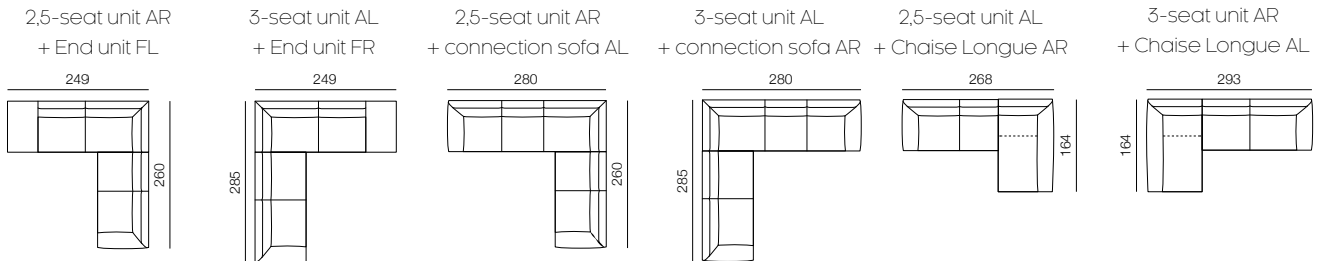
DIMENSIONS

SOFA PROGRAMMES

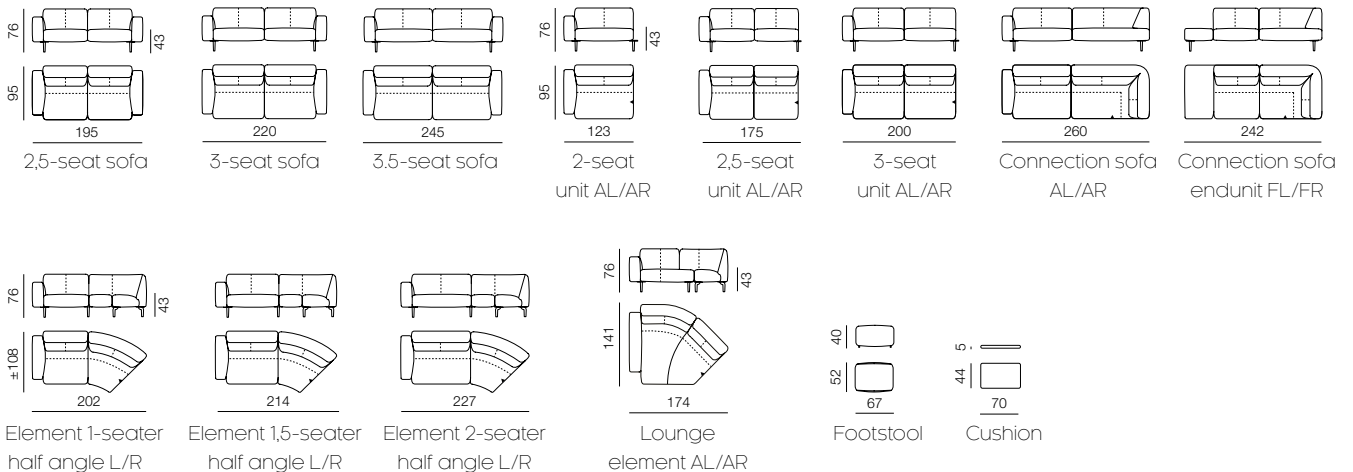
Fold



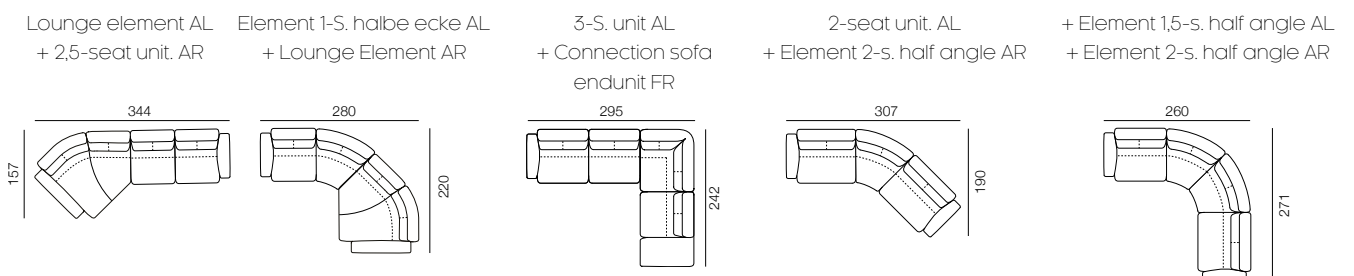
EXAMPLES:



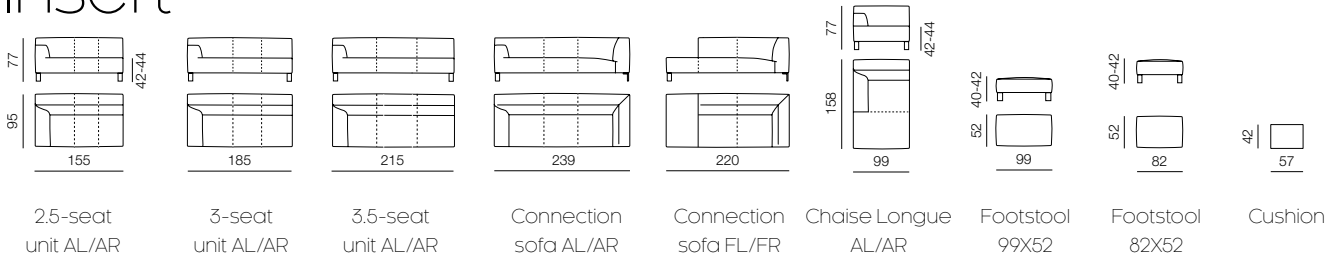
Melloo



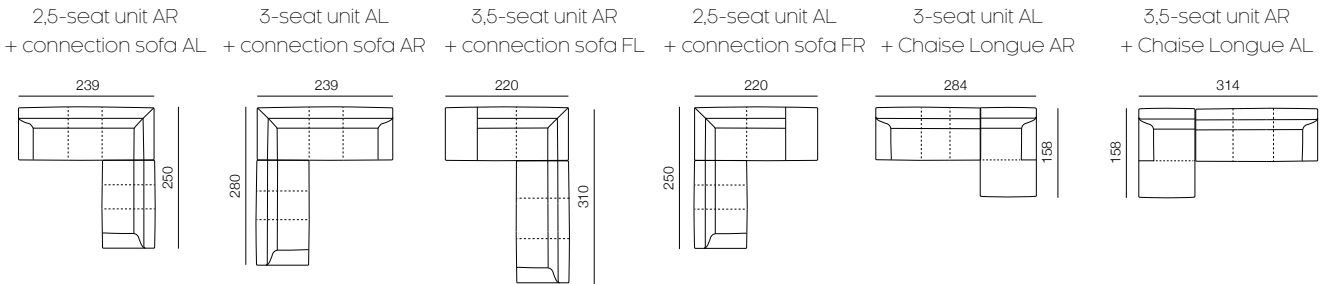
EXAMPLES:



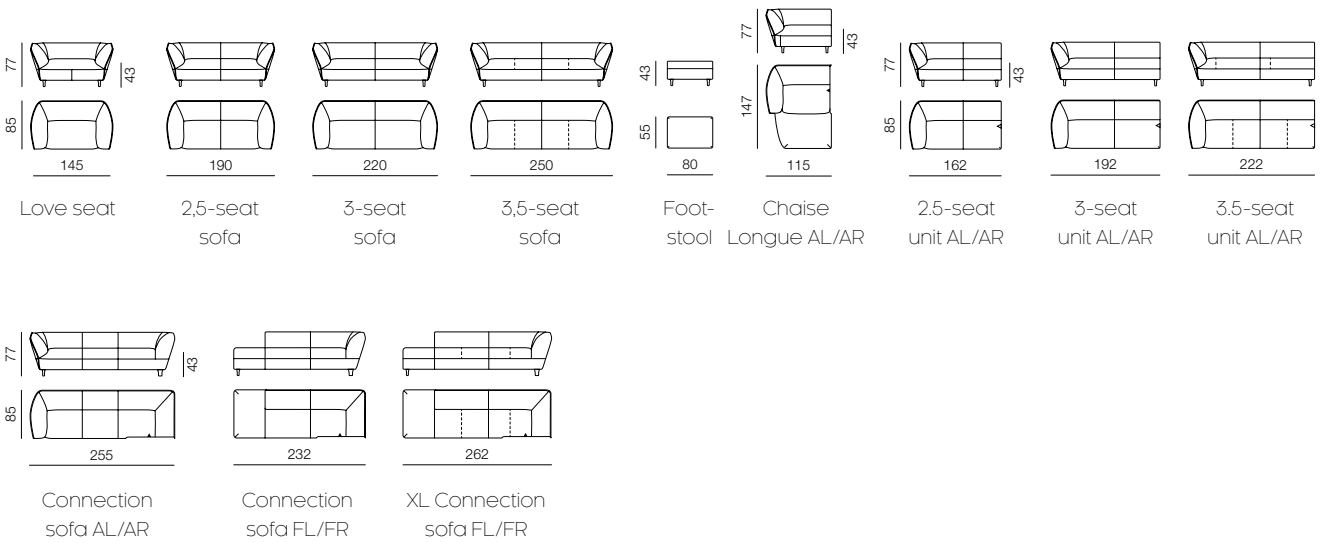
Insert



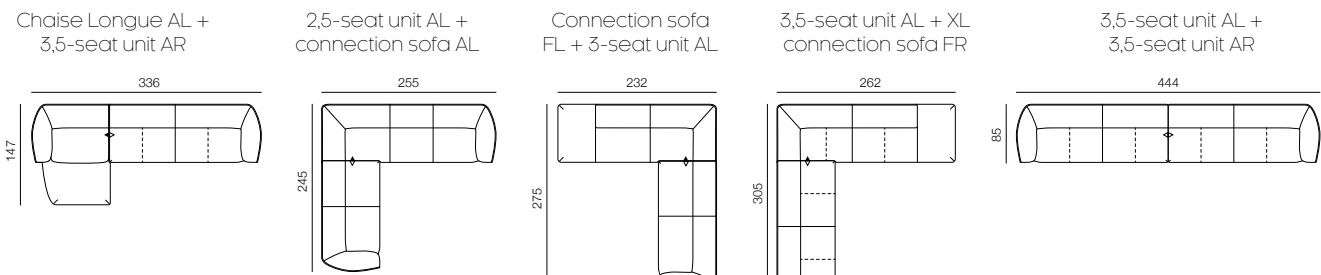
EXAMPLES:



Turia

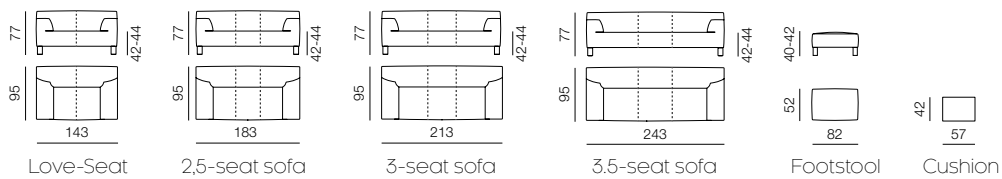


EXAMPLES:

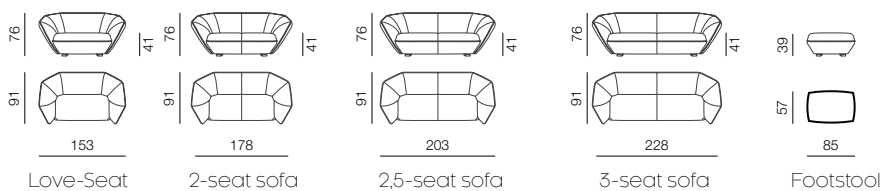


SOFAS

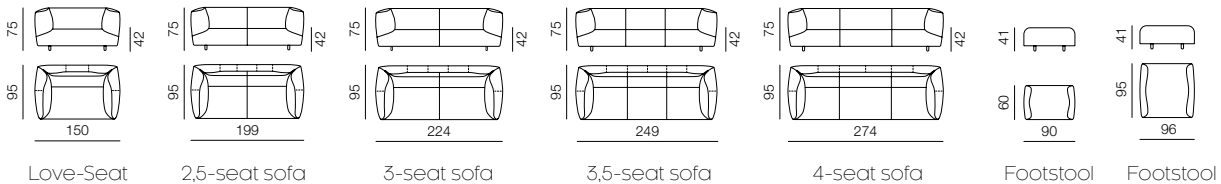
Edit



Colla



Marv

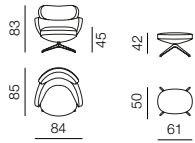






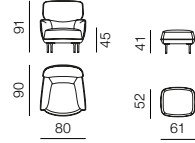
ARMCHAIRS

Bibo



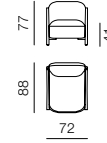
Armchair Footstool

Cabut



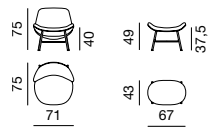
Armchair Footstool

Chap



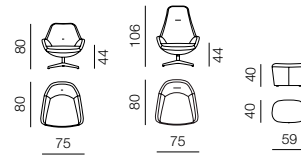
Armchair

Nihan



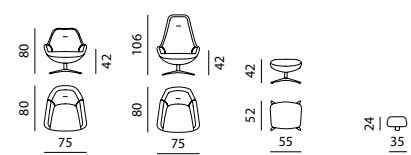
Armchair Footstool

Sparkle



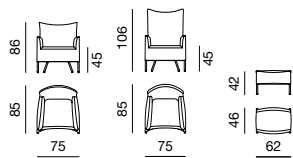
Armchair One low
Armchair Two high
Footstool

Spot



Armchair One low
Armchair Two high
Footstool
Head cushion

Transit



Armchair low
Armchair high
Footstool

COFFEE & OCCASIONAL TABLES

Bottle Stool



Occasional table

Mesh

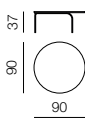


Occasional table



Coffee table

Ova



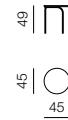
Coffee table



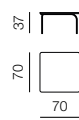
Coffee table



Occasional table



Occasional table

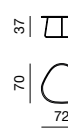


Coffee table

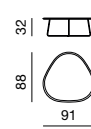
Tripod



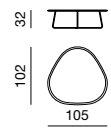
Occasional table



Coffee table

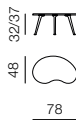


Coffee table

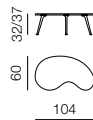


Coffee table

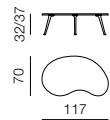
Tubble



Coffee table Small



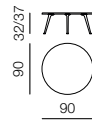
Coffee table Medium



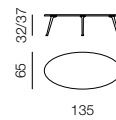
Coffee table Large



Coffee table



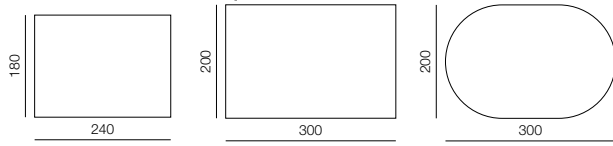
Coffee table



Coffee table

RUGS

Mackay

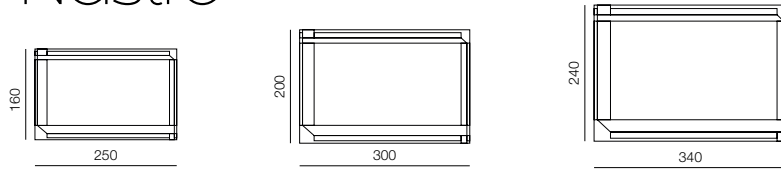


Rug
Medium

Rug
Large

Rug
Oval

Nastro

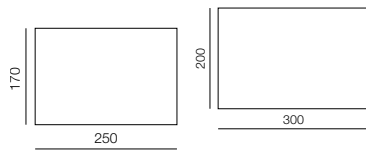


Rug

Rug

Rug

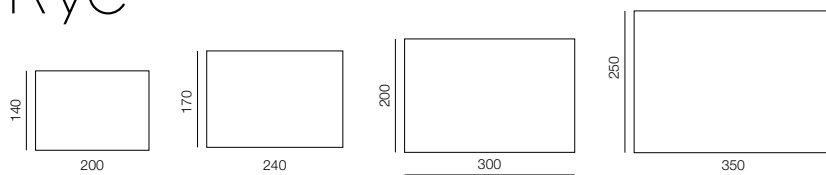
Punto



Rug

Rug

Rye



Rug

Rug

Rug

Rug

LIGHTING

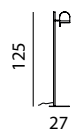
(lighting only available with euro and UK plug)

Uturn

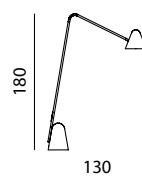


Lamp

Pom



Pylaz



Lamp

Osun



Lamp

ACCESSOIRES

Abstract



Cushion
60x28 cm

Cord



Cushion
60x40 cm



Cushion
60x50 cm



Cushion
80x30 cm

Haze



Cushion
48x30 cm



Cushion
50x45 cm



Cushion
76x30 cm

Tab



Cushion
60x40 cm

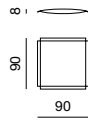


Cushion
60x50 cm



Cushion
80x30 cm

Puff



Cushion
90x90 cm

Unda

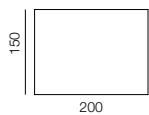


Footstool
65x65 cm



Footstool
80x80 cm

Swell



Plaid
150x200 cm





SERVICE & GUARANTEE

We deliver our products in good condition. Needless to say, our follow-up service extends much further. A top brand such as Pode naturally has an outstanding service and guarantee scheme.

What do we do?

Pode delivers perfect products and we want to keep it that way. If, despite the great care that we take, anything should go wrong in the first 2 years, a 100% guarantee scheme applies.

Visit www.pode.eu. The full guarantee scheme is displayed there.

What can you do yourself?

All upholstery, both fabric and leather, comes from top suppliers. And everything has been extensively tested for strength and colour fastness. So it lasts a really long time. But you too can contribute to this by taking good care of the upholstery. You can find some handy tips on www.pode.eu.

COLOPHON

This magazine is a Pode publication
(collection 2022)

Chief editors: Hans Filippini | Claire Vos

Art Direction: Studio Roderick Vos

Design: Peer Coopmans | Claire Vos

Text: Ben Salden | Antal Németh | Jeroen Junte

Photography: Benning Gladkova Photography Assistent photography Tim Posthumus

Make-up: Esther Goldstein | Alexandra Borcila

Styling and production: Kamer 465 | Judith Rasenberg

Art Direction photography: Studio Roderick Vos | assistent Julia Jacobs

Image editing: Benning Gladkova Photography | Zebra Fotostudio's | Peer Coopmans

Portrait photography: Hugo Thomassen | Benning Gladkova Photography

Product photography: Zebra Fotostudio's | Peer Coopmans

With thanks:

www.kvadrat.dk | www.nlx.com | www.forbo.com | www.cor-unum.com | www.mimaki.com | www.debijenkorf.nl | www.stories.com | www.cosstores.com | www.chloe.com | www.uniqlo.com

www.solidnature.com | www.serax.com | www.studiorens.com | www.willemvhooff.com | arnohoogland.com | De Ploeg | www.musett.design | Jewellery: www.cristelball.com | Glass art: www.dawnbendick.squarespace.com

Models:

William van Esveld | Micky van Esveld | Laura Hoek | Kilian Vos | Marthe Vos | Julia Jacobs | Sarah Neutkens | Michiel van Maaren | Jorinde Kirsten | Nini van der Waals | Ofri Geertjes | Fieke Klerx | Mathijs te Kieft

Kazernestraat 15 · 5928 NL Venlo · The Netherlands · Tel. +31 (0)77-3877222 (Mon to Fri from 8.30 a.m. to 5 p.m.)
Email: info@pode.eu · www.pode.eu



pode

For a complete dealer overview visit www.pode.eu
Pode is part of the Leolux Furniture Group