

COMPOSIZIONE: 37% LINO 63% COTONE
COMPOSITION: 37% FLAX 63% COTTON
COMPOSITION: 37% LIN 63% COTON
ZUSAMMENSTELLUNG: 37% LEIN 63% BAUMWOLLE
COMPOSICION: 37% LINO 63% ALGODON



Vale

Cat. 20

Vale

Cat. 20



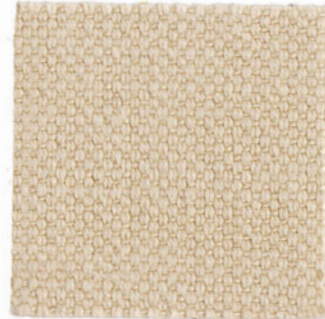
24805



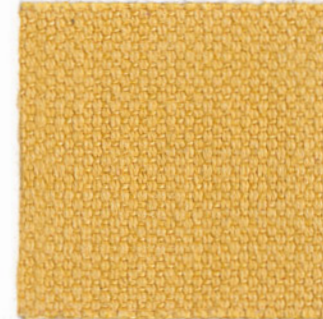
24802



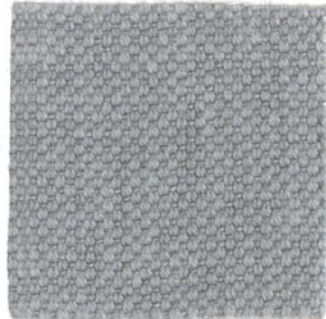
24801



24830



24813



24804



24810



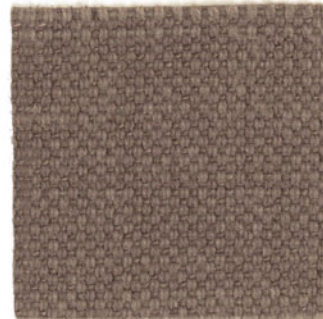
24837



24815



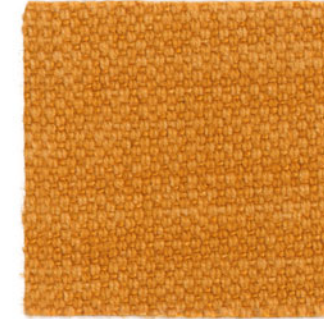
24803



24835



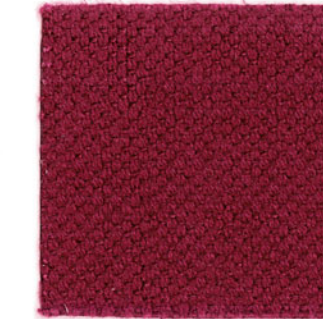
24840



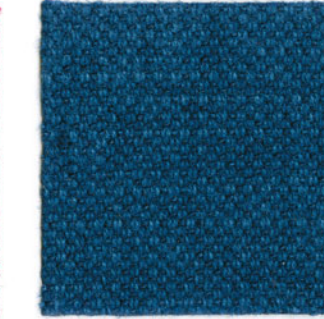
24817



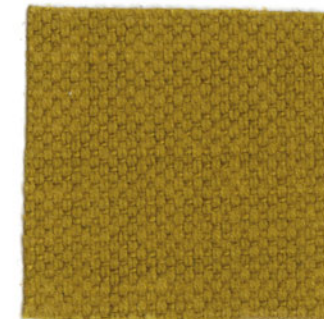
24834



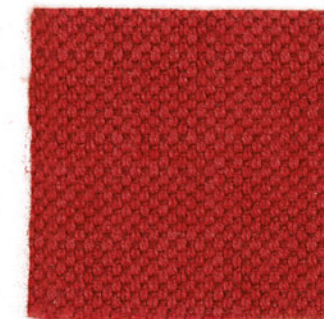
24829



24856



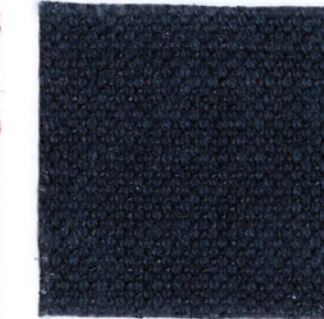
24842



24827



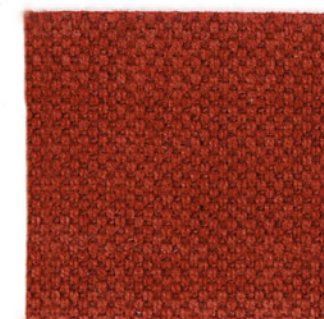
24820



24806



24848



24838



24844



24816

zanotta:

viburno

cat. 20

COMPOSIZIONE: 58% COTONE RICICLATO* 25% POLIESTERE 17% ACRILICO

COMPOSITION: 58% RECYCLED COTTON* 25% POLYESTER 17% ACRYLIC

COMPOSITION: 58% COTON RECYCLÉ* 25% POLYESTER 17% ACRYLIQUE

ZUSAMMENSTELLUNG: 58% WIEDERVERARBEITETE BAUMWOLLE* 25% POLYESTER 17% ACRYL

COMPOSICION: 58% ALGODON RECICLADO* 25% POLIÉSTER 17% ACRILICO

* cotton recycled yarns compliant with Global Recycled Standard v4.0 (GRS)



HEIGHT: **140 cm**

LIGHT RESISTANCE: **5 / 6**

ABRASION: **100.000**

WEIGHT: **1230 g / ml**

SHRINKAGE: **-0,5%**

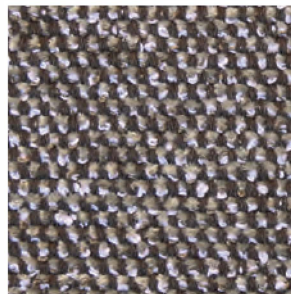
PILING: **4 / 5**

TEL. +39.0362.4981
WWW.ZANOTTA.IT

ZANOTTA SPA VIA VITTORIO VENETO 57
20834 NOVA MILANESE MB - ITALIA



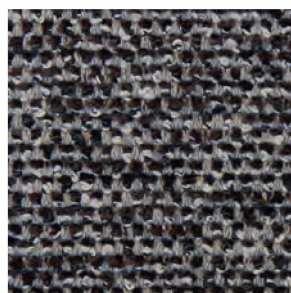
28004



28007



28017



28056



28054

COMPOSIZIONE: 61% VISCOSA 20% LINO 8% POLIESTERE 6% COTONE 3% ACRILICA 2% POLIAMMIDE

COMPOSITION: 61% VISCOSE 20% FLAX 8% POLYESTER 6% COTTON 3% ACRYLIC 2% POLYAMIDE

COMPOSITION: 61% VISCOSE 20% LIN 8% POLYESTER 6% COTON 3% ACRYLIQUE 2% POLYAMIDE

ZUSAMMENSTELLUNG: 61% VISKOSA 20% LEINEN 8% POLYESTER 6% BAUMWOLLE 3% ACRYL 2% POLYAMID

COMPOSICION: 61% VISCOSA 20% LINO 8% POLIÉSTER 6% ALGODON 3% ACRILICO 2% POLIAMIDA



TEL. +39.0362.4981 FAX +39.0362.498900
WWW.ZANOTTA.IT

ZANOTTA SPA VIA VITTORIO VENETO 57
20834 NOVA MILANESE MB - ITALIA



27801



27803



27840



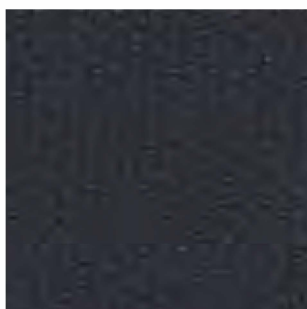
27853



27802



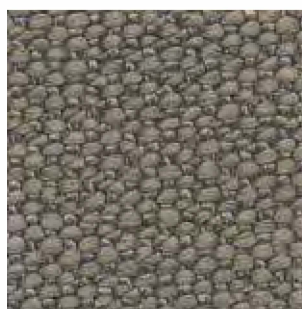
27824



27805



27804



27841



27826

zanotta:

victor

cat. 20

COMPOSIZIONE: 33% ACRILICO 24% VISCOSA 23% COTONE 12% LINO 8% POLIESTERE
COMPOSITION: 33% ACRYLIC 24% VISCOSE 23% COTTON 12% FLAX 8% POLYESTER
COMPOSITION: 33% ACRYLIQUE 24% VISCOSE 23% COTON 12% LIN 8% POLYESTER
ZUSAMMENSTELLUNG: 33% ACRYL 24% VISKOSE 23% BAUMWOLLE 12% LEINEN 8% POLYESTER
COMPOSICION: 33% ACRILICO 24% VISCOSA 23% ALGODON 12% LINO 8% POLIÉSTER



HEIGHT: 140 cm

LIGHT RESISTANCE: 4 / 5

ABRASION: 25,000

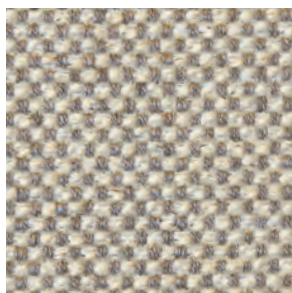
WEIGHT: 870 g / ml

SHRINKAGE: -2%

PILING: 4



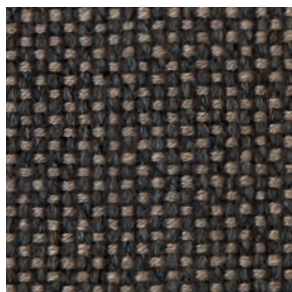
28101



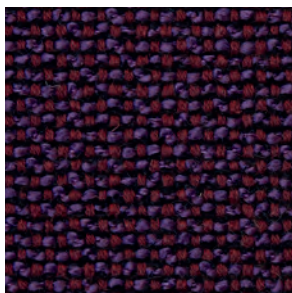
28135



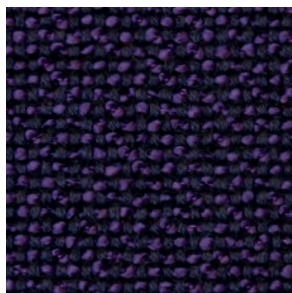
28157



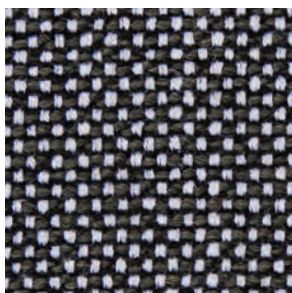
28117



28121



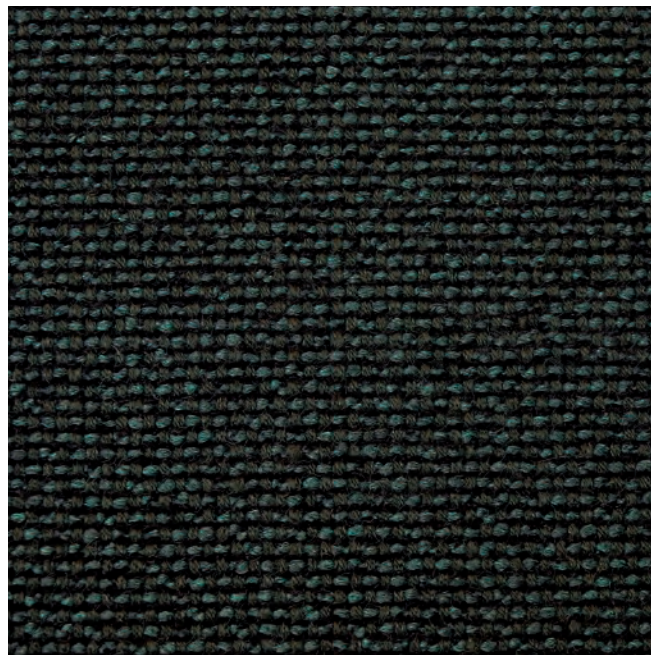
28120



28116



28115



28148

TEL. +39.0362.4981
WWW.ZANOTTA.IT

ZANOTTA SPA VIA VITTORIO VENETO 57
20834 NOVA MILANESE MB - ITALIA

zanotta:

viero

cat. 20

COMPOSIZIONE: 54% COTONE 28% ACRILICO 18% POLIESTERE 54%
COMPOSITION: COTTON 28% ACRYLIC 18% POLYESTER 54%
COMPOSITION: COTON 28% ACRYLIQUE 18% POLYESTER 54%
ZUSAMMENSTELLUNG: BAUMWOLLE 28% AKRYL 18% POLYESTER 54%
COMPOSICION: ALGODON 28% ACRILICO 18% POLIÉSTER



HEIGHT: 140 cm

WEIGHT: 1030 g/ml

LIGHT RESISTANCE: 5/6

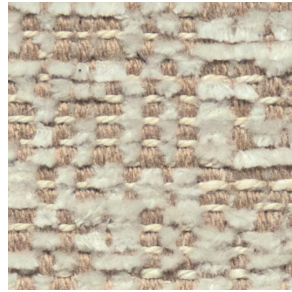
SHRINKAGE: +/- 0 %

ABRASION: 50.000

PILING: 4/5



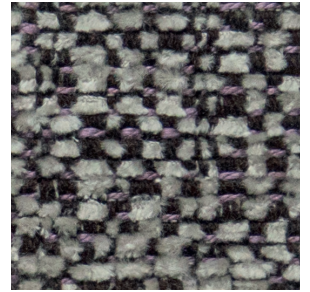
24601



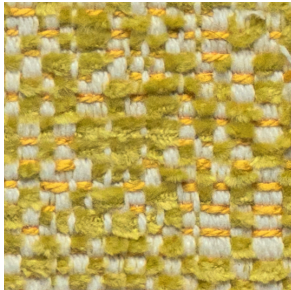
24607



24653



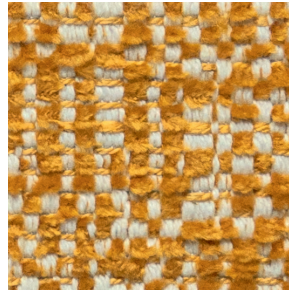
24604



24645



24642



24617



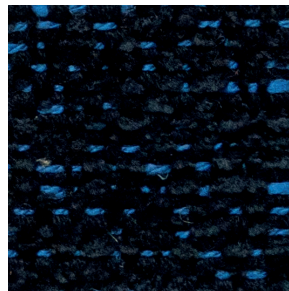
24615



24633



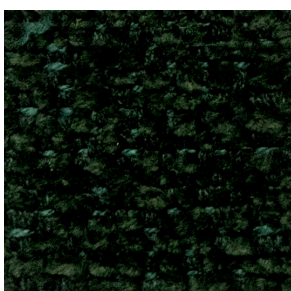
24634



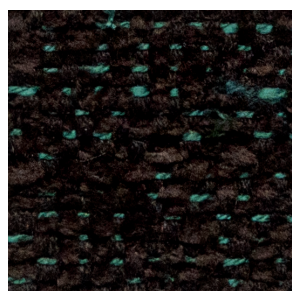
24657



24656



24654



24647



24616

TEL. +39.0362.4981
WWW.ZANOTTA.IT

ZANOTTA SPA VIA VITTORIO VENETO 57
20834 NOVA MILANESE MB - ITALIA

COMPOSIZIONE: 39% VISCOSA 24% ACRILICA 19% COTONE 13% POLIESTERE 5% LINO

COMPOSITION: 39% VISCOSE 24% ACRYLIC 19% COTTON 13% POLYESTERE 5% FLAX

COMPOSITION: 39% VISCOSE 24% ACRYLIQUE 19% COTON 13% POLYESTER 5% LIN

ZUSAMMENSTELLUNG: 39% VISKOSE 24% AKRYL 19% BAUMWOLLE 13% POLYESTER 5% LEINEN

COMPOSICION: 39% VISCOSA 24% ACRILICO 19% ALGODON 13% POLIESTER 5% LINO



27702



27756



27703



27718



27740



27747



27704



27705



27706

COMPOSIZIONE: 81% PVC 19% POLIESTERE - RESISTENTE AL FUOCO
COMPOSITION: 81% PVC 19% POLYESTER - FLAME RETARDANT
COMPOSITION: 81% PVC 19% POLYESTER - FEU ENDURANCE
ZUSAMMENSTELLUNG: 81% PVC 19% POLYESTER - FEUERBESTÄNDIG
COMPOSICION: 81% PVC 19% POLIÉSTER - RESISTIENTE AL FUEGO



27505



27501



27506



27547



27557



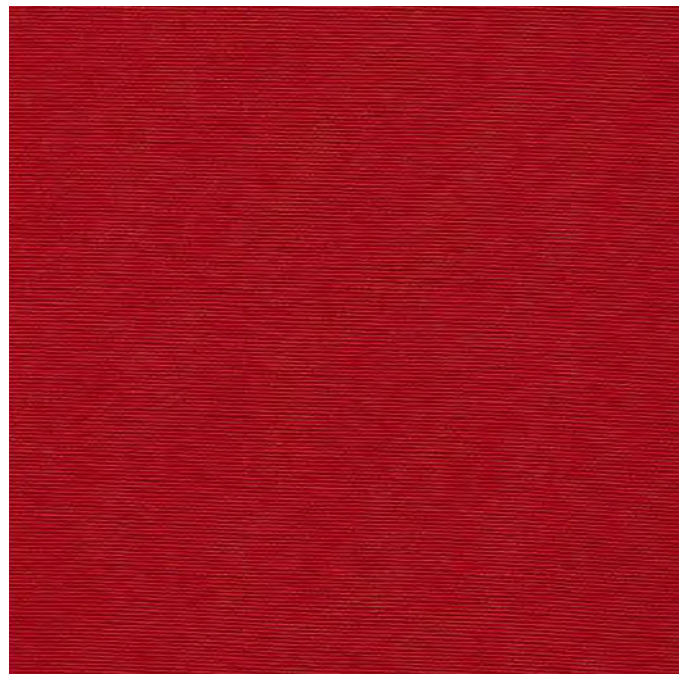
27514



27552



27517



27527

zanotta:

ecofire cat. 30

COMPOSIZIONE: 71% PVC 27% COTONE 2% POLIURETANO - RESISTENTE AL FUOCO

COMPOSITION: 71% PVC 27% COTTON 2% POLYURETHANE - FLAME RETARDANT

COMPOSITION: 71% PVC 27% COTON 2% POLYURÉTHANE - FEU ENDURANCE

ZUSAMMENSTELLUNG: 71% PVC 27% BAUMWOLLE 2% POLYHURETHAN - FEUERBESTÄNDIG

COMPOSICION: 71% PVC 27% ALGODÓN 2% POLIURETANO - RESISTIENTE AL FUEGO



TEL. +39.0362.4981 FAX +39.0362.451038
WWW.ZANOTTA.IT

ZANOTTA SPA VIA VITTORIO VENETO 57
20834 NOVA MILANESE MB - ITALIA



31601



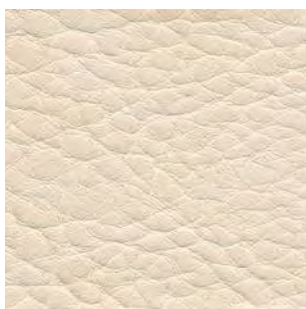
31627



31641



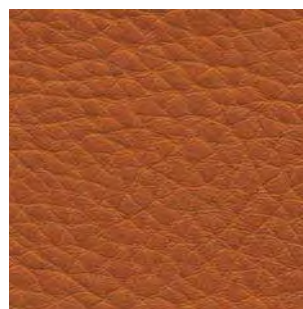
31603



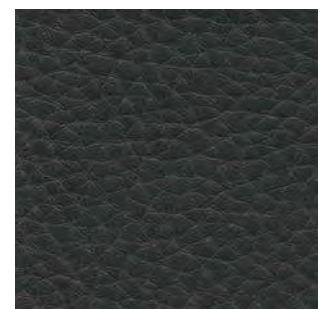
31602



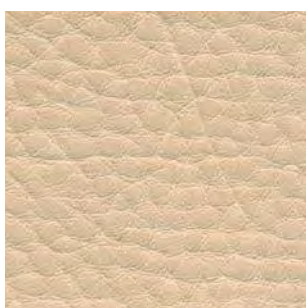
31629



31626



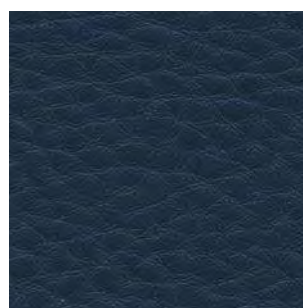
31605



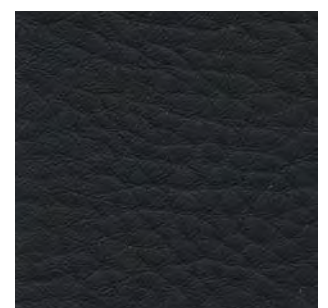
31631



31616



31657



31606

zanotta:

taiga

cat. 30

COMPOSIZIONE: 35% ACRILICO 19% VISCOSA 16% LANA VERGINE 12% POLIESTERE 10% LINO 8% COTONE

COMPOSITION: 35% ACRYLIC 19% VISCOSE 16% PURE WOOL 12% POLYESTER 10% FLAX 8% COTTON

COMPOSITION: 35% ACRYLIQUE 19% VISCOSE 16% LAINE VIERGE 12% POLYESTER 10% LIN 8% COTON

ZUSAMMENSTELLUNG: 35% ACRYL 19% VISKOSE 16% REINE WOLLE 12% POLYESTER 10% LEINEN 8% BAUMWOLLE

COMPOSICION: 35% ACRILICO 19% VISCOSA 16% LANA VIRGEN 12% POLIESTER 10% LINO 8% ALGODON



HEIGHT: 140 cm

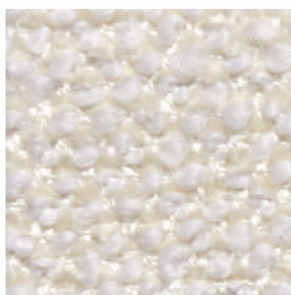
LIGHT RESISTANCE: 5 / 6

ABRASION: 40 000

WEIGHT: 1050 g / ml

SHRINKAGE: +/- 2 %

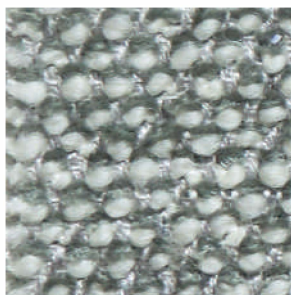
PILING: 4



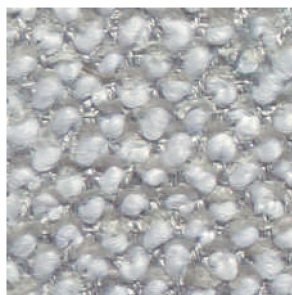
32501



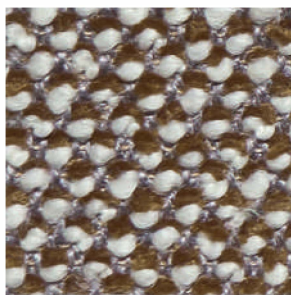
32503



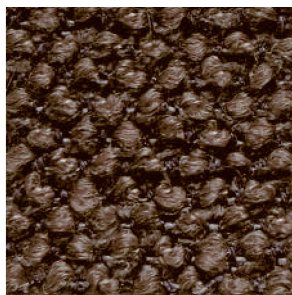
32544



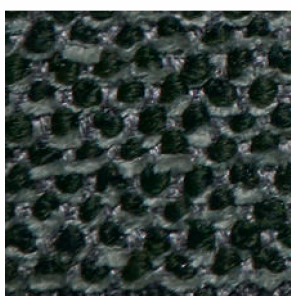
32504



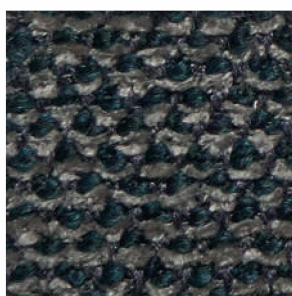
32516



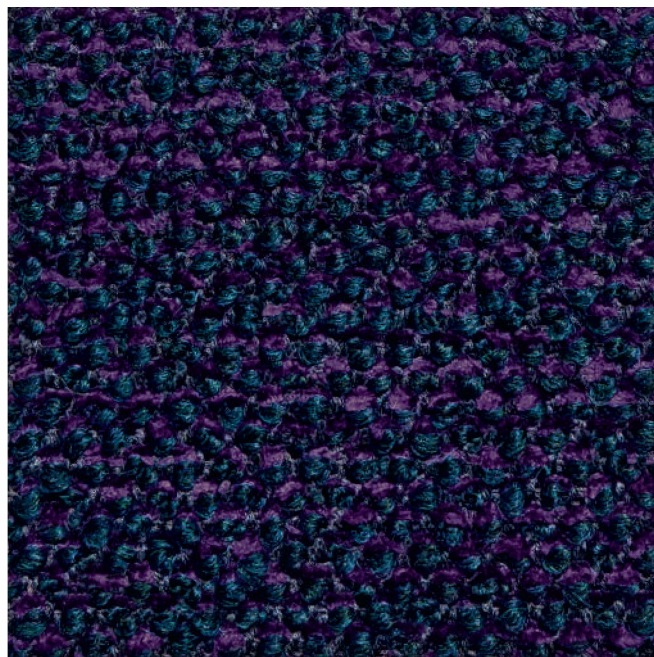
32514



32542



32554



32535

TEL. +39.0362.4981
WWW.ZANOTTA.IT

ZANOTTA SPA VIA VITTORIO VENETO 57
20834 NOVA MILANESE MB - ITALIA

COMPOSIZIONE: 100% POLIPROPILENE ADATTO PER USO ESTERNO
COMPOSITION: 100% POLYPROPYLEN SUITABLE FOR OUTDOOR USE
COMPOSITION: 100% POLYPROPYLEN INDIQUÉ POUR UN USAGE EXTÉRIEUR
ZUSAMMENSTELLUNG: 100% POLYPROPYLEN PASSEND FÜRS FREIE
COMPOSICION: 100% POLIPROPILENO INDICADO PARA USO EXTERIOR

Talasso



Cat. 30



26003



26093



26030



26090



26031



26091



26075



26098



26007



26097



26016



26096



26004



26094



26005



26095

COMPOSIZIONE: 72% LINO 14% COTONE 14% VISCOSA

COMPOSITION: 72% FLAX 14% COTTON 14% VISCOSE

COMPOSITION: 72% LIN 14% COTON 14% VISCOSE

ZUSAMMENSTELLUNG: 72% LEINEN 14% BAUMWOLLE 14% VISKOSE

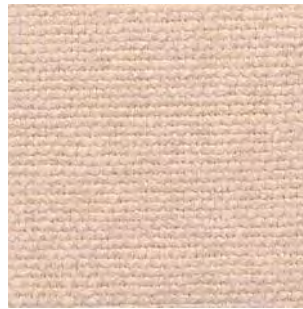
COMPOSICION: 72% LINO 14% ALGODON 14% VISCOSA



27601



27617



27625



27642



27602



27654



27640



27644



27603



27614



27656



27627



27641



27616



27605



27606

COMPOSIZIONE: 100% POLIESTERE - RESISTENTE AL FUOCO
COMPOSITION: 100% POLYESTER - FLAME RETARDANT
COMPOSITION: 100% POLYESTER - FEU ENDURANCE
ZUSAMMENSTELLUNG: 100% POLYESTER - FEUERBESTÄNDIG
COMPOSICION: 100% POLIÉSTER - RESISTIENTE AL FUEGO



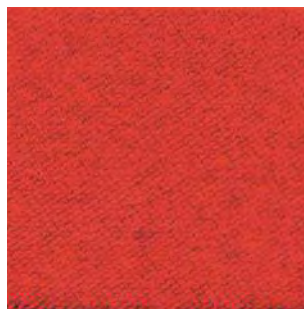
26901



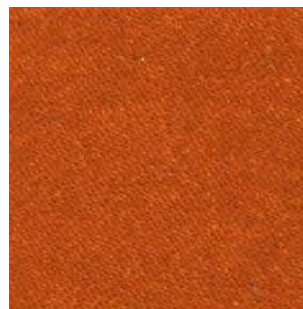
26927



26904



26917



26926



26929



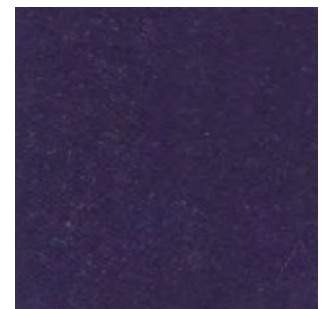
26931



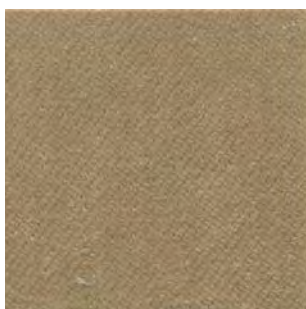
26943



26942



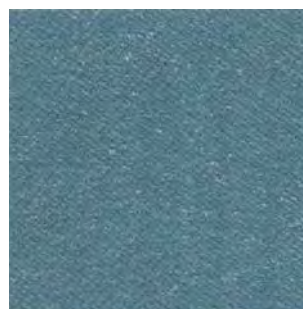
26944



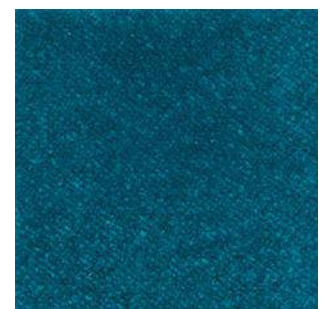
26935



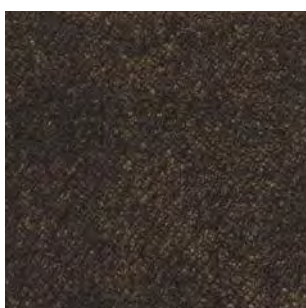
26908



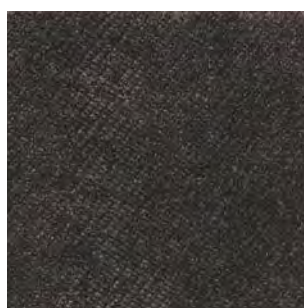
26952



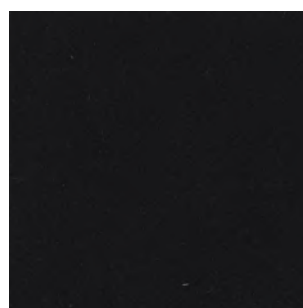
26940



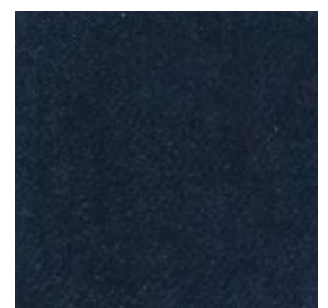
26936



26905



26906



26957

zanotta:

COMPOSIZIONE: **100% COTONE**
COMPOSITION: **100% COTTON**
COMPOSITION: **100% COTON**
ZUSAMMENSTELLUNG: **100% BAUMWOLLE**
COMPOSICION: **100% ALGODON**

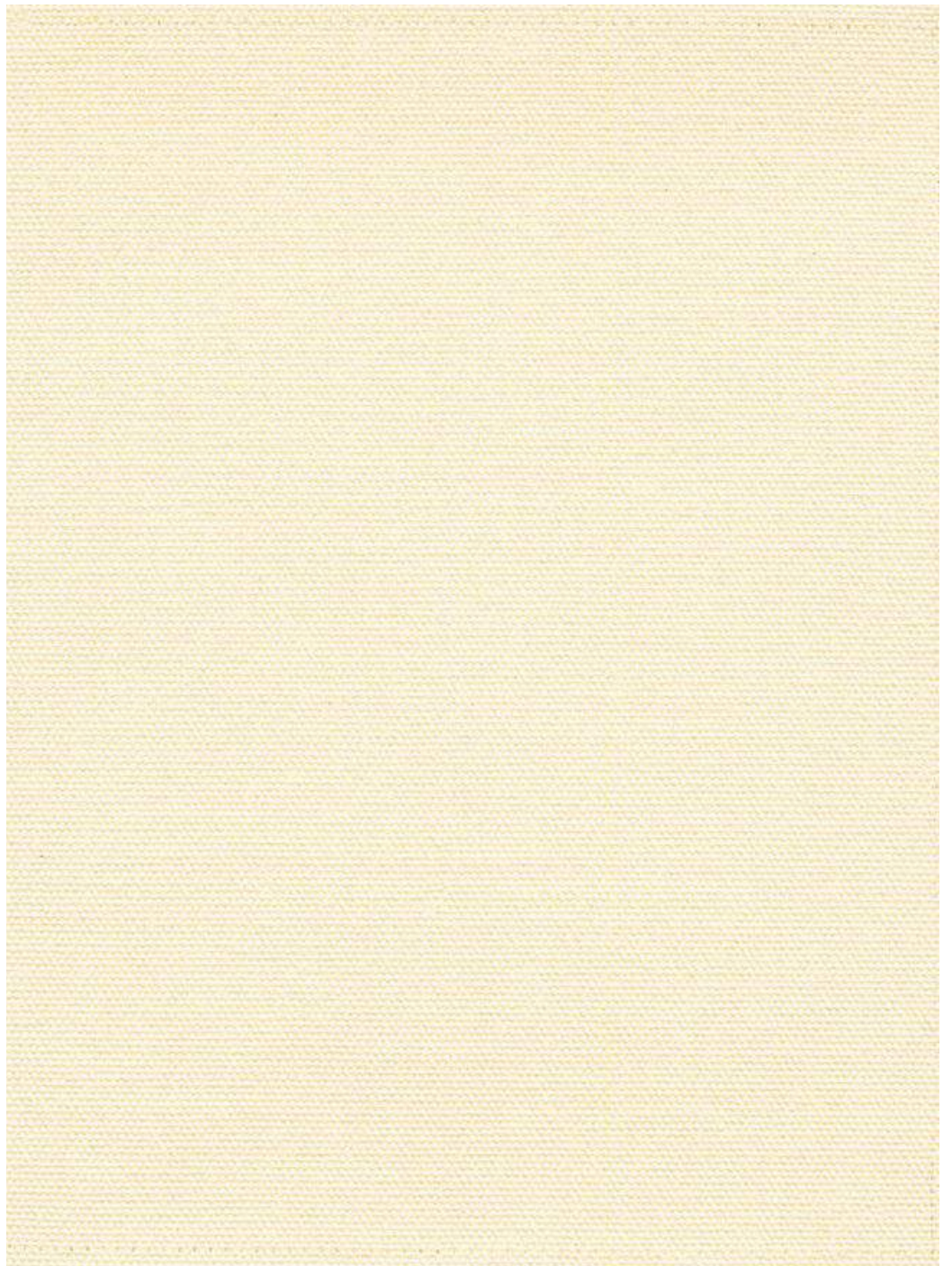
telastrong

cat. 30



TEL. +39.0362.4981 FAX +39.0362.498900
WWW.ZANOTTA.IT

ZANOTTA SPA VIA VITTORIO VENETO 57
20834 NOVA MILANESE MB - ITALIA



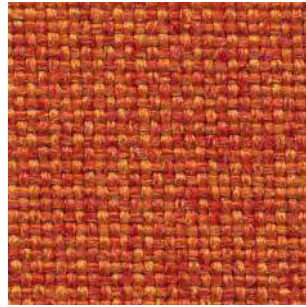
COMPOSIZIONE: 100% POLIESTERE RESISTENTE AL FUOCO
COMPOSITION: 100% POLYESTER FLAME RETARDANT
COMPOSITION: 100% POLYESTER FEU ENDURANCE
ZUSAMMENSTELLUNG: 100% POLYESTER FEUERBESTÄNDIG
COMPOSICION: 100% POLIÉSTER RESISTIENTE AL FUEGO



30602



30654



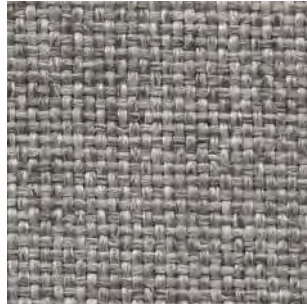
30617



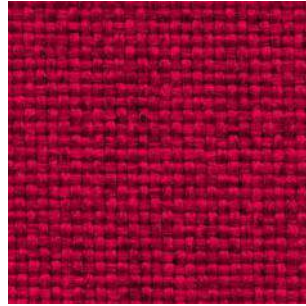
30614



30607



30655



30628



30629



30642



30604



30657



30658



30638



30605



30673



30606

TEL. +39.0362.4981 FAX +39.0362.498900
WWW.ZANOTTA.IT

ZANOTTA SPA VIA VITTORIO VENETO 57
20834 NOVA MILANESE MB - ITALIA

zanotta:

COMPOSIZIONE: 54 % LANA 23% COTONE 11%POLIAMMIDE 11%ALPACA 1%ELASTAN
COMPOSITION: 54% WOOL 23% COTTON 11% NYLON 11% ALPACA 1% ELASTANE
COMPOSITION: 54% LAINE 23% COTON 11% POLYAMIDE 11% ALPAGA 1% ELASTHANNE
ZUSAMMENSTELLUNG: 54% WOLLE 23% BAUMWOLLE 11% POLYAMID 11% ALPAKA 1% ELASTHAN
COMPOSICION: 54% LANA 23% ALGODON 11% POLIAMIDA 11% ALPACA 1%ELASTANO

terso cat. 30



HEIGHT: 140 cm

LIGHT RESISTANCE: 4/5

ABRASION: 50.000

WEIGHT: 693 g/ml

SHRINKAGE: +/- 2 %

PILING: 3/4



32901



32940



32917



32935



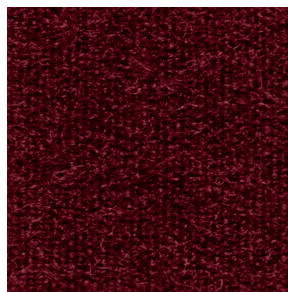
32930



32934



32926



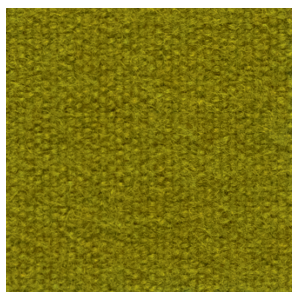
32920



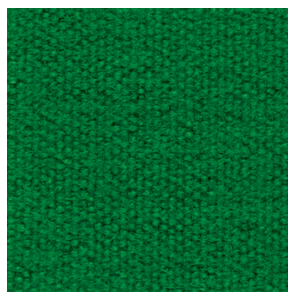
32916



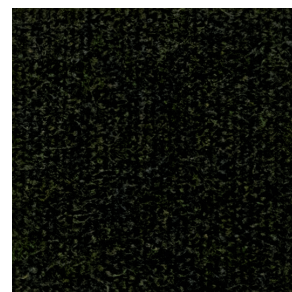
32913



32945



32946



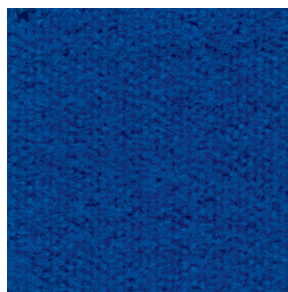
32948



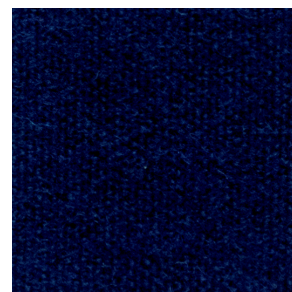
32961



32950



32956



32957

TEL. +39.0362.4981
WWW.ZANOTTA.IT

ZANOTTA SPA VIA VITTORIO VENETO 57
20834 NOVA MILANESE MB - ITALIA

zanotta:

testura

COMPOSIZIONE: 35% COTONE 41% POLIESTERE RICICLATO* 24% COTONE RICICLATO *
COMPOSITION: 35% COTTON 41% RECYCLED POLYESTER* 24% RECYCLED COTON*
COMPOSITION: 35% COTON 41% POLYESTER RECYCLE'* 24% COTON RECYCLE'*
ZUSAMMENSTELLUNG: 35% BAUMWOLLE 41% WIEDERVERARBEITETES POLYESTER*
24% WIEDERVERARBEITETE BAUMWOLLE*
COMPOSICION: 35% ALGODON 41% POLIESTER RECICLADO* 24% ALGODON RECICLADO*

cat. 30



HEIGHT: 140 cm

LIGHT RESISTANCE: 4

ABRASION: 30 000

WEIGHT: 940 g / ml

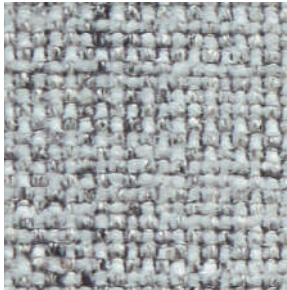
SHRINKAGE: - 2,5 %

PILING: 5

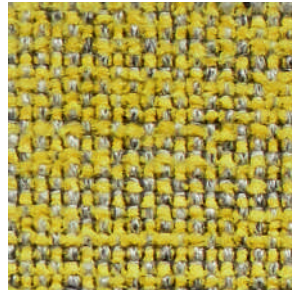
*Pre-consumer and post-consumer recycled cotton and polyester yarns to meet social and environmental requirements at each stage of the supply chain without the use of potentially harmful chemicals.

TEL. +39.0362.4981
WWW.ZANOTTA.IT

ZANOTTA SPA VIA VITTORIO VENETO 57
20834 NOVA MILANESE MB - ITALIA



32601



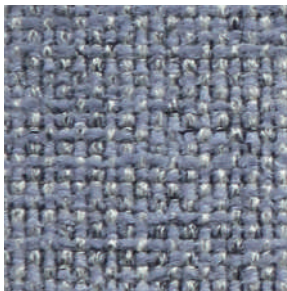
32615



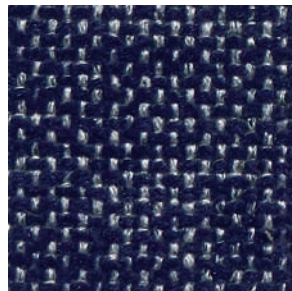
32635



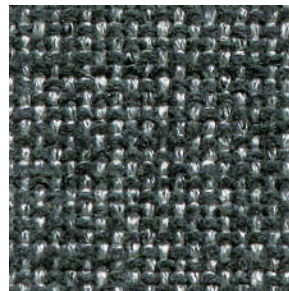
32636



32659



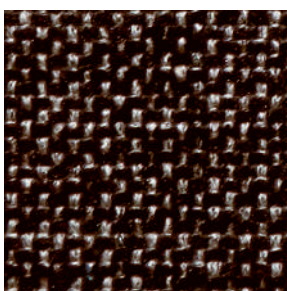
32656



32642



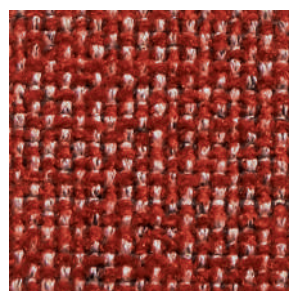
32640



32673



32616



32630



32627

COMPOSIZIONE: 30% VISCOSA 19% LINO 14% COTONE 10% POLIESTERE 27% ACRILICO

COMPOSITION: 30% VISCOSE 19% FLAX 14% COTTON 10% POLYESTER 27% ACRYLIC

COMPOSITION: 30% VISCOSE 19% LIN 14% COTON 10% POLYESTER 27% ACRYLIQUE

ZUSAMMENSTELLUNG: 30% VISKOSA 19% LEINEN 14% BAUMWOLLE 10% POLYESTER 27% ACRYL

COMPOSICION: 30% VISCOSA 19% LINO 14% ALGODON 10% POLIÉSTER 27% ACRILICO



31831



31803



31853



31804



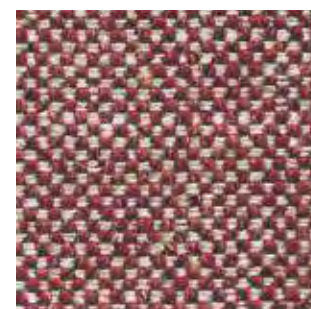
31825



31826



31827



31829



31819



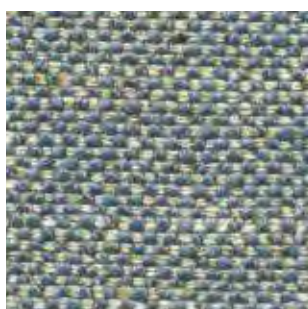
31818



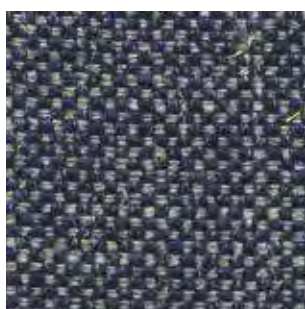
31841



31854



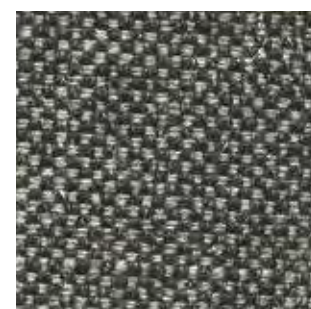
31852



31856



31816



31805

COMPOSIZIONE: 41% COTONE 36% ACRILICA 9% POLIESTERE 7% POLIAMMIDE 3% VISCOSA 2% LANA 2% LINO

COMPOSITION: 41% COTTON 36% ACRYLIC 9% POLYESTER 7% POLYAMIDE 3% VISCOSE 2% WOOL 2% FLAX

COMPOSITION: 41% COTON 36% ACRYLIQUE 9% POLYESTER 7% POLYAMIDE 3% VISCOSE 2% LAINE 2% LIN

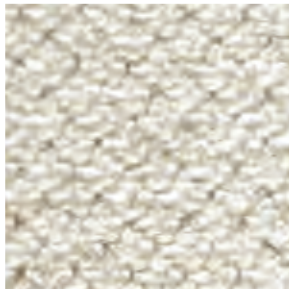
ZUSAMMENSTELLUNG: 41% BAUMWOLLE 36% ACRYL 9% POLYESTER 7% POLYAMID 3% VISKOSE 2% WOLLE 2% LEINEN

COMPOSICION: 41% ALGODON 36% ACRILICO 9% POLIÉSTER 7% POLIAMIDA 3% VISCOSA 2% LANA 2% LINO



TEL. +39.0362.4981
FAX +39.0362.498900
WWW.ZANOTTA.IT

ZANOTTA SPA VIA VITTORIO VENETO 57
20834 NOVA MILANESE MB - ITALIA



32001



32030



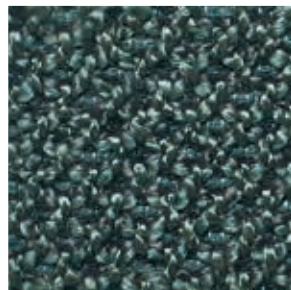
32031



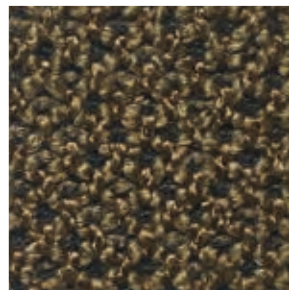
32004



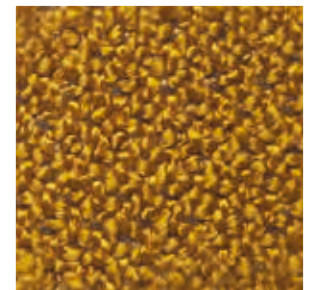
32003



32005



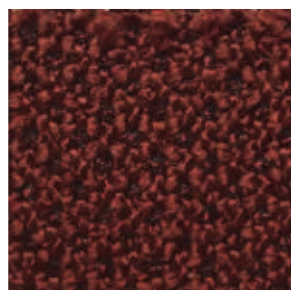
32041



32015



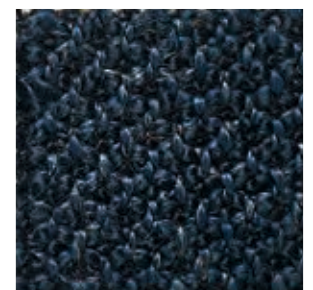
32017



32027



32059



32052

COMPOSIZIONE: 50% COTONE 33% VISCOSA 17% LINO
COMPOSITION: 50% COTTON 33% VISCOSE 17% FLAX
COMPOSITION: 50% COTON 33% VISCOSE 17% LIN
ZUSAMMENSTELLUNG: 50% BAUMWOLLE 33% VISKOSE 17% LEINEN
COMPOSICION: 50% ALGODON 33% VISCOSA 17% LINO

Toce



Cat. 30



26503



26593



26504



26530



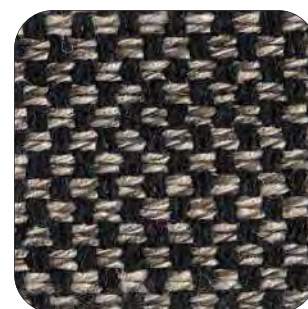
26505



26557



26556



26551

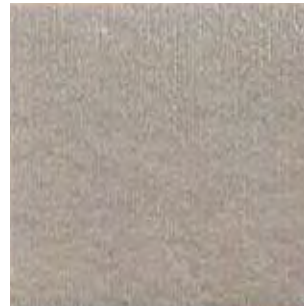
COMPOSIZIONE: 100% COTONE
COMPOSITION: 100% COTTON
COMPOSITION: 100% COTON
ZUSAMMENSTELLUNG: 100% BAUMWOLLE
COMPOSICION: 100% ALGODON



31902



31914



31954



31903



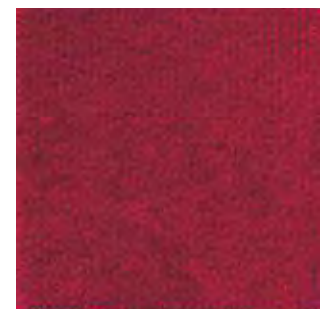
31923



31925



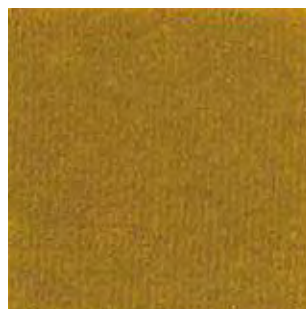
31929



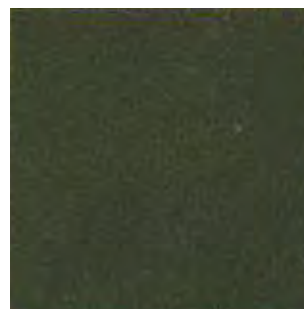
31927



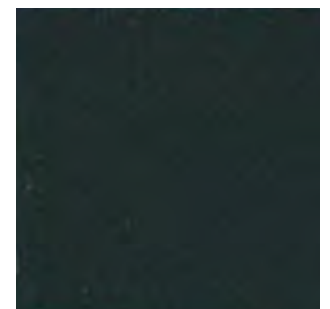
31937



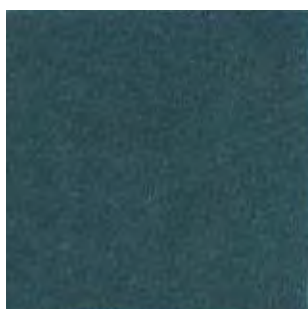
31918



31946



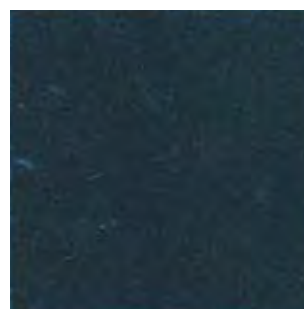
31947



31952



31955



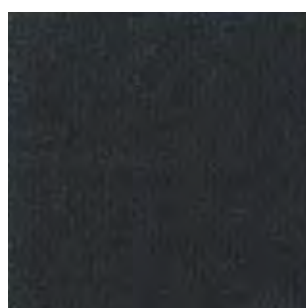
31956



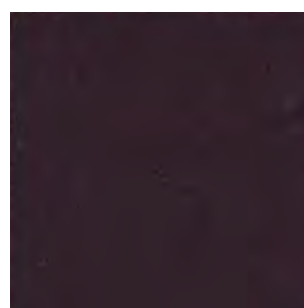
31957



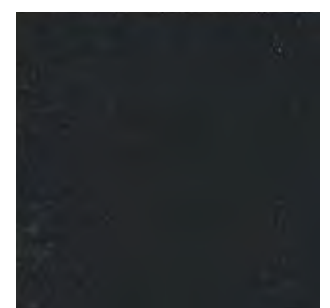
31904



31905



31920



31906

zanotta:

trama

cat. 30

COMPOSIZIONE: 72% LINO 15% COTONE 9% VISCOSA 4% POLIAMMIDE
COMPOSITION: 72% FLAX 15% COTTON 9% VISCOSE 4% POLYAMIDE
COMPOSITION: 72% LIN 15% COTON 9% VISCOSE 4% POLYAMIDE
ZUSAMMENSTELLUNG: 72% LEINEN 15% BAUMWOLLE 9% VISKOSE 4% POLYAMID
COMPOSICION: 72% LINO 15% ALGODON 9% VISCOSA 4% POLIAMIDA



HEIGHT: **140 cm**

LIGHT RESISTANCE: **4**

ABRASION: **20,000**

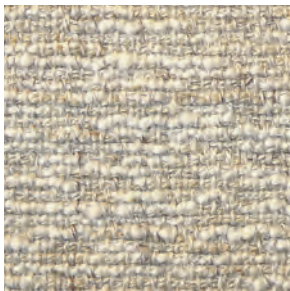
WEIGHT: **1145 g / ml**

SHRINKAGE: **-1,5%**

PILING: **3 / 4**

TEL. +39.0362.4981
WWW.ZANOTTA.IT

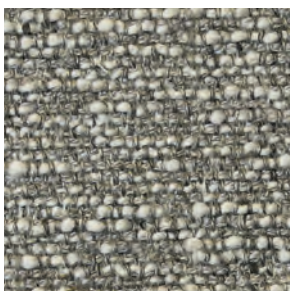
ZANOTTA SPA VIA VITTORIO VENETO 57
20834 NOVA MILANESE MB - ITALIA



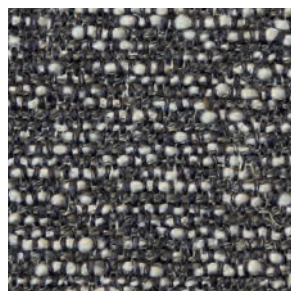
32403



32453



32404



32407



32435

COMPOSIZIONE: 33%VISCOSA 28%ACRILICO 14%LANA 9%COTONE 7%POLIESTERE 6%LINO
 2%POLIAMMIDE 1%ELASTAN
 COMPOSITION: 33% VISCOSE 28% ACRYLIC 14% WOOL 9% COTTON 7% POLYESTER 7% FLAX
 2% NYLON 1% ELASTANE
 COMPOSITION: 33% VISCOSE 28% ACRYLIQUE 14% LAINE 9% COTON 7% POLYESTER 6% LIN
 2% POLYAMIDE 1% ELASTHANNE
 ZUSAMMENSTELLUNG: 33% VISKOSE 28% ACRYL 14% WOLLE 9% BAUMWOLLE 7% POLYESTER 6%
 LEINEN 2% POLYAMID 1% ELASTHAN
 COMPOSICION: 33% VISCOSA 28% ACRILICO 14% LANA 9% ALGODON 7% POLIÉSTER 6% LINO
 2% POLIAMIDA 1%ELASTANO



HEIGHT: **140 cm**
 WEIGHT: **1300 g/ml**

LIGHT RESISTANCE: **5**
 SHRINKAGE: **+/- 1,80 %**

ABRASION: **60.000**
 PILING: **4**



40501



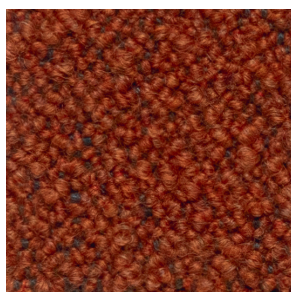
40507



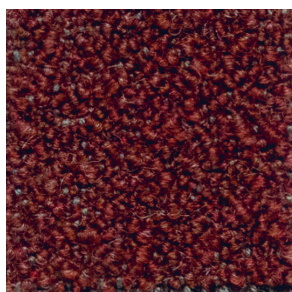
40553



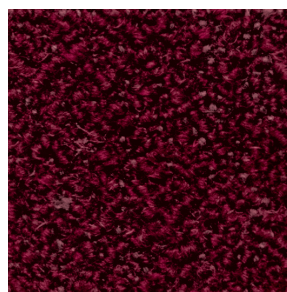
40538



40526



40530



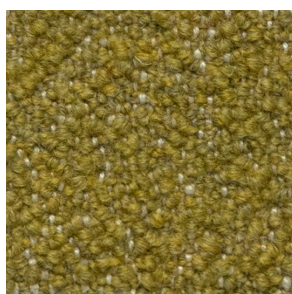
40520



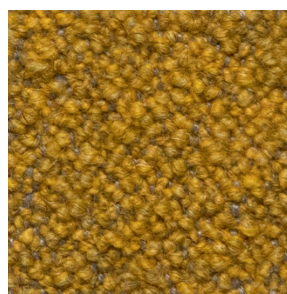
40516



40513



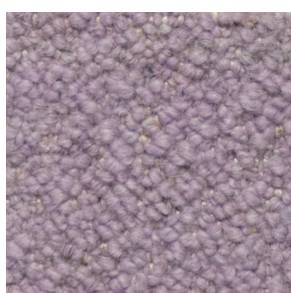
40545



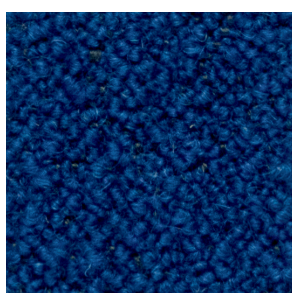
40515



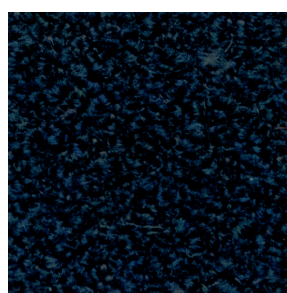
40547



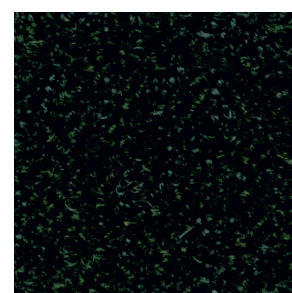
40561



40557



40556



40548

zanotta:

queen

cat. 40

COMPOSIZIONE: 37% ACRILICO 28% LANA 22% POLIESTERE 13% COTONE
COMPOSITION: 37% ACRYLIC 28% WOOL 22% POLYESTER 13% COTTON
COMPOSITION: 37% ACRYLIQUE 28% LAINE 22% POLYESTER 13% COTON
ZUSAMMENSTELLUNG: 37% ACRYL 28% WOLLE 22% POLYESTER 13% BAUMWOLLE
COMPOSICION: 37% ACRILICO 28% LANA 22% POLIESTER 13% ALGODON



HEIGHT: 140 cm

LIGHT RESISTANCE: 5 / 6

ABRASION: 80.000

WEIGHT: 1000 g / ml

SHRINKAGE: +/- 2%

PILING: 4



40407



40403



40414



40402



40422



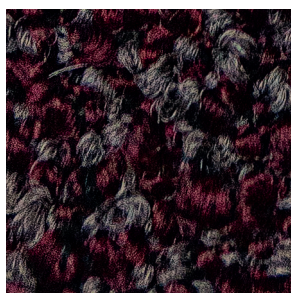
40418



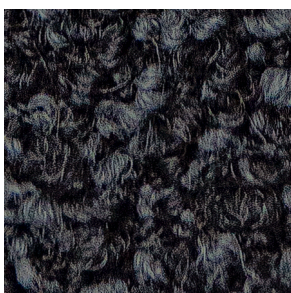
40447



40404



40425



40405



40419

TEL. +39.0362 4981
WWW.ZANOTTA.IT

ZANOTTA SPA VIA VITTORIO VENETO 57
20834 NOVA MILANESE MB - ITALIA

40304 - 40307 - 40326 - 40359 - 40358

COMPOSIZIONE: 40% LANA 35% VISCOSA 12% POLIESTERE 10% ACRILICA 3% NYLON

COMPOSITION: 40% WOOL 35% VISCOSE 12% POLYESTER 10% ACRYLIC 3% NYLON

COMPOSITION: 40% LAINE 35% VISCOSE 12% POLYESTER 10% ACRYLIQUE 3% NYLON

ZUSAMMENSTELLUNG: 40% WOLLE 35% VISKOSE 12% POLYESTER 10% ACRYL 3% NYLON

COMPOSICION: 40% LANA 35% VISCOSA 12% POLIÉSTER 10% ACRILICO 3% NYLON



40301 - 40303 - 40357 - 40306 - 40316

COMPOSIZIONE: 42% LANA 22% VISCOSA 16% POLIESTERE 11% COTONE 7% ACRILICA 2% NYLON

COMPOSITION: 42% WOOL 22% VISCOSE 16% POLYESTER 11% COTTON 7% ACRYLIC 2% NYLON

COMPOSITION: 42% LAINE 22% VISCOSE 16% POLYESTER 11% COTON 7% ACRYLIQUE 2% NYLON

ZUSAMMENSTELLUNG: 42% WOLLE 22% VISKOSE 16% POLYESTER 11% BAUMWOLLE 7% ACRYL 2% NYLON

COMPOSICION: 42% LANA 22% VISCOSA 16% POLIÉSTER 11% ALGODON 7% ACRILICO 2% NYLON

TEL. +39.0362.4981
WWW.ZANOTTA.IT
FAX +39.0362.498900

ZANOTTA SPA VIA VITTORIO VENETO 57
20834 NOVA MILANESE MB - ITALIA



40301



40304



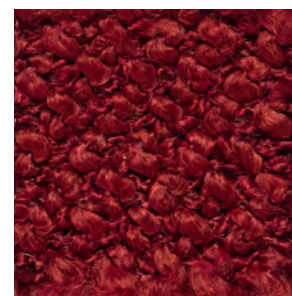
40303



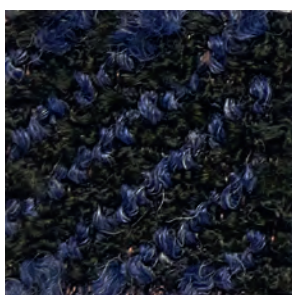
40307



40357



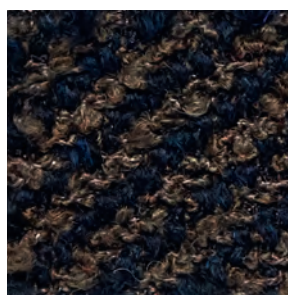
40326



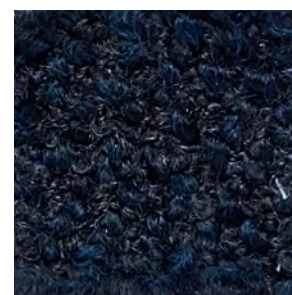
40306



40359



40316



40358

COMPOSIZIONE: 95% LANA 5% POLIAMMIDE RESISTENTE AL FUOCO

COMPOSITION: 95% WOOL 5% POLYAMIDE FLAME RETARDANT

COMPOSITION: 95% LAINE 5% POLYAMIDE FEU ENDURANCE

ZUSAMMENSTELLUNG: 95% WOLLE 5% POLYAMID FEUERBESTÄNDIG

COMPOSICION: 95% LANA 5% POLIAMIDA RESISTENTE AL FUEGO

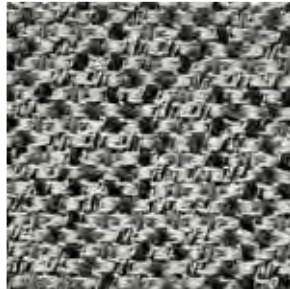


TEL. +39.0362.4981 FAX +39.0362.498900
WWW.ZANOTTA.IT

ZANOTTA SPA VIA VITTORIO VENETO 57
20834 NOVA MILANESE MB - ITALIA



32228



32203



32254



32215



32218



32247



32216



32205



32256



32257