

It's always  
nice to be  
inspired.



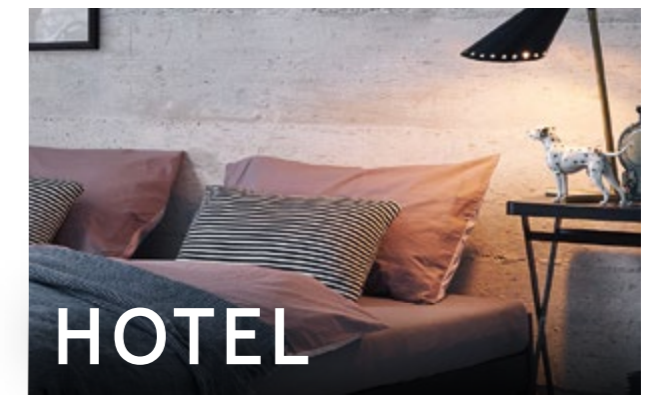
Contract

RICHARD LAMPERT

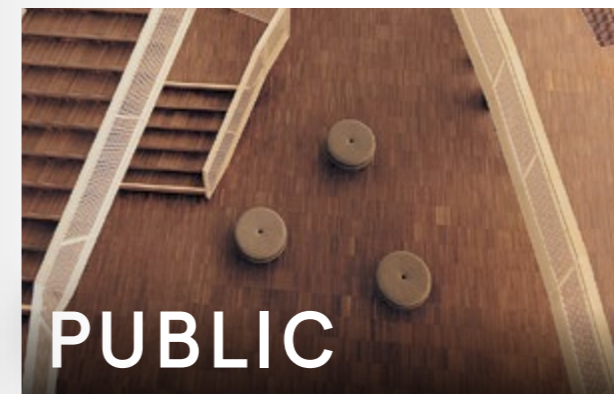
Our preferred materials  
for creating furniture:  
passion paired with realism  
and a sense of humour ...



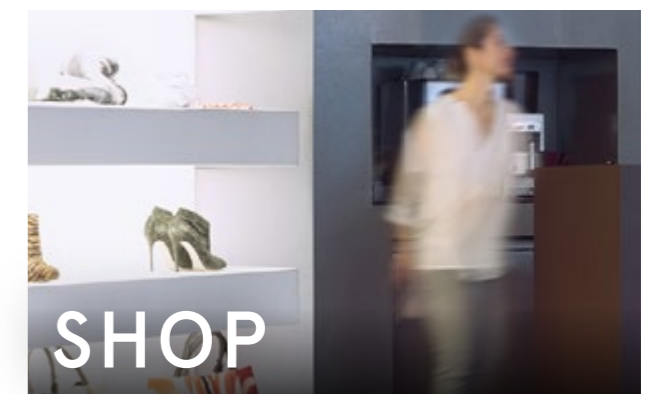
2



10



22



30



34



52

**PRODUCTS** 60

**DESIGNERS** 66



Barwagen, the iconic bar trolley from 1956, reproduced in its original splendour: black-coated steel profiles, classic 1950s castors and the original ribbed glass surfaces. (Bar)Culture for every kind of space.

Name **BARWAGEN**  
Design Herbert Hirche

A MOVEABLE BAR  
OR A SIDE TABLE





All-rounder on rollers. You will find it in surgeries, at reception or in the treatment room, and also as a chair for visitors in the office. It's used in all those places where people only sit temporarily instead of remaining in the same position all day. It's space-saving and the seat comes in either solid oak or with a cushion.

Name **MR. ROUND**  
Design Alexander Seifried





ROUND OR SQUARE -  
EMINENTLY MOBILE.





Waiting room, surgery, Stuttgart





Hotel, Magdeburg photo: Andreas Lander







THE STAPLE BED AS A PROPER  
DOUBLE BED: THERE'S NO GAP  
BETWEEN THE MATTRESSES.



Hotel room, Mannheim









Our trestle – ingeniously simple:  
a swivel arm was added to the lateral  
part of the original Eiermann table  
frame. An idea that clearly sets the  
design apart from the original and  
allows a multitude of useful options:  
various distances, centred or off-centre  
swivel arms, small or large tops, square  
or round or ...

Name EIERMANN 3  
Design Alexander Seifried





Unique and versatile: the original 1953 design by Egon Eiermann, available only from Richard Lampert. A true furniture classic, offering a unique multitude of combination and application options. The minimalist construction features a perfect relation between use of material and stability. Clever detailing and first-class quality.

Name EIERMANN 1  
Design Egon Eiermann

PUT A TOP ON IT:  
OAK, SPRUCE, LINOLEUM,  
BLACK, GREEN, RED ...



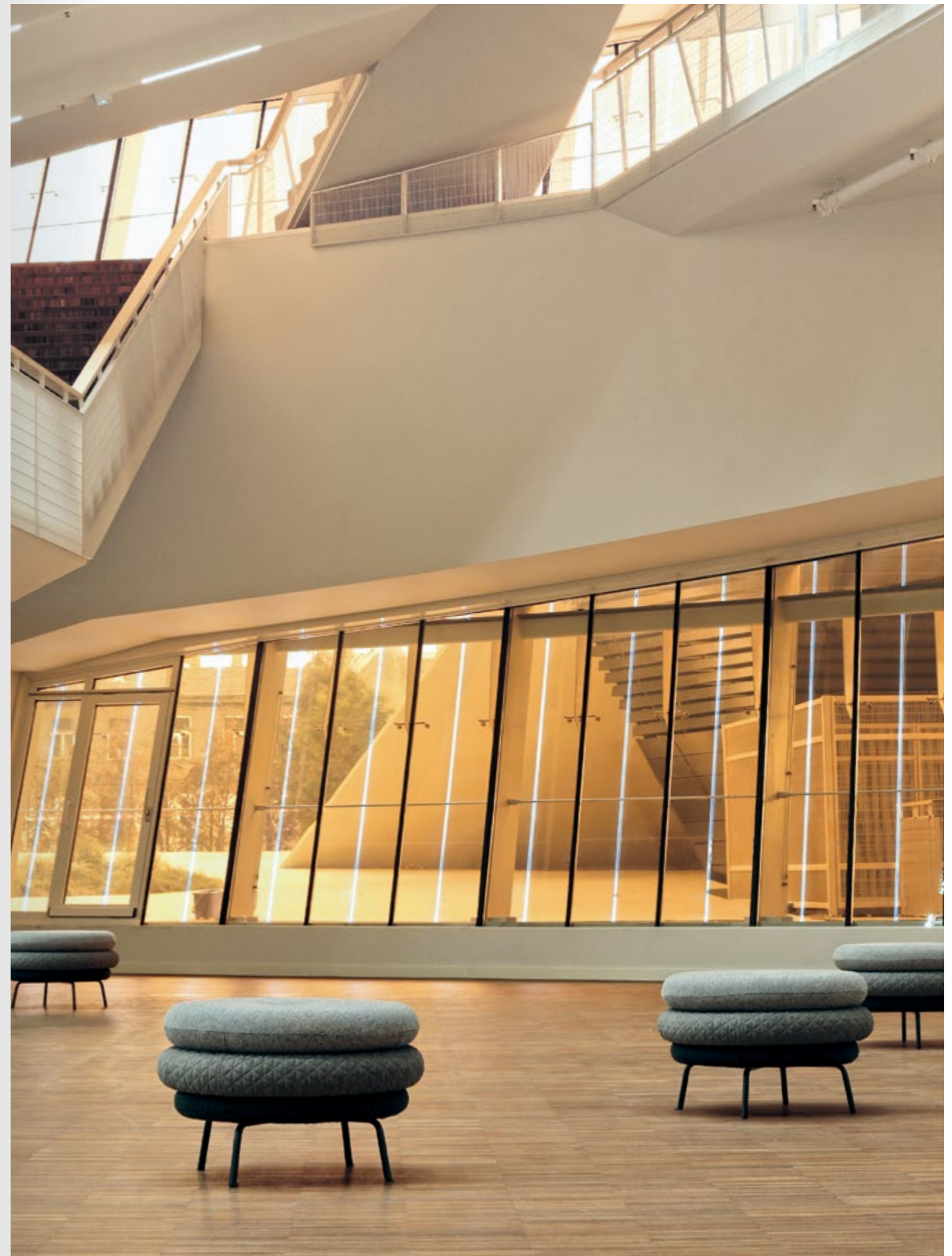
## PUBLIC

A black or chrome-plated tubular steel frame and three cushions placed one on top of the other: that's >Fat Tom<, an unconventional stool available in a wide range of colour and material combinations.

Name FAT TOM  
Design Alexander Seifried



A TOM FOR ALL OCCASIONS:  
WITH ONE, TWO OR  
THREE CUSHIONS!







A versatile, non-flammable seat based on a playful idea: any number of side panels, seats and backrests can be connected freely and combined with slide-on cushions. The resulting one, two and three-seater elements and benches can be arranged to change direction or to go around corners: the elements can be set up back-to-back or used without backrests. Let's stick together!

Name PIP  
Design Daniel Kern

BRAND NEW AND NON-FLAMMABLE.  
INNOVATIVE: NO STEEL,  
BUT GYPSUM FIBREBOARD





# SHOP

An island of tranquillity. Unconventional and comfortable. In the centre of the room or as a stand-alone feature. With a large range of coverings to meet individual needs. Always an eye-catcher.

Name ISLAND TOM  
Design Alexander Seifried



## SHOP

With the E10, multi-talented designer Egon Eiermann developed a unique type of chair in 1949 that derives its stability solely from its form and weaving technique. The innovative concept became famous when the chair was featured in the legendary German pavilion at the 1958 World Expo in Brussels.

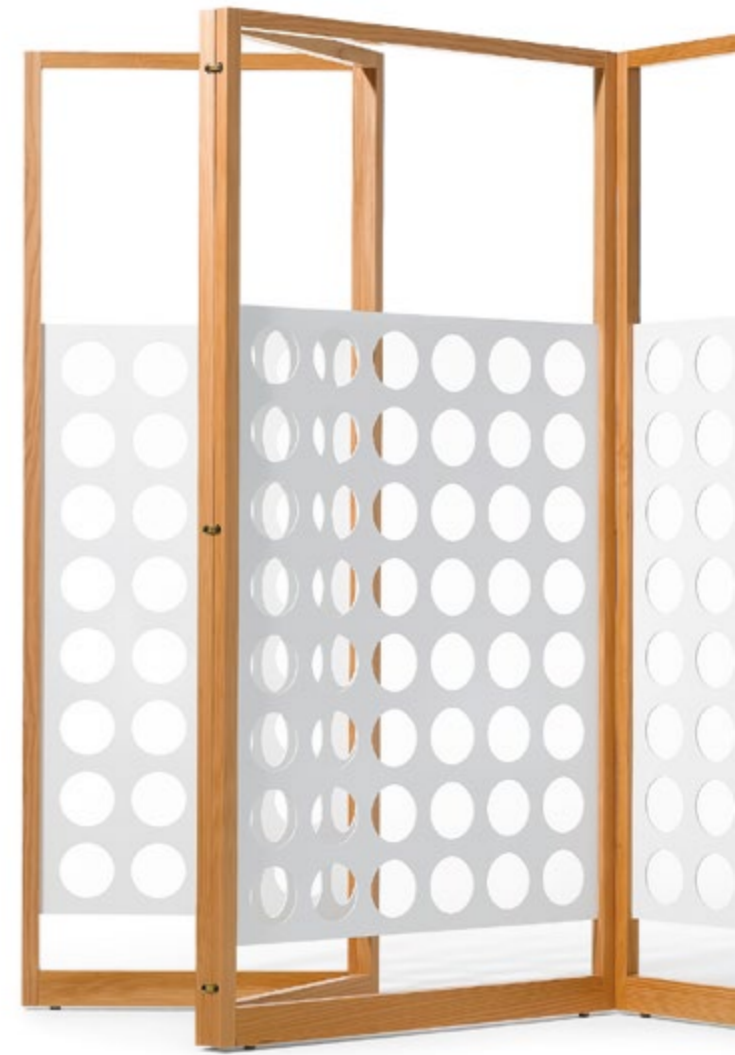
Name E10  
Design Egon Eiermann





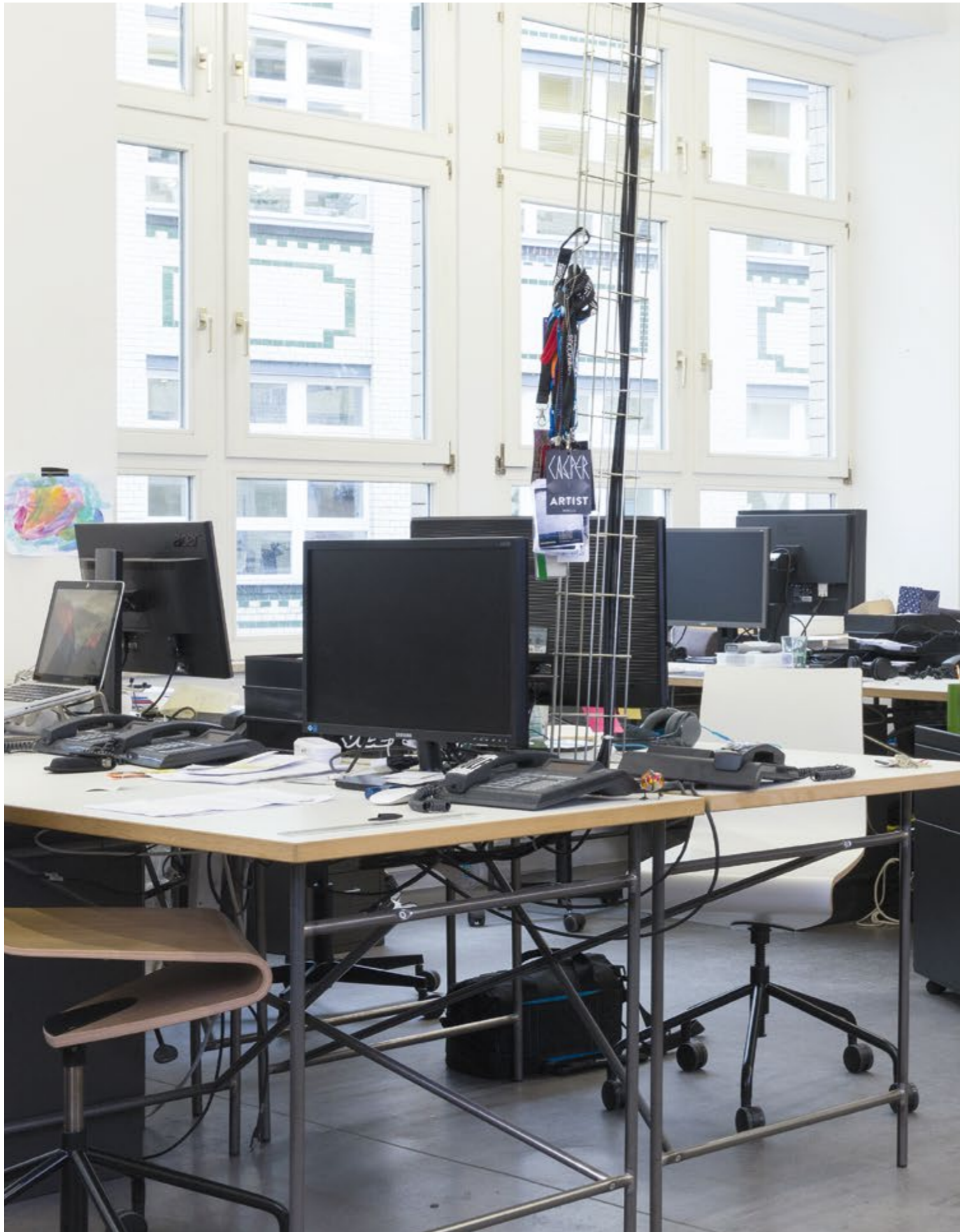
The folding-screen by Egon Eiermann was designed in 1968 for the foyer and the meeting rooms of the house of representatives of the German Bundestag in Bonn.

Name EIERMANN SCREEN  
Design Egon Eiermann



SCREEN AND  
ROOM DIVIDER





## OFFICE

An alternative to the standard office desk or a meeting point in the office kitchenette: this high table is a contemporary piece of furniture based on the construction principle of the Eiermann frame. Available with or without storage unit.

Name **MILLA** (Bar Table)  
Design Alexander Seifried





The multi-functional Eiermann table frame is not only a favourite for personal workplaces, but also provides the perfect discussion basis for meetings or conferences.

Name **EIERMANN 1**  
Design Egon Eiermann

STRONG AND STURDY:  
POWDER-COATED OR  
CHROME-PLATED ...





Design studio, Stuttgart



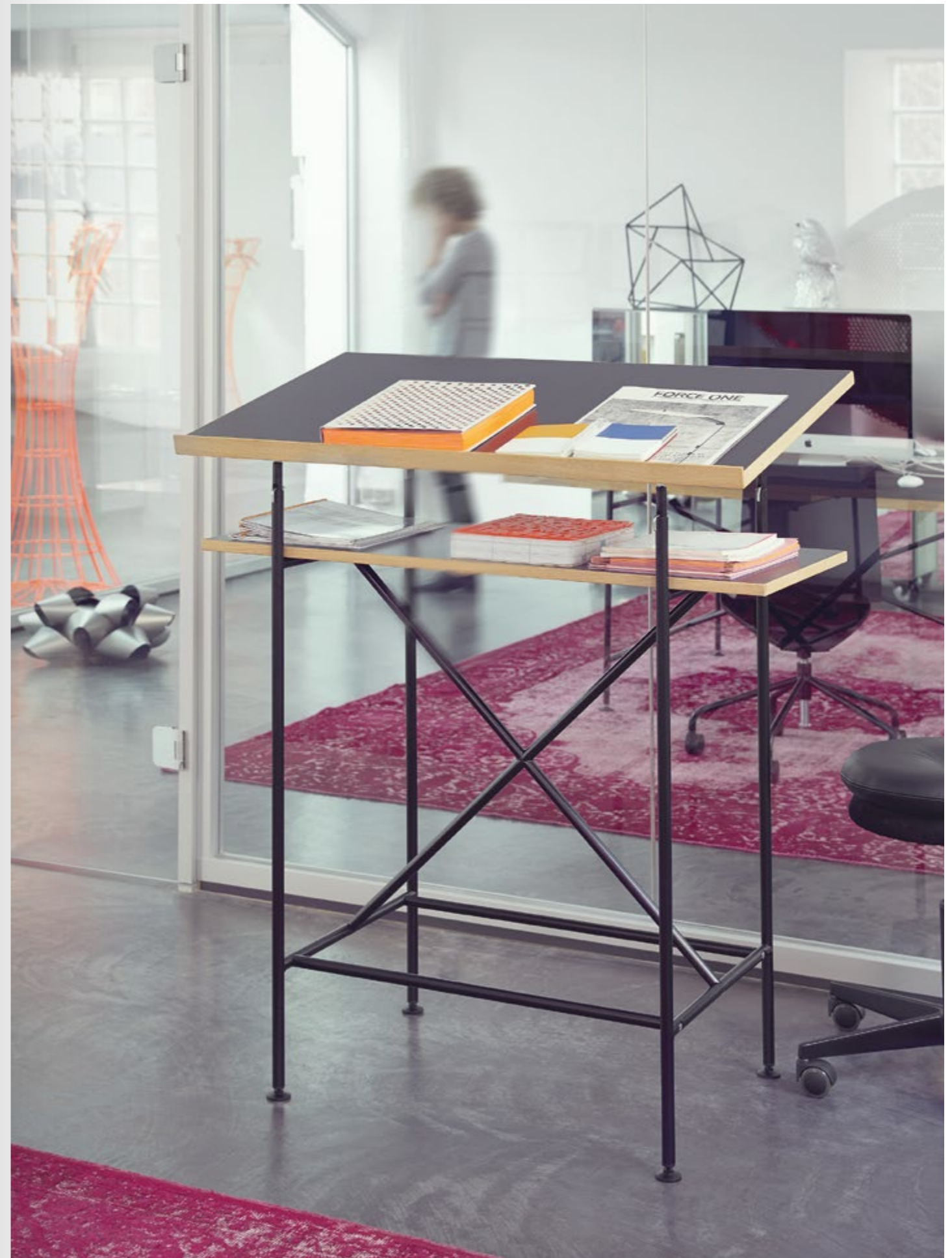




# OFFICE

A high desk changes the way we read, work or give presentations. The Milla high desk or lectern is based on the Eiermann frames. It's height-adjustable and the top can be fixed in a flat or inclined position.

Name **MILLA** (High Desk)  
Design Otto Sudrow





Media agency, Berlin





A perfect meeting of avant-garde and traditional upholstery. The forms of the chairs and sofas designed by Eric Degenhardt are constructed from individual planes, resulting in a compact, yet light, expression. This design stands out by virtue of its slender lines.

Name CUP  
Design Eric Degenhardt



EQUALLY REFINED:  
THE CHOICE OF FABRICS



## BAR/RESTAURANT

Designed Bauhaus trained Herbert Hirche and professor at the Academy of Art Stuttgart, this rattan chair creates a friendly and welcoming ambience and features a comfortable surprise: the backrest also serves as an armrest.

Name SANTA LUCIA  
Design Herbert Hirche







Each chair is unique – made from birch plywood moulded with dark phenolic resin. Multiple layers of the plywood are penetrated through circular milling. This makes the resin visible between the wooden layers and thus lends the chair its characteristic surfaces and unique look.

Name **PRATER CHAIR**  
Design Marco Dessì

AS UNIQUE AS  
THEIR OWNERS ...



BAR/RESTAURANT



LONGSTANDING  
BARROOM BUDDIES



# PRODUCTS

All our products are customisable.  
You can find a large range of  
materials and colourways at  
[www.richard-lampert.de](http://www.richard-lampert.de)

☂ = OUTDOOR-COLLECTION  
Also available for outdoor use.



**EIERMANN 1** Table Frame  
Egon Eiermann \_ 1953



**EIERMANN 2** Table Frame ☂  
Entwurf ca. 1965



**EIERMANN 3** Trestle ☂  
Alexander Seifried \_ 2015



**EIERMANN QUADRATISCH**  
Entwurf 2014



**MILLA** High Desk  
Otto Sudrow \_ 1988



**MILLA** Bar Table  
Alexander Seifried \_ 2013



**BOOK TABLE**  
Arik Levy \_ 2006



**STIJL** Table and Bench ☂  
Alexander Seifried \_ 2011/2012



**LUDWIG** Table and Bench ☂  
Alexander Seifried \_ 2007/2008



**FLIP** Folding Side Table ☂  
Alexander Seifried \_ 2007



**FLIP** Folding Sofa Table ☂  
Alexander Seifried \_ 2008



**FLIP** Folding Balcony & Dining Table ☂  
Alexander Seifried \_ 2008



**HOOK** Folding Table ☂  
Eric Degenhardt \_ 2011



**TABLE TOM** Side Table  
Alexander Seifried \_ 2012

# TABLES



# CHAIRS

☂ = OUTDOOR-COLLECTION  
Also available for outdoor use.



**PRATER CHAIR**  
Marco Dessí \_ 2009



**SANTA LUCIA** Rattan Chair ☂  
Herbert Hirche \_ 1969



**FROG** Chair  
Herbert Hirche \_ 1958



**MR. ROUND** Swivel Stool  
Alexander Seifried \_ 2015



**MR. SQUARE** Task | Work Chair  
Peter Horn \_ 2007



**SEESAW** Task | Work Chair  
Peter Horn \_ 1999/2000



**STIJL** Bench ☂  
Alexander Seifried \_ 2011/2012



# SHELVING



**ALU ALU** Wall Clock  
Jochen Gros \_ 1979



**SHELVING SYSTEM EIERMANN**  
Egon Eiermann \_ 1932



**FRAME** Shelving System  
Alexander Seifried \_ 2013



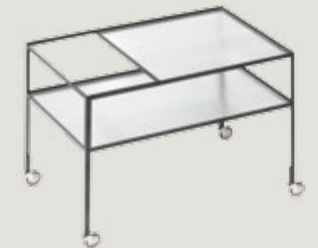
**ATELIER** Wall Shelf | Coat Rack  
Marco Dessí \_ 2012/2013



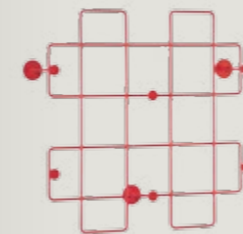
**STAK** Trolley  
Patrick Frey \_ 2011/2012



**UNIT** Occasional Furniture  
Eric Degenhardt \_ 2003



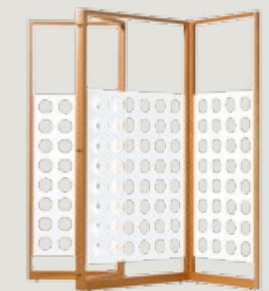
**HIRCHE** Trolley  
Herbert Hirche \_ 1956



**BAZAR** Coat Rack  
Steffen Kehrlé \_ 2015



**BAZAR** Coat Rack  
Steffen Kehrlé \_ 2015



**EIERMANN SCREEN**  
Egon Eiermann \_ 1968

# LOUNGE CHAIRS, SOFA

☂ = OUTDOOR-COLLECTION  
Also available for outdoor use.



**H 57 Chair**  
Herbert Hirche \_ 1957



**E10 Rattan Armchair** ☂  
Egon Eiermann \_ 1949



**LOUNGE CHAIR**  
Herbert Hirche\_ 1953



**TIE BREAK Chair** ☂  
Bertjan Pot \_ 2011



**IN-OUT Chair** ☂  
Eric Degenhardt \_ 2008



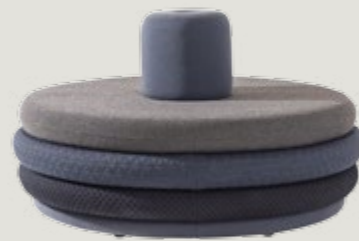
**CUP Chair and Sofa**  
Eric Degenhardt \_ 2007/2008



**FAT TOM Pouf**  
Alexander Seifried \_ 2013



**FAT TOM Pouf**  
Alexander Seifried \_ 2013



**ISLAND TOM Pouf**  
Alexander Seifried \_ 2013

# STOOLS, LOUNGER, BEDS



**LITTLE TOM Stool**  
Alexander Seifried \_ 2012



**BIG TOM Bar Stool**  
Alexander Seifried \_ 2012



**TOM Stackable Stool**  
Alexander Seifried \_ 2012



**E14 Rattan Stool** ☂  
Egon Eiermann \_ 1957



**MONO Stepstool**  
Steffen Kehrle \_ 2014



**PIP Seat**  
Daniel Kern \_ 2016



**DISH'S ISLAND Lounger** ☂  
Alexander Seifried \_ 2011



**LÖNNEBERGA Stacking Bed**  
Alexander Seifried \_ 2006/2007



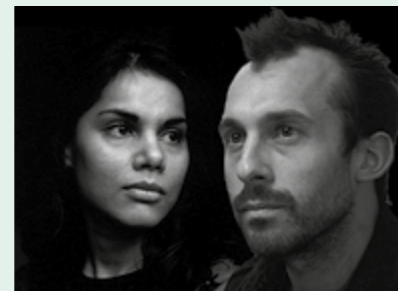
**MOONWALKER Solid Wood Bed**  
Katja Falkenburger \_ 2003



**ERIC DEGENHARDT**  
Hook, Cup, In-Out, Unit

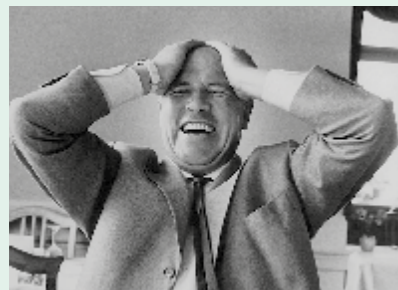


**MARCO DESSÍ**  
Prater Chair, Atelier



**DOSHI LEVIEN**  
Rocker

© David Vintiner



**EGON EIERMANN**  
Eiermann 1, Eiermann Regal, E10, E14, Eiermann Screen



**KATJA FALKENBURGER**  
Moonwalker

© Thorsten Schmidt



**MONICA FÖRSTER**  
Wonderbox



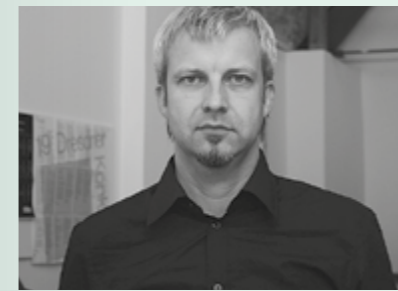
**PATRICK FREY**  
Stak



**JOCHEN GROS**  
Alu Alu



**HERBERT HIRCHE**  
Santa Lucia, Lounge Chair, H 57, Hirche Trolley



**PETER HORN**  
Seesaw, Mr. Square, Turtle, Fixx



**DANIEL KERN**  
Pip

© Lee Gibson, New York



**STEFFEN KEHRLE**  
Bazar, Mono

© Julian Baumann



**ARIK LEVY**  
Book Table

© Arik Levy 2013, photo Daniele de Carolis



**BERTJAN POT**  
Tie Break, Pit Stop



**ALEXANDER SEIFRIED**  
Stijl, Familie Tom, Flip, Frame, Ludwig, Lönneberga, Milla, Dish's Island, Mash, Mr. Round, Familie Garage, Eiermann 3



**OTTO SUDROW**  
Milla, Compagnons

In 1993, Richard Lampert founded his company, based in the German city of Stuttgart, with the aim of producing innovative and versatile furniture for everyday use. High-quality craftsmanship, superb design and sustainability are the qualities that define each of Richard Lampert's products. The collection ranges from classic pieces by designers such as Egon Eiermann and Herbert Hirche to modern, multiple award-winning design icons and to often unconventional products by international designers, all the while following the maxim: >as little as possible, as much as necessary<. The Richard Lampert collection does not just focus on one single category, but spans the most diverse fields, such as indoor and outdoor furniture, furniture for both adults and children, as well as home and office furnishings. The overarching factor defining the whole portfolio is a passion for implementing design ideas with total dedication and realism, paired with the aim of giving each product its individual >soul<. The result are timeless, high-end products with a twist: the Richard Lampert collection. This ambitious approach often poses great challenges in terms of getting a design right for serial production. It needs a dedicated and committed team to successfully market these special pieces of furniture that contribute to creating wellbeing and comfort at home and at the workplace.



artwork: i-dbuero.de | photos on location: Peter Schumacher, Vlado Golup, Grey Hutten | product photos: Richard Becker | styling: Sabine Heck

#### **RICHARD LAMPERT**

Richard Lampert  
GmbH & Co KG

Gaisburgstraße 12 b  
D 70182 Stuttgart

T +49 (0) 711 860 20 70  
F +49 (0) 711 860 20 720

[www.richard-lampert.de](http://www.richard-lampert.de)  
[mail@richard-lampert.de](mailto:mail@richard-lampert.de)

Our furniture is used to provide comfort and create the right ambience for example at:

ADIDAS, Herzogenaurach

Architectural Studios: HERZOG DE MEURON,

OLGIATI, GMP and many more

STIFTUNG BAUHAUS, Dessau

COLLEGE OF ART AND ARCHITECTURE, Dundee, GB

ERMENEGILDO ZEGNA Headquarters, Italy

GOOGLE Headquarters, London

MAX-PLANCK-INSTITUTE

KORTIJK TOWN HALL, Belgium

TATE MODERN & LABAN CENTER, London

TU BERLIN and TU STUTTGART

SAP, Walldorf

NESTLÉ SCHWEIZ Development Centre

BOZEN UNIVERSITY

VILLA MASSIMO, Rome

CULTURAL CENTRE, Paris

VICE, Berlin

PUBLICIS PIXELPARK

DAIMLER-BENZ, Stuttgart

# Inspired?