



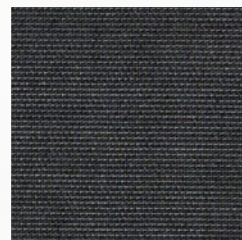
FABRICS & MESHES

Sunbrella Meshes & Fabrics in Stock

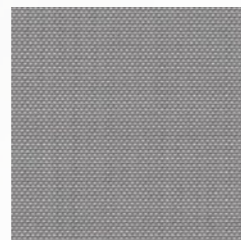
MESHES



Sunbrella
Sling Odyssey
5928 0043
AUGUSTINE DENIM



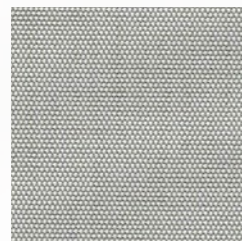
Sunbrella
Sling Odyssey
SLI 50045 18 137
LOGAN GRAPHITE



Sunbrella
Sling Odyssey
SLI 5928 44 137
AUGUSTINE SILVER

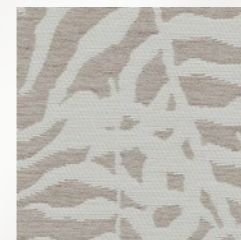


Sunbrella
Sling Odyssey
SLI 50045 06 137
LOGAN SAND

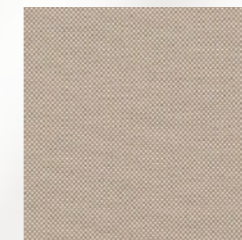


Sunbrella
Sling Odyssey
SLI 50143 10 137
SAILING SEAGULL

FABRICS



Sunbrella
Bahia Ikebana
IKE J 369 140
Uyuni
Class: E



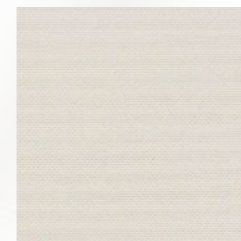
Sunbrella
Odyssey Natte
NAT 10150 140
Taupe Chalk
Class: C



Sunbrella
Odyssey Solids &
Stripes
SJA 3756 137
Lead Chine
Class: C



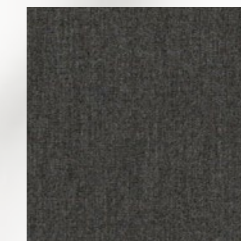
Sunbrella
Odyssey Solids &
Stripes
SJA 3965 137
Blush
Class: C



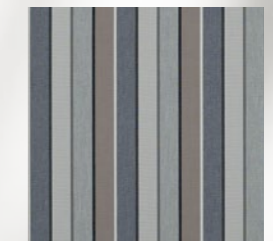
Sunbrella
Odyssey Natte
NAT 10020 140
White
Class: C



Sunbrella
Odyssey Solids &
Stripes
SJA 3729 137
Taupe
Class: C



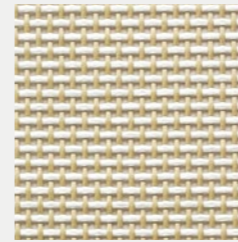
Sunbrella
Odyssey Solids &
Stripes
SJA 3757 137
Flanelle
Class: C



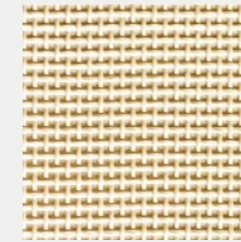
Sunbrella
Odyssey Solids &
Stripes
SJA 3778 137
Quadri Grey
Class: C

PHIFERTEX

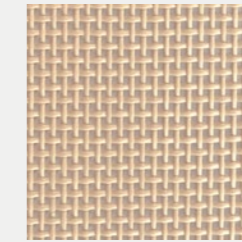
PHIFERTEX



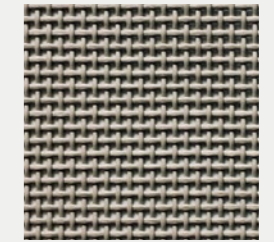
PHF 5110



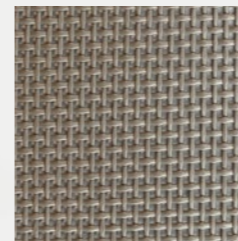
PHF 5029



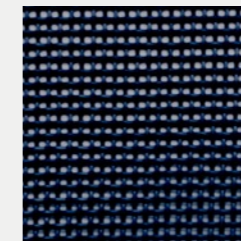
PHF 5013



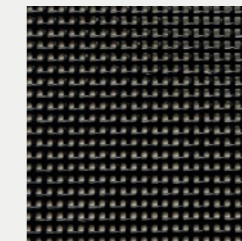
PHF 5014



PHF 5003



PHF 5006



PHF 5005

Choose the mesh upholstery for the aluminum frame. Both options are mesh and included in retail price.

Phifertex offers excellent performance while withstanding spills, splatters and the hustle and bustle of high-traffic areas. Features wider mesh holes, resulting in a slightly transparent look.

MESH



PHIFER INCORPORATED TEXTILE LAB

TECHNICAL INFORMATION

CHARACTERISTIC	REFERENCE	NOMINAL RESULTS	
	TEST METHOD	WARP	FILL
MESH (ends/inch)	ASTM D 3775	15	15
YARN DIAMETER (inch)	TMS-TM-001	0,0267	0,0265
ENSILE STRENGTH A) CUT STRIP METHOD (lb) B) GRAB METHOD (lb)	ASTM D 5035 ASTM D 5034	259 314	266 336
TEARING STRENGTH TRAPEZOID METHOD (lb)	ASTM D 5587	77	84
STIFFNESS (mg)	ASTM D 3656	309	329
STRETCH (%) SET (%)	TMS-TM-002	1,8 0,1	2,8 0,1
MESH WEIGHT (oz/sq yd)	ASTM D 3776	12,46	
FABRIC THICKNESS (inch)	ASTM D 1777	0,031	
BOND STRENGTH (lb)	CS 248-64(5.5)	63	
OPENNESS/TRANSMITTANCE (%)	17	26,42	
MULLEN BURSTING STRENGTH(psi) Initial	FS L-S-125B(4.4.7)	>600	
COLORFASTNESS TO 1200HRS Color Change According to AATCC Gray Scale	ASTM G154	5	

*Results above are based on one test specimen, therefore, no specification has been established and this document can not be used as certification to any specification.



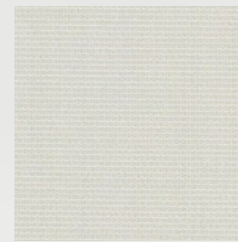
DURABILITY/CLEANABILITY	Functional and durable, Phifertex fabrics offer excellent performance while withstanding spills, splatters and the hustle and bustle of high traffic areas. These fabrics are easy to maintain – easily cleaned with soap and water or 50/50 bleach to water solution.
WARRANTY	Phifer offers a 3-year limited warranty for Phifertex Outdoor Fabrics. This warranty covers the Phifertex Plus Slingable Fabrics fabric becoming non-functional due to loss of dimensional stability from exposure to conditions including sunlight, mildew, rot and normal atmospheric conditions. The warranty does not cover damage to the fabric from any source nor does it cover gradual fading or discoloration from atmospheric pollution or other debris. This warranty remains in effect for 3 years from the date of purchase. Phifer will provide new fabric, free of charge, to replace the non-functioning fabric. This warranty does not cover the cost of labor or other consequential or incidental expenses.
GREENGUARD	GREENGUARD Certification ensures products have met some of the world's most rigorous and comprehensive standards for low emissions of volatile organic compounds (VOCs) into indoor air. Phifer was the first manufacturer in the outdoor fabric industry to achieve GREENGUARD certification. Certification is completely voluntary and ensures that the highest industry standards are being applied to maintain indoor air quality for the health and safety of building occupants.
MICROBAN	Phifertex fabrics are the only outdoor furniture fabrics in the world to include Microban protection. Microban antimicrobial protection works continuously to inhibit the growth of bacteria, mold and mildew that can cause stains, odors and product deterioration. <ul style="list-style-type: none"> • Microban antimicrobial protection is infused into Phifertex fabrics for lasting protection that won't wash off or wear away for the lifetime of the product. • Phifertex fabrics infused with Microban antimicrobial technology are ideal for any commercial or residential environment where microbes are a concern, including healthcare, hospitality, home, office, schools and institutions.
FLAME RETARDANCE	<ul style="list-style-type: none"> • National Fire Protection Association, NFPA No. 101, "Life Safety Code", Class "A" rating. (Tested in accordance to ASTM E84, Surface Burning Characteristics of Building Material.) 17x11 (ASTM E84-16), 25x25 (ASTM E84-15b), 37x15 (ASTM E84-16), Plus (ASTM E84-15b) • International Building Code (IBC), Section 803.1.1, Class "A" rating (Tested in accordance to ASTM E84). • Upholstered Furniture Action Council Fabric Classification Test Method 1990 (UFAC) - Class "1" Rating. • Federal Motor Vehicles Safety Standards, Section 571.302, Standard Number 302 (FMVSS 302), Flammability of Interior Materials. • California Technical Bulletin 117-2013, Section 1, Cover Fabric Test.

CERTIFICATIONS



SUNBRELLA
SLING
ODYSSEY

SLING - ODYSSEY



SLI 50045 07 137
LOGAN SNOWY



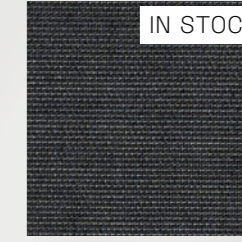
IN STOCK

SLI 50143 10 137
SAILING SEAGULL



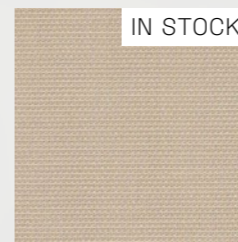
IN STOCK

SLI 5928 44 137
AUGUSTINE SILVER



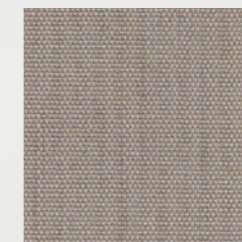
IN STOCK

SLI 50045 18 137
LOGAN GRAPHITE



IN STOCK

SLI 50045 06 137
LOGAN SAND



SLI 50143 19 137
SAILING SPACE



SLI 50045 02 137
LOGAN TAUPE



IN STOCK

5928 0043
AUGUSTINE DENIM





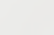
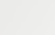
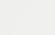
Choose the mesh upholstery for the aluminum frame. Both options are mesh and included in retail price.

Focusing on subtle patterns that read as textures, Sunbrella Sling allows you to achieve an elevated indoor aesthetic in an outdoor setting. Sunbrella Sling blends the strength of PVC with the softness of Sunbrella acrylic yarn for added comfort. Sunbrella Sling is ideal for crafting fully-upholstered furniture pieces for outdoor patios and other traditional sling applications.

MESH

SLING - ODYSSEY

PRODUCT SPECIFICATIONS

	STANDARDS NORMES	SLING AUGUSTINE	SLING LOGAN	SLING SAILING
INFO		20% Sunbrella Acrylic, 80% PES - PVC 54" / 137 cm width Selvedge is Left / Right	58.8% Sunbrella® Non-Phthalate PVC, 22.1% Sunbrella® Polyester, 19.1% Sunbrella® Acrylic 54" / 137 cm width Selvedge is Left / Right	47.2% Sunbrella® Non-Phthalate PVC, 35% Sunbrella® Acrylic, 17.8% Sunbrella® Polyester 54" / 137 cm width Selvedge is Left / Right
VARRANTY		We stand behind our fabrics with a guarantee that's best in the industry: a 5-year limited warranty for upholstery fabrics, specialty fabrics and decorative shade fabrics.		
HOW TO CLEAN		For easy day-to-day maintenance of your Sunbrella fabric: 1-Brush off loose dirt before it becomes embedded 2-Wipe up spills as soon as they occur, and spot-clean fabric before stains set.		
ZERO LANDFILL		 For over 30 years, Sunbrella® has recycled its industrial wastes such as yarn and packaging. Today, every Sunbrella® manufacturing facility around the globe sends absolutely no waste to the landfill.		
COMPOSITION		11% Sunbrella® Acrylic 25% Polyester 64% PVC	19% Sunbrella® Acrylic 22% Polyester 59% PVC	35% Sunbrella® Acrylic 17.8% Polyester 47.2% PVC
FINISH		Water-Repellent & Stain-Proof		
MINIMUM USEFULL WIDTH	EN 1773	137		
WEIGHT	ISO 3801 g/sqm - g/m²	505	480	580
ROLL LENGTH	LM - ML	40		
SPRAY TEST	ISO 4920 Class/5	-		
COLOUR FASTNESS UV INDOOR	ISO 105B02 Class/8	8		
COLOUR FASTNESS TO WEATHER OUTDOOR	ISO 105B04 - 1000 H Class / 5	4-5		
WASH COLOUR FASTNESS 30°C	ISO 105C06 Class/5	5		
COLOUR FASTNESS DRY FRICTION	ISO 105X12 Class/5	5		
COLOUR FASTNESS WET FRICTION	ISO 105X12 Class/5	5		
CARE INSTRUCTIONS		      Ironing reinforces the treatment		

Cleaning
Vacuum regularly. Wipe with a damp cloth using soap and water or use proprietary upholstery shampoo. For deeper cleaning use bleach or alcohol.



CERTIFICATIONS

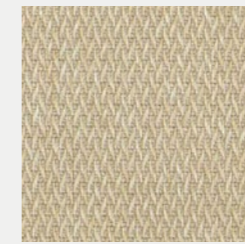


LIVIO

LIVIO



01



03



04



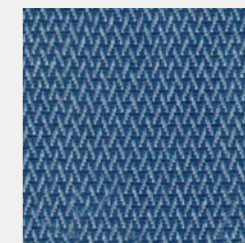
12



08



22



21



26



27



28

Livio comes in a range of 10 colours and creates a unique reflection of neutral backgrounds with crosswise yarns.

Class A



TECNICAL CHARACTERISTIC

QUALITY NAME		LIVIO
WIDTH		140 CM +/- 1 CM
WEIGHT		355 GR/M²
COMPOSITION		% 100 OLEFIN
TEST		STANDARD
PILLING		EN ISO 12945-2 : 2000 (5000 revs)
SEAM SLIPPAGE	WEFT	13936-2 : 2004
	WARP	
ABRASSION		EN ISO 12945-2 : 1998
COLOR	RUBBING	BS EN 105-X12 : 2001
	DRY	
	WET	4-5
LIGHT		BS EN 105-B02 : 1994
OIL REPELLENCY		ISO EN 14419
SPRAY TEST		BS EN ISO 1920
FLAMMIBILITY		EN ISO 1021-1
ANTI BACTERIAL		LIS L 1902

COLOR RESISTANCE

FASTNESS TO	STANDARD	Varies according to the value written next to the product name			
		LOD	OD	OD+	OD++
LIGHT	BS EN ISO 105-B02	7	7	7/8	8
WEATHERING	BS EN ISO 105-B04	6	6/7	7	7/8
UV	ASTM G-154 (1200 Hours)	4	4	4/5	5
WASHING	BS EN ISO 105-C06 40 C	4/5			
SEA WATER	BS EN ISO 105-E02	4/5			
POOL WATER	BS EN ISO 105-E03	4/5			
RUBBING	BS EN ISO 105-X12	4/5			

CARE AND MAINTANCE INSTRUCTIONS

- 1- Remove any residual soil by lightly brushing or scraping the stain by sponging down with water
 - 2- If further cleaning needed, apply a solution with soap an water.
Work the solution into stain by lightly scrubbing the area with sponge or very soft bristle brush
 - 3- Remove cleaning solutions with a clean soft towel or sponge to remove the stain and excess cleaning solution.
[Repeat step 2 and 3 until stain is removed.]
 - 4- Rinse the affected are throughly remove cleaning solution from the fabric
- Vacuum the fabric prior to cleaning
- Do not be alarmed if stain is not removed after first application and removal of cleaning solution
- If the fabric can be removed from furniture it may be cleaned in a mild soap and warm water (40 C°) solution in washing machine and dried in an environment also less then 40 C°.
- Do not steam press or dry in electric or gas dryers. Allow fabric to be air dried naturally

REMARKS

Do not leave your product after 50 C° outside temperature under directly sunlight

Results can be vary region by region

The values for the products my have a varition of +/- %5

Art Picture is for indoor use only

MIRELLA

MIRELLA



01



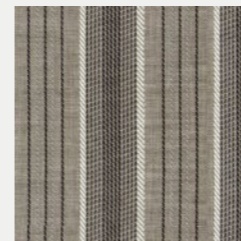
09



24



23



25

Mirella comes with 5 different compositions of thin and thick stripes. This mix is ideal to create out of the ordinary outdoor spaces.

Class A



TECNICAL CHARACTERISTIC

QUALITY NAME		MIRELLA
WIDTH		140 CM +/- 1 CM
WEIGHT		206 GR/M²
COMPOSITION		% 100 OLEFIN
TEST		STANDARD
PILLING		EN ISO 12945-2 : 2000 (5000 revs) 4
SEAM SLIPPAGE	WEFT	13936-2 : 2004 2,5 mm
	WARP	
ABRASSION		EN ISO 12945-2 : 1998 13.000
COLOR	RUBBING	BS EN 105-X12 : 2001 4-5
	DRY	
	WET	7-8
OIL REPELLENCY		ISO EN 14419 3
SPRAY TEST		BS EN ISO 1920 4-5
FLAMMIBILITY		EN ISO 1021-1 Pass
ANTI BACTERIAL		LIS L 1902 Pass

COLOR RESISTANCE

FASTNESS TO	STANDARD	Varies according to the value written next to the product name			
		LOD	OD	OD+	OD++
LIGHT	BS EN ISO 105-B02	7	7	7/8	8
WEATHERING	BS EN ISO 105-B04	6	6/7	7	7/8
UV	ASTM G-154 (1200 Hours)	4	4	4/5	5
WASHING	BS EN ISO 105-C06 40 C	4/5			
SEA WATER	BS EN ISO 105-E02	4/5			
POOL WATER	BS EN ISO 105-E03	4/5			
RUBBING	BS EN ISO 105-X12	4/5			

CARE AND MAINTANCE INSTRUCTIONS

- 1- Remove any residual soil by lightly brushing or scraping the stain by sponging down with water
 - 2- If further cleaning needed, apply a solution with soap an water. Work the solution into stain by lightly scrubbing the area with sponge or very soft bristle brush
 - 3- Remove cleaning solutions with a clean soft towel or sponge to remove the stain and excess cleaning solution. (Repeat step 2 and 3 until stain is removed.)
 - 4- Rinse the affected are throughly remove cleaning solution from the fabric
- Vacuum the fabric prior to cleaning
- Do not be alarmed if stain is not removed after first application and removal of cleaning solution
- If the fabric can be removed from furniture it may be cleaned in a mild soap and warm water (40 C°) solution in washing machine and dried in an environment also less then 40 C°.
- Do not steam press or dry in electric or gas dryers. Allow fabric to be air dried naturally

REMARKS

Do not leave your product after 50 C° outside temperature under directly sunlight

Results can be vary region by region

The values for the products my have a varition of +/- %5

Art Picture is for indoor use only

NARIO

Nario has a range of 8 different colours that create a beautiful harmony when combined together in outdoor spaces.

Class A

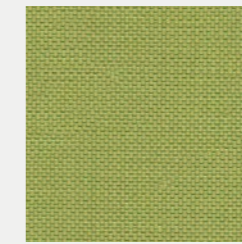
NARIO



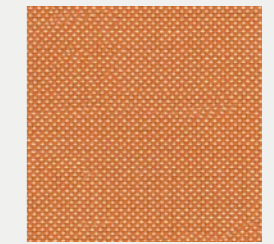
01



100



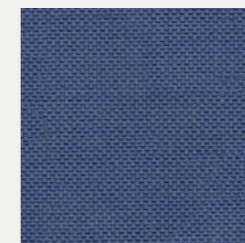
18



15



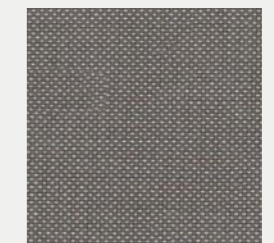
32



28



33



34



TECNICAL CHARACTERISTIC

QUALITY NAME		NARIO	
WIDTH		140 CM +/- 1 CM	
WEIGHT		263 GR/M²	
COMPOSITION		% 100 OLEFIN	
TEST		STANDARD	
PILLING		EN ISO 12945-2 : 2000 (5000 revs)	4-5
SEAM SLIPPAGE	WEFT	13936-2 : 2004	4,8 mm
	WARP		4,6 mm
ABRASSION		EN ISO 12945-2 : 1998	23.000
COLOR	RUBBING	BS EN 105-X12 : 2001	4-5
	WET		4-5
	LIGHT	BS EN 105-B02 : 1994	7-8
OIL REPELLENCY		ISO EN 14419	3
SPRAY TEST		BS EN ISO 1920	4-5
FLAMMIBILITY		EN ISO 1021-1	Pass
ANTI BACTERIAL		LIS L 1902	Pass

COLOR RESISTANCE

FASTNESS TO	STANDARD	Varies according to the value written next to the product name			
		LOD	OD	OD+	OD++
LIGHT	BS EN ISO 105-B02	7	7	7/8	8
WEATHERING	BS EN ISO 105-B04	6	6/7	7	7/8
UV	ASTM G-154 (1200 Hours)	4	4	4/5	5
WASHING	BS EN ISO 105-C06 40 C	4/5			
SEA WATER	BS EN ISO 105-E02	4/5			
POOL WATER	BS EN ISO 105-E03	4/5			
RUBBING	BS EN ISO 105-X12	4/5			

CARE AND MAINTANCE INSTRUCTIONS

- 1- Remove any residual soil by lightly brushing or scraping the stain by sponging down with water
 - 2- If further cleaning needed, apply a solution with soap an water.
Work the solution into stain by lightly scrubbing the area with sponge or very soft bristle brush
 - 3- Remove cleaning solutions with a clean soft towel or sponge to remove the stain and excess cleaning solution.
[Repeat step 2 and 3 until stain is removed.]
 - 4- Rinse the affected are throughly remove cleaning solution from the fabric
- Vacuum the fabric prior to cleaning
- Do not be alarmed if stain is not removed after first application and removal of cleaning solution
- If the fabric can be removed from furniture it may be cleaned in a mild soap and warm water (40 C°) solution in washing machine and dried in an environment also less then 40 C°.
- Do not steam press or dry in electric or gas dryers. Allow fabric to be air dried naturally

REMARKS

Do not leave your product after 50 C° outside temperature under directly sunlight

Results can be vary region by region

The values for the products my have a varition of +/- %5

Art Picture is for indoor use only

TELMA

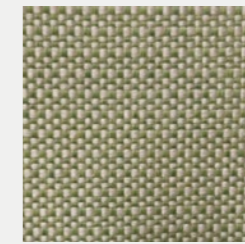
TELMA



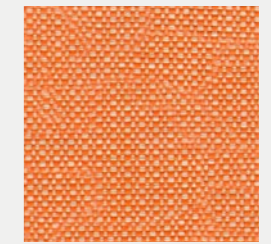
101



103



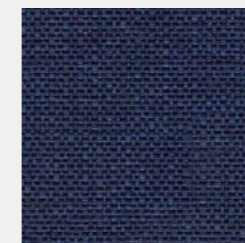
15



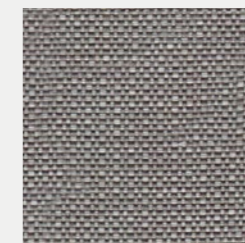
108



122



22



126



128

Telma has a range of 8 solid colours and reflects the beautiful effect of two-coloured linen weaving.

Class A



TECNICAL CHARACTERISTIC

QUALITY NAME		TELMA
WIDTH		140 CM +/- 1 CM
WEIGHT		343 GR/M²
COMPOSITION		% 100 OLEFIN
TEST		STANDARD
PILLING		EN ISO 12945-2 : 2000 (5000 revs)
SEAM SLIPPAGE	WEFT	13936-2 : 2004
	WARP	
ABRASSION		EN ISO 12945-2 : 1998
COLOR	RUBBING	BS EN 105-X12 : 2001
	DRY	
	WET	4-5
LIGHT		BS EN 105-B02 : 1994
OIL REPELLENCY		ISO EN 14419
SPRAY TEST		BS EN ISO 1920
FLAMMIBILITY		EN ISO 1021-1
ANTI BACTERIAL		LIS L 1902

COLOR RESISTANCE

FASTNESS TO	STANDARD	Varies according to the value written next to the product name			
		LOD	OD	OD+	OD++
LIGHT	BS EN ISO 105-B02	7	7	7/8	8
WEATHERING	BS EN ISO 105-B04	6	6/7	7	7/8
UV	ASTM G-154 (1200 Hours)	4	4	4/5	5
WASHING	BS EN ISO 105-C06 40 C	4/5			
SEA WATER	BS EN ISO 105-E02	4/5			
POOL WATER	BS EN ISO 105-E03	4/5			
RUBBING	BS EN ISO 105-X12	4/5			

CARE AND MAINTANCE INSTRUCTIONS

- 1- Remove any residual soil by lightly brushing or scraping the stain by sponging down with water
 - 2- If further cleaning needed, apply a solution with soap an water.
Work the solution into stain by lightly scrubbing the area with sponge or very soft bristle brush
 - 3- Remove cleaning solutions with a clean soft towel or sponge to remove the stain and excess cleaning solution.
(Repeat step 2 and 3 until stain is removed.)
 - 4- Rinse the affected are throughly remove cleaning solution from the fabric
- Vacuum the fabric prior to cleaning
- Do not be alarmed if stain is not removed after first application and removal of cleaning solution
- If the fabric can be removed from furniture it may be cleaned in a mild soap and warm water (40 C°) solution in washing machine and dried in an environment also less then 40 C°.
- Do not steam press or dry in electric or gas dryers. Allow fabric to be air dried naturally

REMARKS

Do not leave your product after 50 C° outside temperature under directly sunlight

Results can be vary region by region

The values for the products my have a varition of +/- %5

Art Picture is for indoor use only

VERO

VERO



101



01



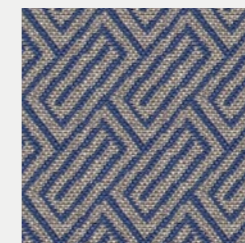
10



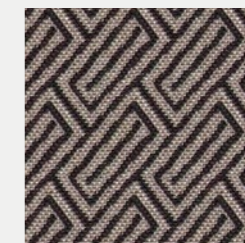
109



24



23



25

Vero comes in a range of 7 different colours and has a holistic design understanding together with modern patterns and glossy, elegant look.

Class A



TECNICAL CHARACTERISTIC

QUALITY NAME		VERO	
WIDTH		140 CM +/- 1 CM	
WEIGHT		318 GR/M²	
COMPOSITION		% 100 OLEFIN	
TEST		STANDARD	
PILLING		EN ISO 12945-2 : 2000 (5000 revs)	4
SEAM SLIPPAGE	WEFT	13936-2 : 2004	5,5 mm
	WARP		3,1 mm
ABRASSION		EN ISO 12945-2 : 1998	18.000
COLOR	RUBBING	BS EN 105-X12 : 2001	4-5
	DRY		4-5
	WET	7-8	
OIL REPELLENCY		ISO EN 14419	3
SPRAY TEST		BS EN ISO 1920	4-5
FLAMMIBILITY		EN ISO 1021-1	Pass
ANTI BACTERIAL		LIS L 1902	Pass

COLOR RESISTANCE

FASTNESS TO	STANDARD	Varies according to the value written next to the product name			
		LOD	OD	OD+	OD++
LIGHT	BS EN ISO 105-B02	7	7	7/8	8
WEATHERING	BS EN ISO 105-B04	6	6/7	7	7/8
UV	ASTM G-154 (1200 Hours)	4	4	4/5	5
WASHING	BS EN ISO 105-C06 40 C	4/5			
SEA WATER	BS EN ISO 105-E02	4/5			
POOL WATER	BS EN ISO 105-E03	4/5			
RUBBING	BS EN ISO 105-X12	4/5			

CARE AND MAINTANCE INSTRUCTIONS

- 1- Remove any residual soil by lightly brushing or scraping the stain by sponging down with water
 - 2- If further cleaning needed, apply a solution with soap an water.
Work the solution into stain by lightly scrubbing the area with sponge or very soft bristle brush
 - 3- Remove cleaning solutions with a clean soft towel or sponge to remove the stain and excess cleaning solution.
(Repeat step 2 and 3 until stain is removed.)
 - 4- Rinse the affected are throughly remove cleaning solution from the fabric
- Vacuum the fabric prior to cleaning
- Do not be alarmed if stain is not removed after first application and removal of cleaning solution
- If the fabric can be removed from furniture it may be cleaned in a mild soap and warm water (40 C°) solution in washing machine and dried in an environment also less then 40 C°.
- Do not steam press or dry in electric or gas dryers. Allow fabric to be air dried naturally

REMARKS

Do not leave your product after 50 C° outside temperature under directly sunlight

Results can be vary region by region

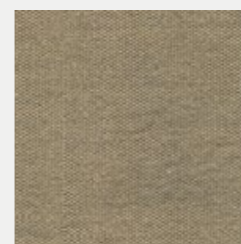
The values for the products my have a varition of +/- %5

Art Picture is for indoor use only

PLAIN MELANGE

Water-repellent fabric with anti-stain and anti-mould treatment, high colour fastness and resistance to sunlight exposure. Plain Melange is characterised by its design, fineness, and the soft touch. It can be used in- and outdoor.

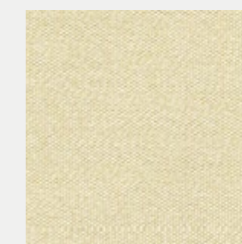
PLAIN MELANGE



016



018



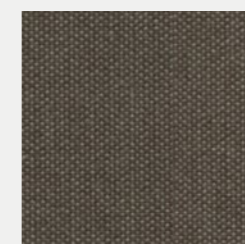
020



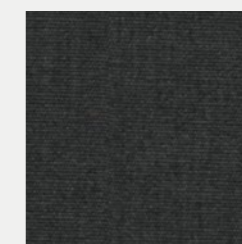
070



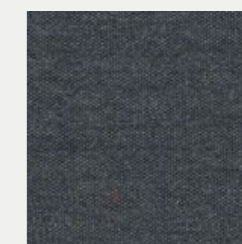
072



079



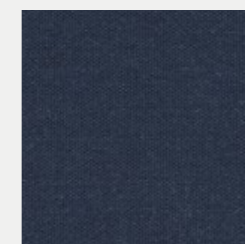
583



690



693



694



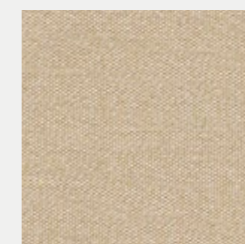
783



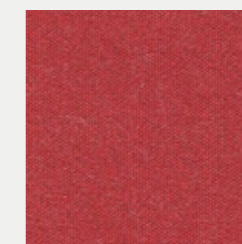
833



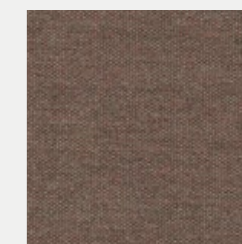
834



835



870



872



874



875



876



879



882

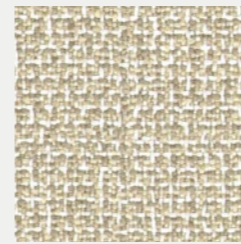


PRODUCT SPECIFICATIONS

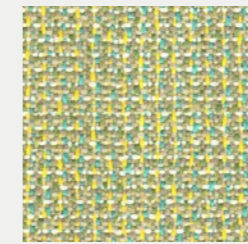
TIPOLOGY	100% solution dyed acrylic outdoor fabric.
CHARACTERISTICS	Water-repellent fabric with anti-stain and anti-mould treatment, high colour fastness and resistant to sunlight exposure. The fabric is characterised by its design and fineness, by the soft touch and can be used in- and outdoor.
APPLICATIONS	Indoor and outdoor furniture: upholstery, cushions, draperies sheers. Suitable also for marine upholstery.
WARRANTY	Irisun Living fabrics are guaranteed for 5 years concerning the UV resistance and the colour fastness. The warranty is valid in case of respect of the application of the fabric and of the instructions for care and cleaning.
FEATURES	Uv Rays Protection Shield
	Water Repellent Stain Resistant Mildew Resistant
	Breathable Fearless Fabric
	Bleach Cleanable Fade Resistant
WIDTH	137 cm
ROLL LENGTH	30 m
WEIGHT	240 gr/m ²
MARTINDALE	15000 cycles
OIL-REPELLENCY	5 off 8
SPRAY TEST	5 off 5
UV COLOUR FASTNESS	7 off 8
COLOUR FASTNESS TO WEATHER	7 off 8
COLOUR FASTNESS AFTER WASHING AT 40 C	5 off 5
FLAME RESISTANCE	CAL TB 117 - 2013 Section 1
FLAME RESISTANCE	Indoor and outdoor furniture: upholstery, cushions, draperies e sheers. Suitable also for marine upholstery.
TOLERANCE	±5%
BIOCIDES	It contains biocidal agent with approved active substances: Octyl Isothiazolinone

MATTEO

MATTEO



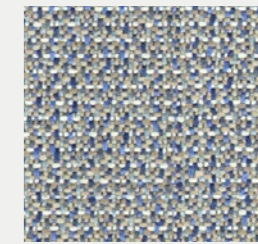
01



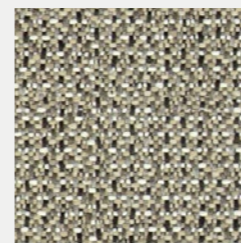
10



09



24



25

Matteo has a range of 5 living colours and creates an energetic contrast between sparkles of colours and backgrounds.

CLASS B



TECNICAL CHARACTERISTIC

QUALITY NAME		MATTEO	
WIDTH		140 CM +/- 1 CM	
WEIGHT		463 GR/M²	
COMPOSITION		% 100 OLEFIN	
TEST		STANDARD	
PILLING		EN ISO 12945-2 : 2000 (5000 revs)	5
SEAM SLIPPAGE	WEFT	13936-2 : 2004	3,5 mm
	WARP		2,5 mm
ABRASSION		EN ISO 12945-2 : 1998	28.000
COLOR	RUBBING	BS EN 105-X12 : 2001	4-5
	DRY		4-5
	WET	7-8	
OIL REPELLENCY		ISO EN 14419	3
SPRAY TEST		BS EN ISO 1920	4-5
FLAMMIBILITY		EN ISO 1021-1	Pass
ANTI BACTERIAL		LIS L 1902	Pass

COLOR RESISTANCE

FASTNESS TO	STANDARD	Varies according to the value written next to the product name			
		LOD	OD	OD+	OD++
LIGHT	BS EN ISO 105-B02	7	7	7/8	8
WEATHERING	BS EN ISO 105-B04	6	6/7	7	7/8
UV	ASTM G-154 (1200 Hours)	4	4	4/5	5
WASHING	BS EN ISO 105-C06 40 C	4/5			
SEA WATER	BS EN ISO 105-E02	4/5			
POOL WATER	BS EN ISO 105-E03	4/5			
RUBBING	BS EN ISO 105-X12	4/5			

CARE AND MAINTANCE INSTRUCTIONS

- 1- Remove any residual soil by lightly brushing or scraping the stain by sponging down with water
 - 2- If further cleaning needed, apply a solution with soap an water.
Work the solution into stain by lightly scrubbing the area with sponge or very soft bristle brush
 - 3- Remove cleaning solutions with a clean soft towel or sponge to remove the stain and excess cleaning solution.
[Repeat step 2 and 3 until stain is removed.]
 - 4- Rinse the affected are thoroughly remove cleaning solution from the fabric
- Vacuum the fabric prior to cleaning
- Do not be alarmed if stain is not removed after first application and removal of cleaning solution
- If the fabric can be removed from furniture it may be cleaned in a mild soap and warm water (40 C°) solution in washing machine and dried in an environment also less then 40 C°.
- Do not steam press or dry in electric or gas dryers. Allow fabric to be air dried naturally

REMARKS

Do not leave your product after 50 C° outside temperature under directly sunlight

Results can be vary region by region

The values for the products my have a varition of +/- %5

Art Picture is for indoor use only

SUNBRELLA

SOLIDS & STRIPES

ODYSSEY

Solids is the standard classic fabric in our collection. It comes in a range of 50 colours with ottoman, piqué and chiné effects to create a bespoke look. Available in three iconic strips and highly resistant, Solids are adapted to any use.

CLASS C

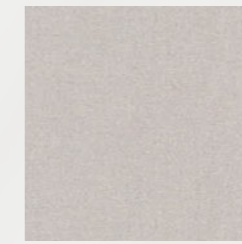
SOLIDS & STRIPES - ODYSSEY



SJA 5404 137
NATURAL



SJA 3966 137
MARBLE



SJA 3741 137
SILVER GREY



SJA 5453 137
CANVAS



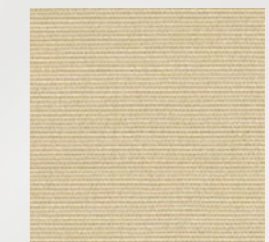
SJA 3780 137
LIN



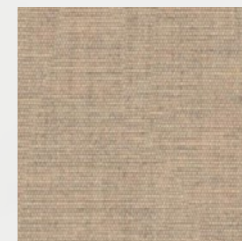
SJA 3988 137
STONE



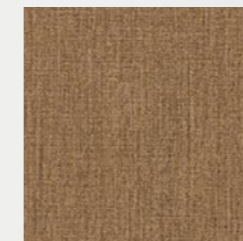
SJA 3706 137
SHINGLES



SJA 5422 137
ANTIQUE BEIGE



SJA 48009/00 137
ARMOR PEBBLE



SJA 5476 137
HEATHER BEIGE



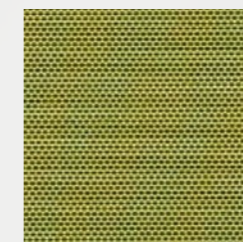
SJA 3907 137
TAUPE CHINÉ



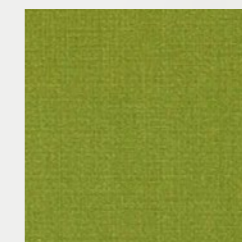
SJA 3729 137
TAUPE



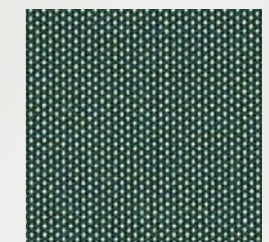
SJA 3967 137
MINT



SJA 3970 137
LICHEN



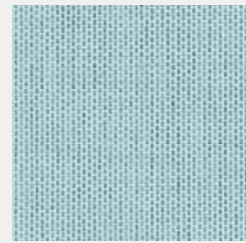
SJA 3738 137
MACAO



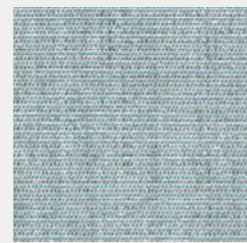
SJA 3987 137
ALPINE



SJA 3944 137
CHARRON



SJA 3964 137
CURAÇAO



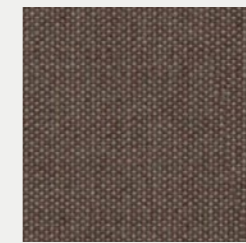
SJA 3793 137
MINERAL BLUE CHINÉ



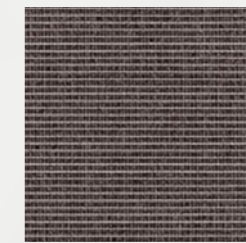
SJA 5420 137
MINERAL BLUE



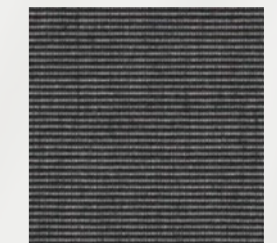
SJA 3737 137
ARDOISE



SJA 3127 137
MINK BROWN



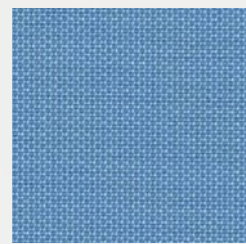
SJA 3792 137
DARK SMOKE



SJA 3705 137
CHARCOAL



SJA 5416 137
ARUBA



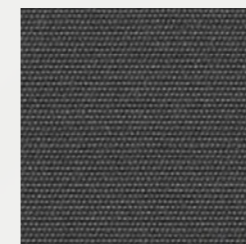
SJA 3990 137
MYOSOTIS



SJA 3941 137
ADRIATIC



SJA 3717 137
RIVIERA BLUE



SJA 3906 137
CARBON



SJA 3756 137
LEAD CHINÉ



SJA 3757 137
FLANELLE



SJA 3758 137
SOOTY



SJA 5499 137
TRUE BLUE



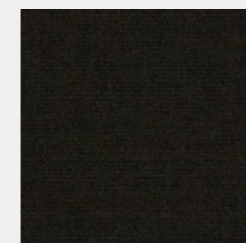
SJA 3942 137
BLUE STORM



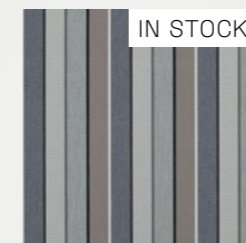
SJA 3991 137
BLAZER



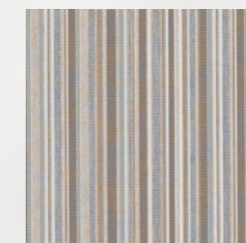
SJA 3984 137
CANARY



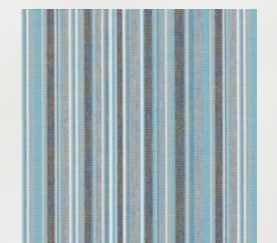
SJA 5408 137
BLACK



SJA 3778 137
QUADRI GREY



SJA 3777 137
PORTO GREY CHINÉ



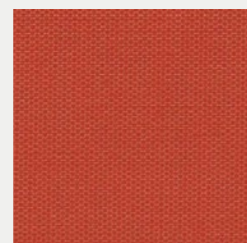
SJA 3776 137
PORTO BLUE CHINÉ



SJA 3938 137
MIMOSA



SJA 3969 137
PUMPKIN



SJA 3939 137
PAPRIKA



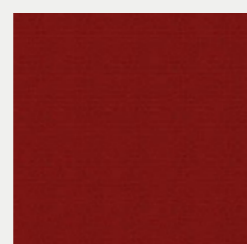
SJA 3965 137
BLUSH



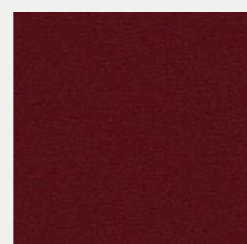
SJA 5477 137
LOGO RED



SJA 3968 137
PEPPER



SJA 3728 137
PARIS RED





SJA 5436 137
BURGUNDY



SOLIDS & STRIPES - ODYSSEY

PRODUCT SPECIFICATIONS

	STANDARDS NORMES	SOLIDS & STRIPES
INFO		100% Sunbrella Acrylic 54" / 137 cm width Selvedge is Left / Right
VARRANTY		We stand behind our fabrics with a guarantee that's best in the industry: a 5-year limited warranty for upholstery fabrics, specialty fabrics and decorative shade fabrics.
HOW TO CLEAN		For easy day-to-day maintenance of your Sunbrella fabric: 1-Brush off loose dirt before it becomes embedded 2-Wipe up spills as soon as they occur, and spot-clean fabric before stains set.
ZERO LANDFILL		 For over 30 years, Sunbrella® has recycled its industrial wastes such as yarn and packaging. Today, every Sunbrella® manufacturing facility around the globe sends absolutely no waste to the landfill.
COMPOSITION		100% Sunbrella® Acrylic
FINISH		Water-Repellent & Stain-Proof
MINIMUM USEFULL WIDTH	EN 1773	137
WEIGHT	ISO 3801 g/sqm - g/m²	260
ROLL LENGTH	LM - ML	50
SPRAY TEST	ISO 4920 Class/5	5
COLOUR FASTNESS UV INDOOR	ISO 105B02 Class/8	8
COLOUR FASTNESS TO WEATHER OUTDOOR	ISO 105B04 - 1000 H Class / 5	4-5
WASH COLOUR FASTNESS 30°C	ISO 105C06 Class/5	5
COLOUR FASTNESS DRY FRICTION	ISO 105X12 Class/5	5
COLOUR FASTNESS WET FRICTION	ISO 105X12 Class/5	5
CARE INSTRUCTIONS		 Ironing reinforces the treatment

Cleaning
Vacuum regularly. Wipe with a damp cloth using soap and water or use proprietary upholstery shampoo.
For deeper cleaning use bleach or alcohol.

CERTIFICATIONS



SUNBRELLA
NATTÉ
ODYSSEY

Timeless and versatile, Natté is a classic upholstery fabric. Natural to the eye and elegant to the touch, it is ideal for seats and accessories. Natté comes in a rich palette of colours, luxurious neutrals and new designs in invigorating, sophisticated hues.

NATTE - ODYSSEY



NAT 10020 140
WHITE



NAT 10014 140
NATURE



NAT 10021 140
CANVAS



NAT 10151 140
LINEN CHALK



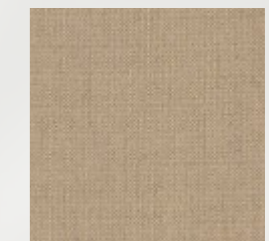
NAT 10152 140
GRAUMEL CHALK



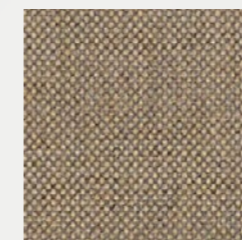
NAT 10155 140
TAUPE CHALK



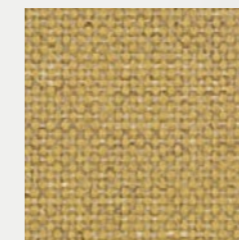
NAT 10150 140
HEATHER CHALK



NAT 10028 140
HEATHER BEIGE



NAT 10029 140
HEATHER GREY



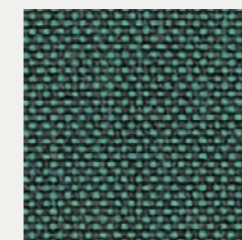
NAT 10235 140
AMBER



NAT 10234 140
FLAMINGO



NAT 10233 140
PISTACHIO



NAT 10232 140
IVY



NAT 10025 140
FROSTY CHINÉ



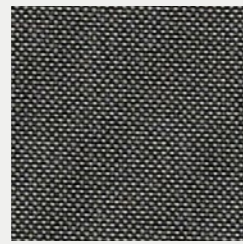
NAT 10064 140
CARBON SKY



NAT 10040 140
NATURE GREY



NAT 10065 140
CARBON BEIGE



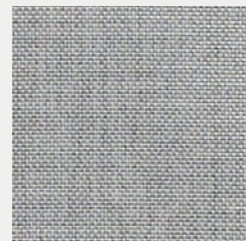
NAT 10059 140
DARK TAUPE



NAT 10231 140
CARMINE



NAT 10101 140
TONKA



NAT 10022 140
GREY CHINE



NAT 10063 140
CHARCOAL CHINÉ





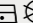



NAT 10030 140
SOOTY



NATTE - ODYSSEY

PRODUCT SPECIFICATIONS

	STANDARDS NORMES	NATTE
INFO		100% Sunbrella Acrylic 55" / 140 cm width Selvedge is Left / Right
VARRANTY		We stand behind our fabrics with a guarantee that's best in the industry: a 5-year limited warranty for upholstery fabrics, specialty fabrics and decorative shade fabrics.
HOW TO CLEAN		For easy day-to-day maintenance of your Sunbrella fabric: 1-Brush off loose dirt before it becomes embedded 2-Wipe up spills as soon as they occur, and spot-clean fabric before stains set.
ZERO LANDFILL		 For over 30 years, Sunbrella® has recycled its industrial wastes such as yarn and packaging. Today, every Sunbrella® manufacturing facility around the globe sends absolutely no waste to the landfill.
COMPOSITION		100% Sunbrella® Acrylic
FINISH		Water-Repellent & Stain-Proof
MINIMUM USEFULL WIDTH	EN 1773	140
WEIGHT	ISO 3801 g/sqm - g/m²	275
ROLL LENGTH	LM - ML	50
SPRAY TEST	ISO 4920 Class/5	5
COLOUR FASTNESS UV INDOOR	ISO 105B02 Class/8	8
COLOUR FASTNESS TO WEATHER OUTDOOR	ISO 105B04 - 1000 H Class / 5	4-5
WASH COLOUR FASTNESS 30°C	ISO 105C06 Class/5	5
COLOUR FASTNESS DRY FRICTION	ISO 105X12 Class/5	5
COLOUR FASTNESS WET FRICTION	ISO 105X12 Class/5	5
CARE INSTRUCTIONS		     Ironing reinforces the treatment

Cleaning
Vacuum regularly. Wipe with a damp cloth using soap and water or use proprietary upholstery shampoo. For deeper cleaning use bleach or alcohol.

CERTIFICATIONS



SUNBRELLA

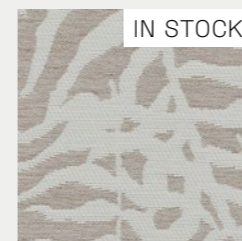
IKEBANA

BAHIA

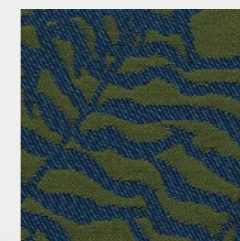
Like a shadow puppet, the design of the Ikebana fabric is displayed across its width, inviting us to enjoy the show. The bold colorful contrasts bring this plant-inspired jacquard to life and transports us to another land. Available in a range of six sparkling colours, Ikebana is ideal for drapes, seats and accessories.

CLASS E

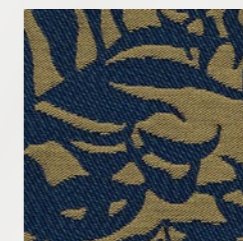
IKEBANA - BAHIA



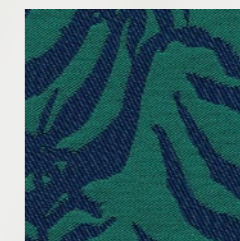
IKE J369 140
UYUNI



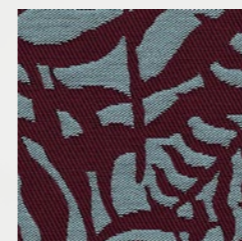
IKE J331 140
BAYOU



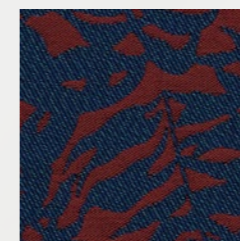
IKE J332 140
SAFARI



IKE J330 140
CANOPY



IKE J333 140
POLAR





IKE J334 140
CANYON



IKEBANA - BAHIA

PRODUCT SPECIFICATIONS

	STANDARDS NORMES	IKEBANA
INFO		55.1181" x 45.0787" 140.00 cm x 114.50 cm repeat 100% Sunbrella Acrylic 55" / 140 cm width Selvedge is Left / Right
VARRANTY		"We stand behind our fabrics with a guarantee that's best in the industry: a 5-year limited warranty for upholstery fabrics, specialty fabrics and decorative shade fabrics."
HOW TO CLEAN		"For easy day-to-day maintenance of your Sunbrella fabric: 1-Brush off loose dirt before it becomes embedded 2-Wipe up spills as soon as they occur, and spot-clean fabric before stains set."
ZERO LANDFILL		 For over 30 years, Sunbrella® has recycled its industrial wastes such as yarn and packaging. Today, every Sunbrella® manufacturing facility around the globe sends absolutely no waste to the landfill.
COMPOSITION		100% Sunbrella Acrylic
FINISH		Water-Repellent & Stain-Proof
MINIMUM USEFULL WIDTH	EN 1773	140
WEIGHT	ISO 3801 g/sqm - g/m²	525
ROLL LENGTH	LM - ML	25
SPRAY TEST	ISO 4920 Class/5	4
COLOUR FASTNESS UV INDOOR	ISO 105B02 Class/8	8
COLOUR FASTNESS TO WEATHER OUTDOOR	ISO 105B04 - 1000 H Class / 5	4-5
WASH COLOUR FASTNESS 30°C	ISO 105C06 Class/5	5
COLOUR FASTNESS DRY FRICTION	ISO 105X12 Class/5	5
COLOUR FASTNESS WET FRICTION	ISO 105X12 Class/5	5
CARE INSTRUCTIONS		 Ironing reinforces the treatment

Cleaning
Vacuum regularly. Wipe with a damp cloth using soap and water or use proprietary upholstery shampoo.
For deeper cleaning use bleach or alcohol.

CERTIFICATIONS



Upholstery Categories

CLASS	BRAND	NAME	TYPE
A	ALYA	LIVIO	FABRIC
	ALYA	MIRELLA	FABRIC
	ALYA	NARIO	FABRIC
	ALYA	TELMA	FABRIC
	ALYA	VERO	FABRIC
	IRUSUN	PLAIN MALANGE	FABRIC
B	ALYA	MATTEO	FABRIC
C	SUNBRELLA	SOLIDS & STRIPES	FABRIC
	SUNBRELLA	NATTE	FABRIC
E	SUNBRELLA	IKEBANA	FABRIC