

Katalog tkanin 2025

MTI-Furninova

Alba

Grupa cenowa: D

Skład: 100% Poliester z recyklingu

Ścieralność: 35.000

Światłotrwałość: 6-7

Mechacenie: 5

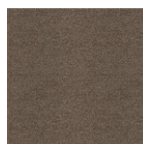
Uwagi: Oeko-Tex, Technologia Aquaclean

- łatwe czyszczenie wodą, Ochrona przed wirusami i bakteriami

Instrukcja:



Alba 09



Alba 11



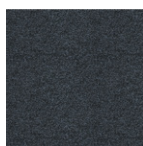
Alba 27



Alba 30



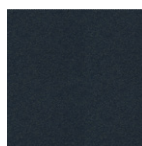
Alba 51



Alba 53



Alba 56



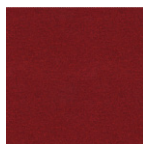
Alba 60



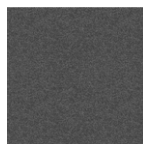
Alba 90



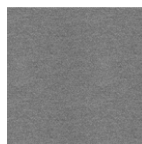
Alba 93



Alba 266



Alba 271



Alba 300



Alba 302



Alba 324



Alba 336



Alba 347



Alba 357



Alba 407



Alba 434

Katalog tkanin 2025

MTI-Furninova

Alboran

Grupa cenowa: D

Skład: 63% Poliester z recyklingu, 19% Modakryl,
10% Poliester, 8% Bawełna z recyklingu

Ścieralność: 50.000

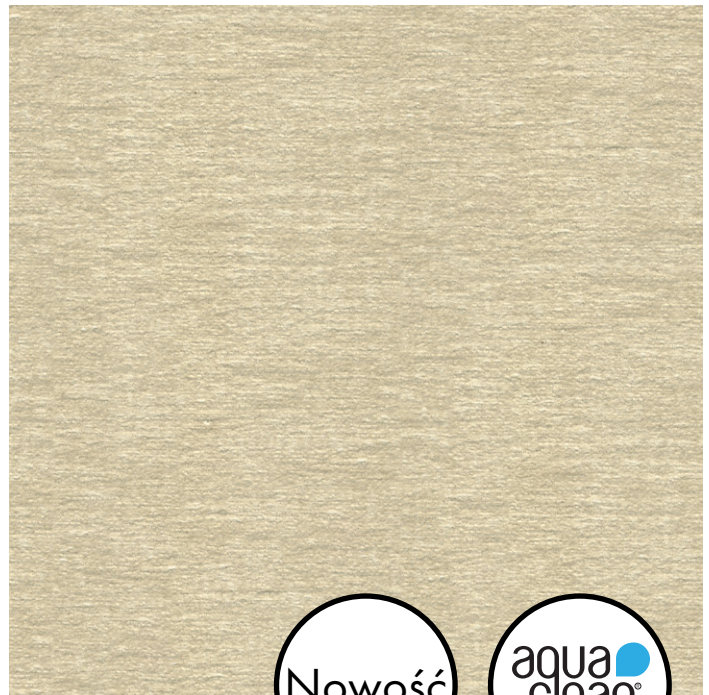
Światłotrwałość: 6

Mechacenie: 5

Uwagi: Oeko-Tex, Technologia Aquaclean

- łatwe czyszczenie wodą, Trudno palna, Ochrona przed wirusami i bakteriami

Instrukcja:



Alboran 09



Alboran 10



Alboran 11



Alboran 27



Alboran 30



Alboran 51



Alboran 53



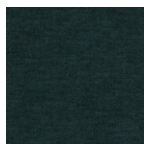
Alboran 56



Alboran 60



Alboran 90



Alboran 93



Alboran 266



Alboran 271



Alboran 300



Alboran 302



Alboran 324



Alboran 336



Alboran 342



Alboran 347



Alboran 357



Alboran 407

Katalog tkanin 2025

MTI-Furninova

Alice

Grupa cenowa: A

Skład: 51% Poliester, 42% Acrylic, 7% Bawełna

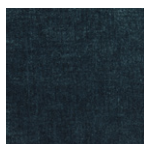
Ścieralność: 52.000

Światłotrwałość: 5

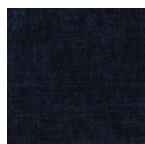
Mechacenie: 4-5

Uwagi: Oeko-Tex

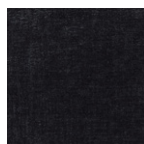
Instrukcja:



Petrol 45



Midnight Blue 48



Slate 49



Grey 77



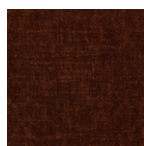
Mole 63



Beige 62



Cream 03



Bronze 19



Peach 32



Brown 65

Katalog tkanin 2025

MTI-Furninova

Alta

Grupa cenowa: A

Skład: 100 % Poliester

Ścieralność: 50.000

Światłotrwałość: 4

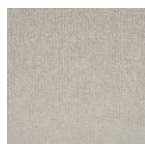
Mechacenie: 4

Uwagi: Oeko-Tex

Instrukcja:



Cream 03



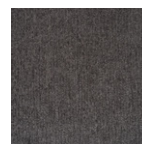
Stone 73



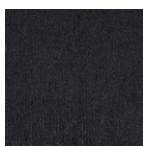
Blue 47



Olive 28



Grey 78



Black 89

Katalog tkanin 2025

MTI-Furninova

Amaral

Grupa cenowa: D

Skład: 96% Poliester, 4% Bawełna

Ścieralność: 60.000

Światłotrwałość: 5

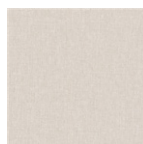
Mechacenie: 5

Uwagi: Oeko-Tex, Technologia Aquaclean-łatwe czyszczenie wodą, Ochrona przed wirusami i bakteriami

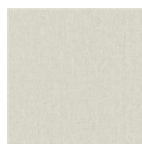
Instrukcja:



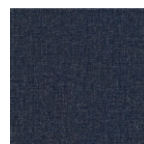
Amaral 10



Amaral 51



Amaral 56



Amaral 60



Amaral 90



Amaral 271



Amaral 300



Amaral 305



Amaral 314



Amaral 324



Amaral 347



Amaral 348



Amaral 349



Amaral 395



Amaral 407



Amaral 710



Amaral 790

Katalog tkanin 2025

MTI-Furninova

Bellagio

Grupa cenowa: D

Skład: 100% Poliester

Ścieralność: 100.000

Światłotrwałość: 5

Mechacenie: 5

Uwagi: Oeko-Tex, Technologia Aquaclean - łatwe czyszczenie wodą, Ochrona przed wirusami i bakteriami

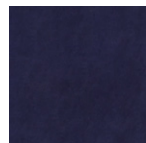
Instrukcja:



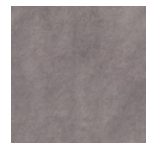
01



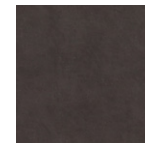
08



11



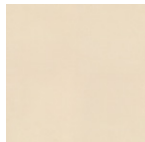
13



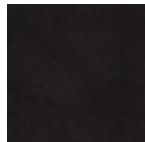
14



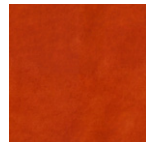
28



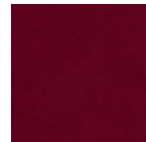
50



59



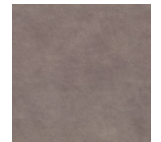
62



65



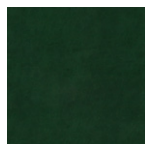
68



80



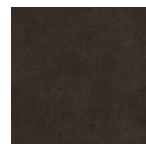
81



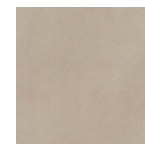
82



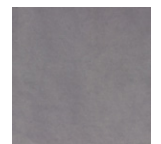
105



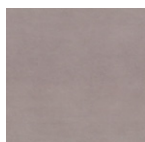
131



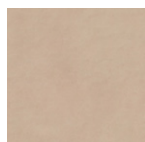
156



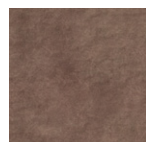
213



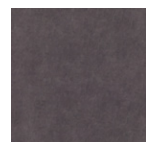
242



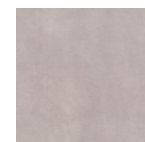
245



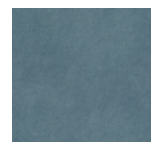
248



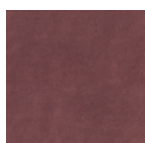
271



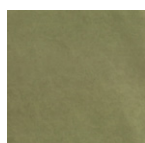
300



321



324



355



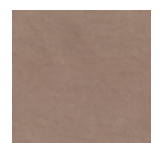
451



503



514



515

Katalog tkanin 2025

MTI-Furninova

Benson

Grupa cenowa: C

Skład: 53% Rafelin, 26% Poliester, 21% Akryl

Ścieralność: 30.000

Światłotrwałość: 5-6

Mechacenie: 4

Uwagi: Oeko-Tex

Instrukcja:



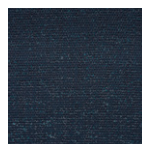
Cream 03



Bronze 19



Green 26



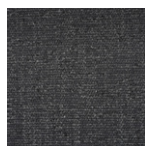
Blue 47



Taupe 64



Silver 75



Dark Grey 78

Katalog tkanin 2025

MTI-Furninova

Bloom

Grupa cenowa: C

Skład: 93% Poliester, 7% Bawełna

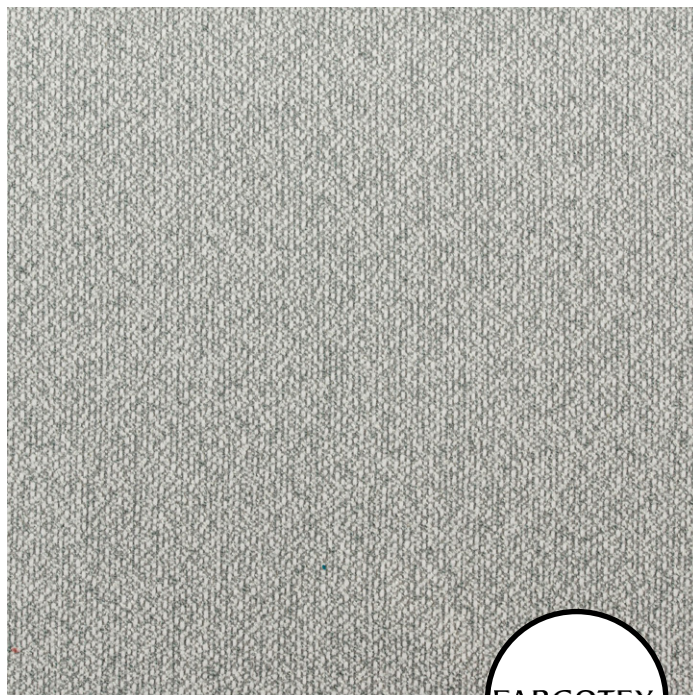
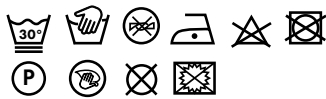
Ścieralność: 50.000

Światłotrwałość: 4-5

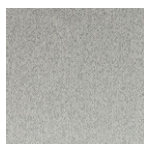
Mechacenie: 5

Uwagi: Tkanina szenilowa, Oeko-Tex, łatwe czyszczenie wodą, Utrudnione wchłanianie płynów, Trudnopalna

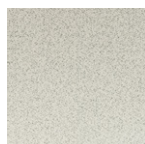
Instrukcja:



FARGOTEX



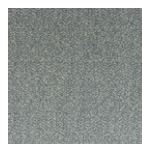
Bloom 01



Bloom 02



Bloom 03



Bloom 04



Bloom 05



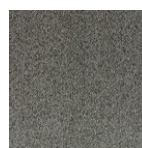
Bloom 06



Bloom 07



Bloom 08



Bloom 09



Bloom 10

Katalog tkanin 2025

MTI-Furninova

Can

Grupa cenowa: A

Skład: 51,5% Akryl, 48,5% Poliester

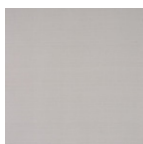
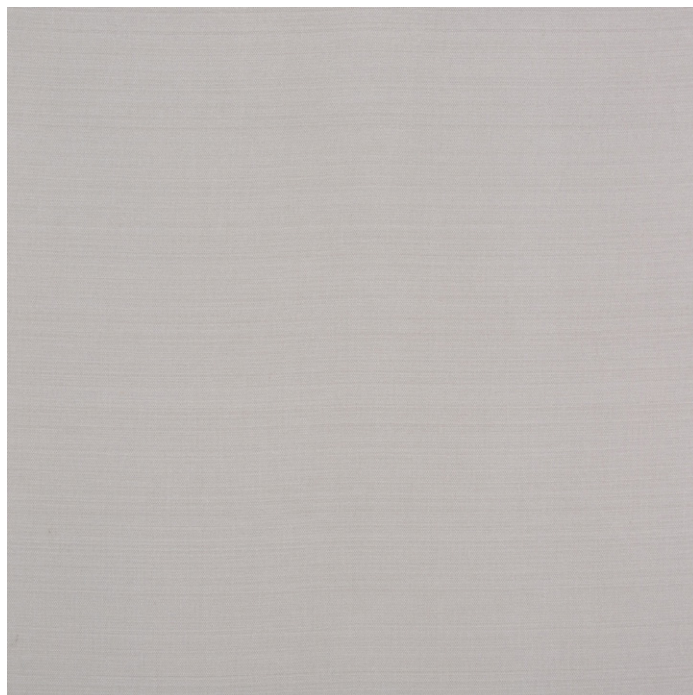
Ścieralność: 35.000

Światłotrwałość: 5-6

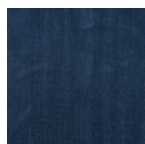
Mechacenie: 4-5

Uwagi: Oeko-Tex

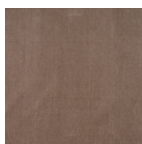
Instrukcja:



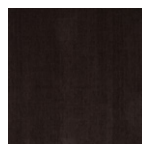
Snow 00



Blue 47



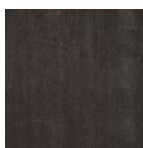
Light Beige 60



Mole 63



Light Grey 72



Grey 77

Katalog tkanin 2025

MTI-Furninova

Celine

Grupa cenowa: C

Skład: 100% Poliester

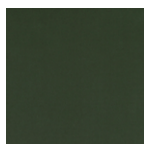
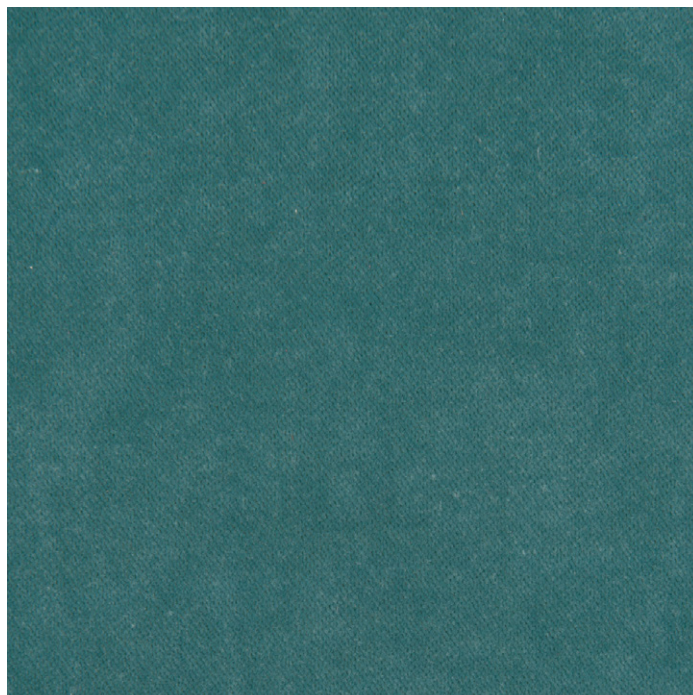
Ścieralność: 97.000

Światłotrwałość: 5

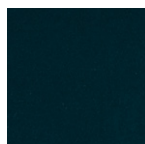
Mechacenie: 4

Uwagi: Oeko-Tex

Instrukcja:



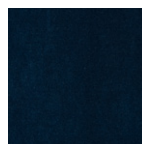
Emerald 27



Petrol 45



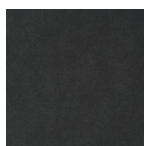
Ice 46



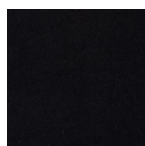
Midnight Blue 48



Taupe 64



Grey 77



Antracit 79

Katalog tkanin 2025

MTI-Furninova

Charme

Grupa cenowa: Exclusive

Skład: 63% Bawełna, 17% Poliakrylonitryl, 13% Wiskoza,
8% Poliester

Ścieralność: 35.000

Światłotrwałość:

Mechacenie: 4

Mechacenie: Tkanina szenilowa, Oeko-Tex, Trudnopalna

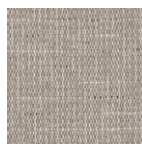
Instrukcja:



Charme 01



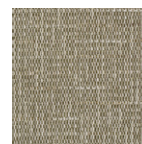
Charme 02



Charme 03



Charme 04



Charme 05



Charme 06

Katalog tkanin 2025

MTI-Furninova

Coco

Grupa cenowa: C

Skład: 30% Wiskoza, 25% Bawełna, 20% Poliester, 20%

Len, 5% Inne

Ścieralność: 25.000

Światłotrwałość: 5

Mechacenie: 3-4

Instrukcja:



Nature 01



Grey 77



Mole 63

Katalog tkanin 2025

MTI-Furninova

Corbett

Grupa cenowa: C

Skład: 99% Poliester, 1% Akryl

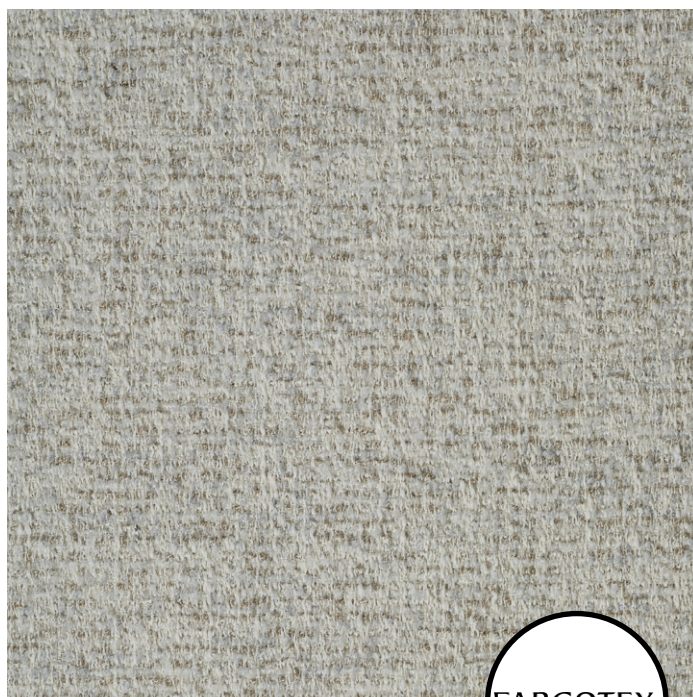
Ścieralność: 40.000

Światłotrwałość: 5

Mechacenie: 4

Uwagi: Oeko-Tex, Tkanina Strukturalna, Utrudnione wchłanianie płynów, łatwe czyszczenie wodą

Instrukcja:



FARGOTEX



Corbett 08



Corbett 21



Corbett 23



Corbett 28



Corbett 78



Corbett 82



Corbett 98



Corbett 100

Katalog tkanin 2025

MTI-Furninova

Cortina

Grupa cenowa: A

Skład: 44% Akryl, 42% Poliester, 14% Polipropylen

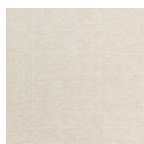
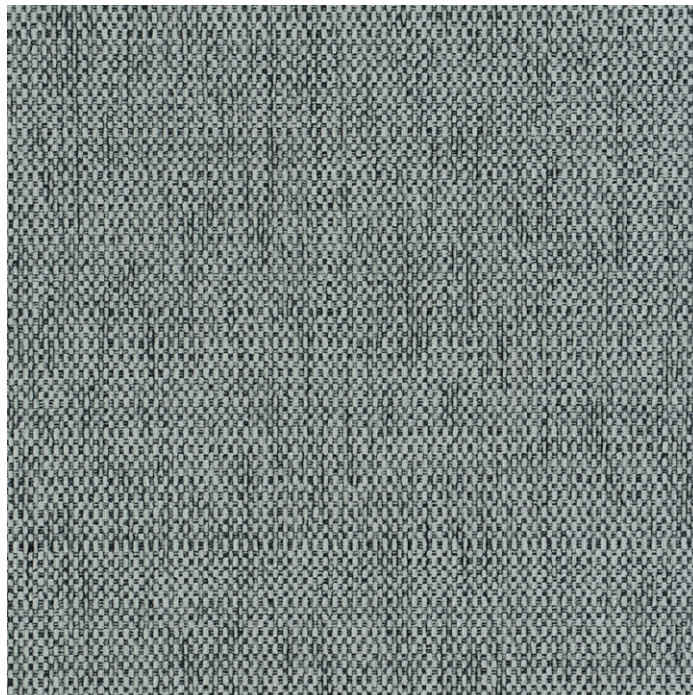
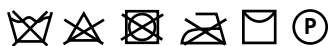
Ścieralność: 30.000

Światłotrwałość: 5

Mechacenie: 4-5

Uwagi: Oeko-Tex

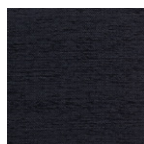
Instrukcja:



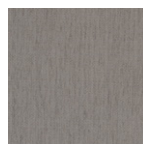
Snow 00



Sand 09



Dark Blue 48



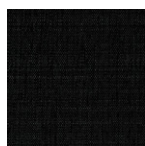
Soft Grey 71



Light Grey 72



Silver 75



Night 89

Katalog tkanin 2025

MTI-Furninova

Cruso

Grupa cenowa: D

Skład: 40% Bawełna, 25% Wiskoza, 10% Len, 20% Akryl,
5% Poliester

Ścieralność: 37.000

Światłotrwałość: 5

Mechacenie: 4

Uwagi: Oeko-Tex, Trudnopalna

Instrukcja:

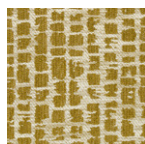


Nowość

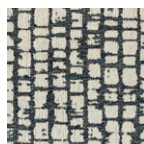
FARGOTEX



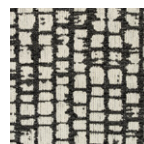
Cruso 01



Cruso 02



Cruso 03



Cruso 04



Cruso 05



Cruso 06

Katalog tkanin 2025

MTI-Furninova

Denali

Grupa cenowa: C

Skład: 93% Rolefin, 7% Poliester

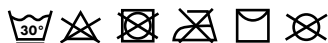
Ścieralność: 30.000

Światłotrwałość: 4-5

Mechacenie: 4-5

Uwagi: Oeko-Tex

Instrukcja:



White 00



Beige 62



Mole 63



Peach 32



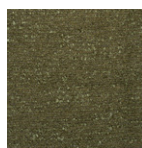
Bronze 19



Silver 75



Dark Grey 79



Olive 28



Blue 47

Katalog tkanin 2025

MTI-Furninova

Ditra New

Grupa cenowa: C

Skład: 100% Poliester

Ścieralność: 40.000

Światłotrwałość: 5

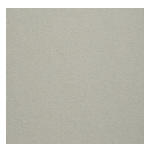
Mechacenie: 4

Uwagi: Oeko-Tex, Tkanina Szeniłowa, Utrudnione wchłanianie płynów, łatwe czyszczenie wodą

Instrukcja:



FARGOTEX



Ditra New 01



Ditra New 03



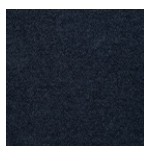
Ditra New 05



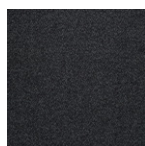
Ditra New 06



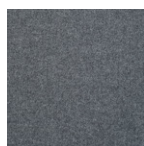
Ditra New 07



Ditra New 11



Ditra New 14



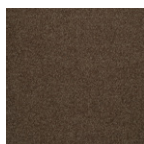
Ditra New 15



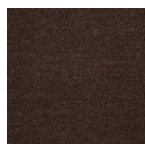
Ditra New 16



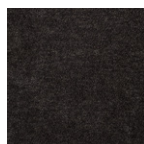
Ditra New 20



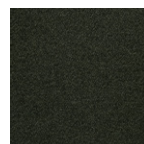
Ditra New 24



Ditra New 27



Ditra New 29



Ditra New 38

Katalog tkanin 2025

MTI-Furninova

Duetto

Grupa cenowa: D

Skład: 100% Poliester

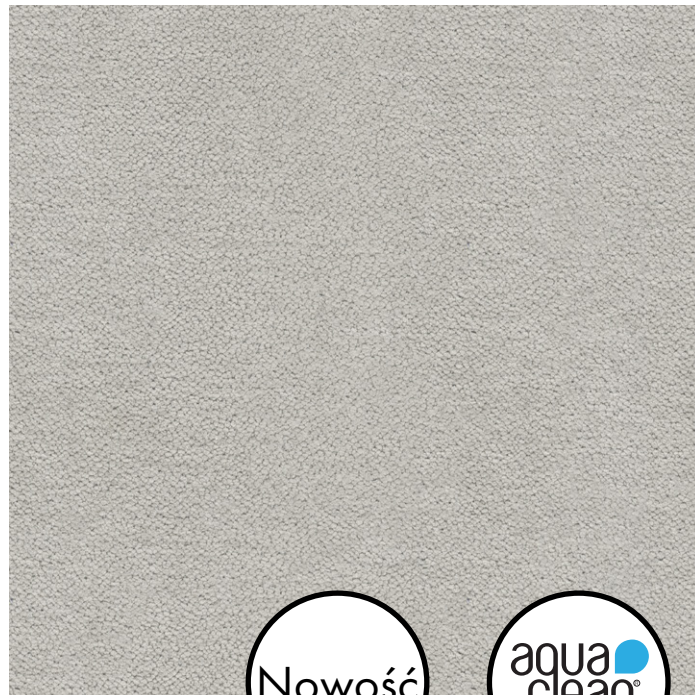
Ścieralność: 70.000

Światłotrwłość: 6

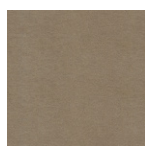
Mechacenie: 5

Uwagi: Oeko-Tex, Technologia Aquaclean - łatwe czyszczenie wodą, Ochrona przed wirusami i bakteriami

Instrukcja:



Duetto 01



Duetto 03



Duetto 12



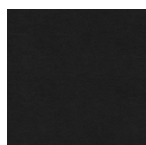
Duetto 27



Duetto 52



Duetto 56



Duetto 59



Duetto 62



Duetto 65



Duetto 100



Duetto 105



Duetto 112



Duetto 136



Duetto 144



Duetto 177



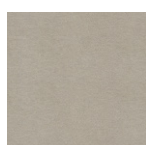
Duetto 201



Duetto 213



Duetto 214



Duetto 250



Duetto 313



Duetto 324



Duetto 395



Duetto 503



Duetto 521



Duetto 523



Duetto 528



Duetto 537



Duetto 553



Duetto 602



Duetto 603

Katalog tkanin 2025

MTI-Furninova

Eros

Grupa cenowa: B

Skład: 50,2% Akryl, 41,2% Poliester, 8,6% Wiskoza

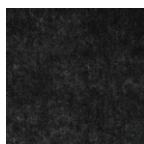
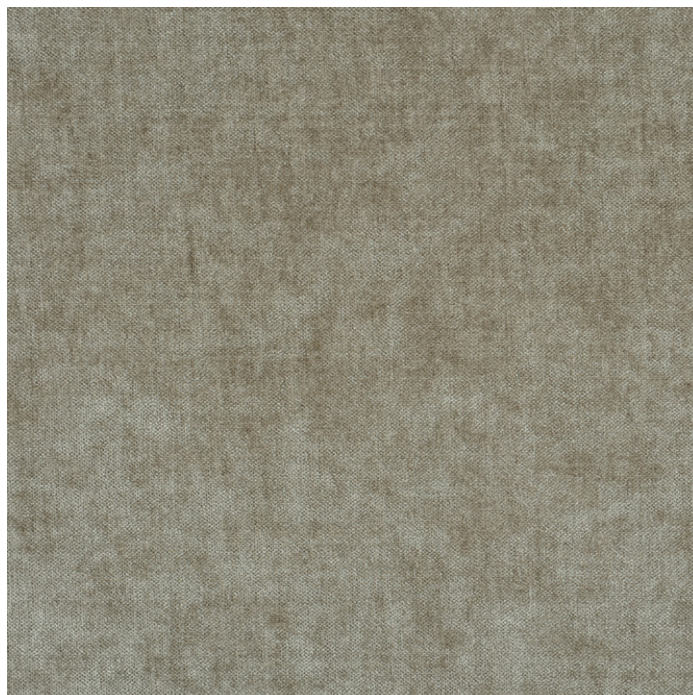
Ścieralność: 50.000

Światłotrwłość: 5

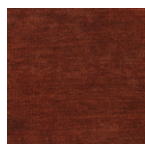
Mechacenie: 4

Uwagi: Oeko-Tex

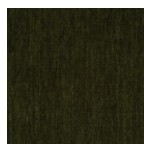
Instrukcja:



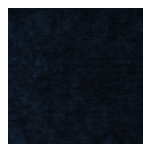
Antracit 79



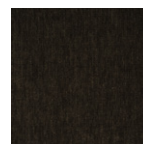
Bronze 64



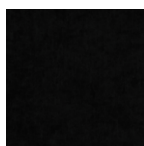
Forest 28



Midnight Blue 48



Mole 63



Night 89



Peach 32



Stone 73

Katalog tkanin 2025

MTI-Furninova

Estivo

Grupa cenowa: Exclusive

Skład: 40% Bawełna, 25% Wiskoza, 10% Len, 20% Akryl,
5% Poliester

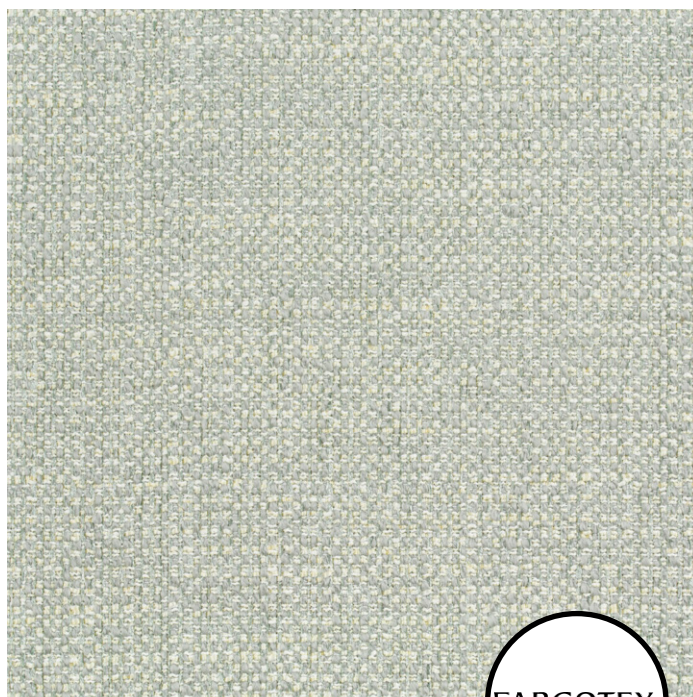
Ścieralność: 35.000

Światłotrwałość: 7

Mechacenie: 4

Uwagi: Oeko-Tex, Trudnopalna

Instrukcja:



FARGOTEX



Estivo 01



Estivo 02



Estivo 03



Estivo 04



Estivo 05

Katalog tkanin 2025

MTI-Furninova

Etna

Grupa cenowa: A

Skład: 50% Akryl, 47% Rolefin, 3% Poliester

Ścieralność: 20.000

Światłotrwałość: 5

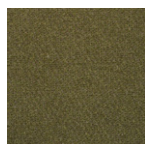
Mechacenie: 3-4

Uwagi: Oeko-Tex

Instrukcja:



Cream 03



Olive 28



Peach 32



Beige 62



Mole 63



Grey 77

Katalog tkanin 2025

MTI-Furninova

Evita

Grupa cenowa: B

Skład: 54,9% Poliester, 38,5% Akryl, 6,6% Wiskoza

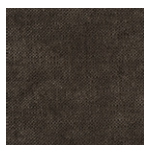
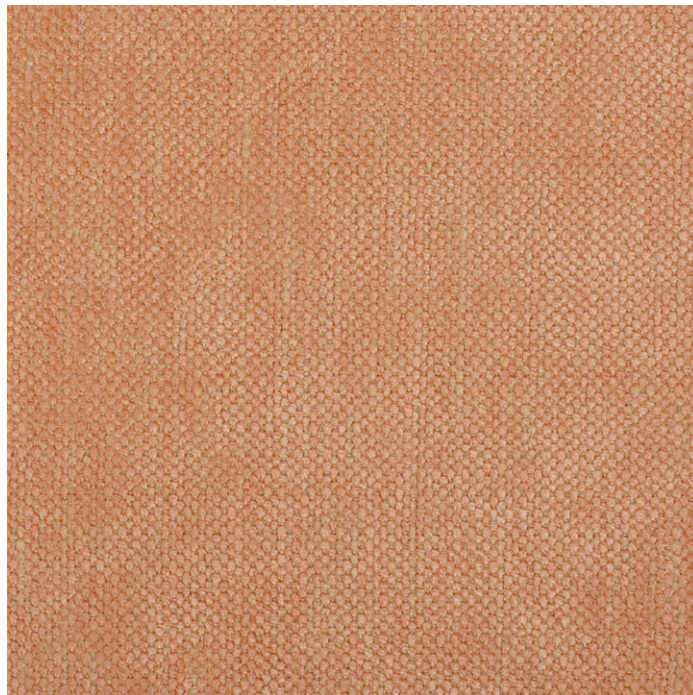
Ścieralność: 25.000

Światłotrwałość: 5-6

Mechacenie: 4

Uwagi: Oeko-Tex

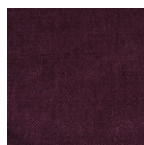
Instrukcja:



Antracit 42



Aqua 19



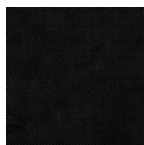
Aubergine 34



Baby blue 22



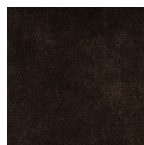
Banana 36



Black 44



Blueberry 40



Coffee 43



Concrete 41



Cream 04



Forest 35



Green tea 18



Ice 20



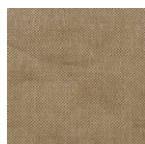
Ivory 03



Lavendel 33



Lemon 15



Light Beige 23



Light Grey 08



Light Pink 12



Lime 17



Mole 25



Nature 05



Ocean 38



Orange 26



Peach 13

Katalog tkanin 2025

MTI-Furninova

Evita

Grupa cenowa: B

Skład: 54,9% Poliester, 38,5% Akryl, 6,6% Wiskoza

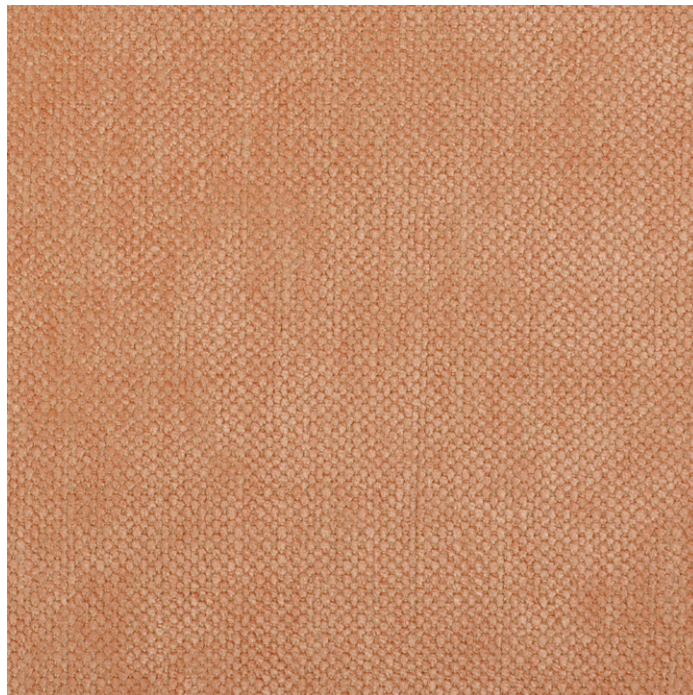
Ścieralność: 25.000

Światłotrwałość: 5-6

Mechacenie: 4

Uwagi: Oeko-Tex

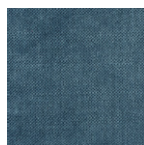
Instrukcja:



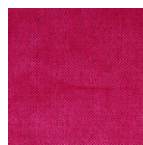
Pear 16



Pearl 02



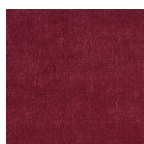
Petrol 39



Pink 31



Plum 29



Purple 32



Raspberry 30



Salmon 14



Sand 06



Silver 09



Sky 21



Snow 01



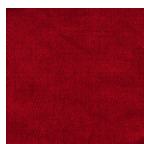
Soft Grey 07



Soft Pink 11



Soft Purple 10



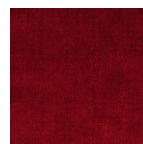
Strawberry 27



Sun 37



Taupe 24



Wine 28

Katalog tkanin 2025

MTI-Furninova

Gabrielle

Grupa cenowa: C

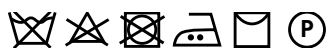
Skład: 49% Bawełna, 33% Poliester, 12% Akryl, 6% Inne

Ścieralność: 35.000

Światłotrwałość: 4

Mechacenie: 3-4

Instrukcja:



Emerald 27



Mole 63

Katalog tkanin 2025

MTI-Furninova

Gianni

Grupa cenowa: C

Skład: 77% Akryl, 22% Poliester, 1% Wiskoza

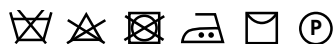
Ścieralność: 50.000

Światłotrwałość: 5

Mechacenie: 4

Uwagi: Oeko-Tex

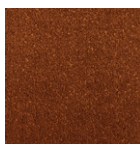
Instrukcja:



Cream 03



Sand 09



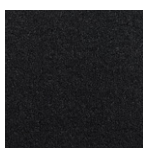
Bronze 19



Mole 63



Grey 77



Charcoal 78

Katalog tkanin 2025

MTI-Furninova

Imperial

Grupa cenowa: D

Skład: 100% Poliester

Ścieralność: 60.000

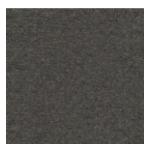
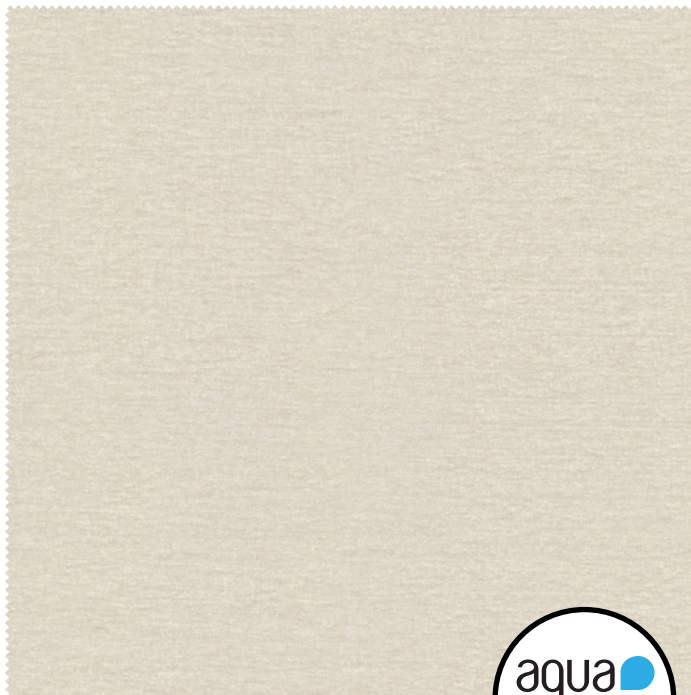
Światłotrwałość: 5

Mechacenie: 5

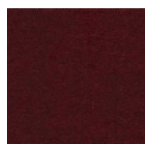
Uwagi: Oeko-Tex, Technologia Aquaclean

-łatwe czyszczenie wodą, Ochrona przed wirusami i bakteriami

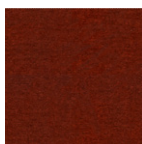
Instrukcja:



Imperial 10



Imperial 28



Imperial 30



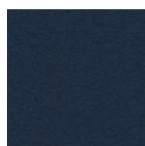
Imperial 32



Imperial 51



Imperial 56



Imperial 60



Imperial 271



Imperial 300



Imperial 314



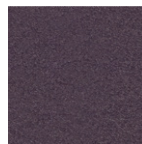
Imperial 324



Imperial 342



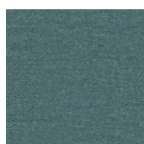
Imperial 347



Imperial 348



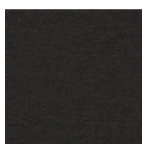
Imperial 349



Imperial 395



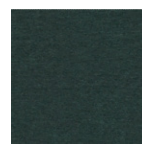
Imperial 407



Imperial 710



Imperial 732



Imperial 795

Katalog tkanin 2025

MTI-Furninova

Ito

Grupa cenowa: Exclusive

Skład: 71% Poliester, 20% Polipropylen, 9% Bawełna

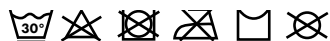
Ścieralność: 100.000

Światłotrwałość: 5-6

Mechacenie: 4-5

Uwagi: Oeko-Tex

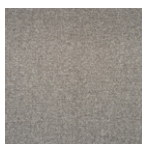
Instrukcja:



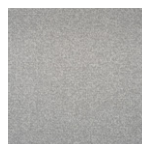
Sand 09



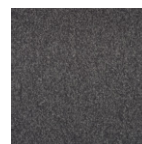
Taupe 64



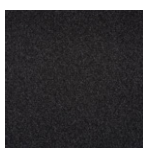
Stone 73



Silver 75



Grey 77



Charcoal 78

Katalog tkanin 2025

MTI-Furninova

Leo

Grupa cenowa: D

Skład: 100% Poliester

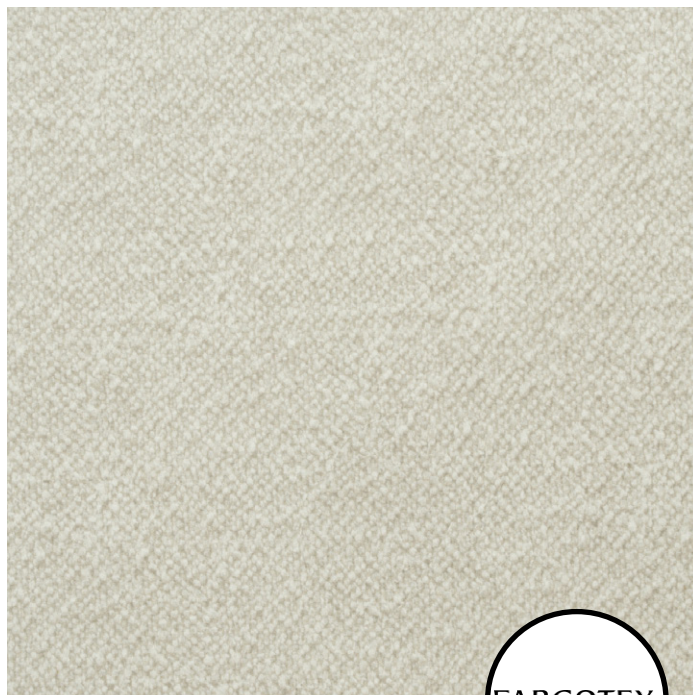
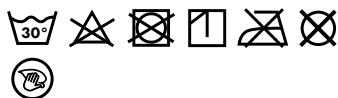
Ścieralność: 50.000

Światłotrwałość: 4

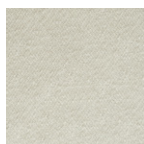
Mechacenie: 4

Uwagi: Dżianina printowana z wytłaczaną laserowo strukturą, Oeko-TEX, łatwe czyszczenie wodą, Utrudnione wchłanianie płynów, Przyjazne zwierzętom - odporne na zadrapania, Trudnopalna

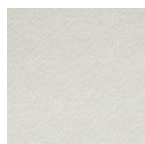
Instrukcja:



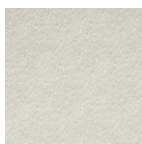
FARGOTEX



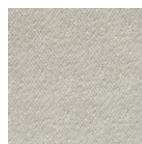
Leo 01



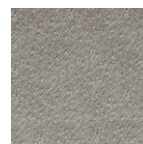
Leo 02



Leo 03



Leo 04



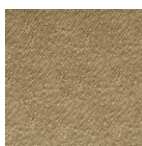
Leo 05



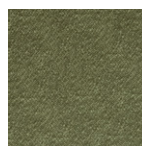
Leo 06



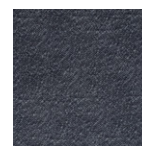
Leo 07



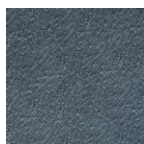
Leo 08



Leo 09



Leo 10



Leo 11



Leo 12



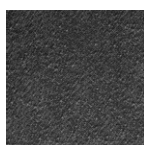
Leo 13



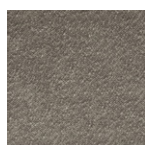
Leo 14



Leo 15



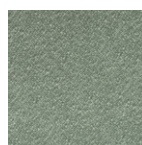
Leo 16



Leo 17



Leo 18



Leo 19



Leo 20

Katalog tkanin 2025

MTI-Furninova

Makalu

Grupa cenowa: A

Skład: 100% Poliester

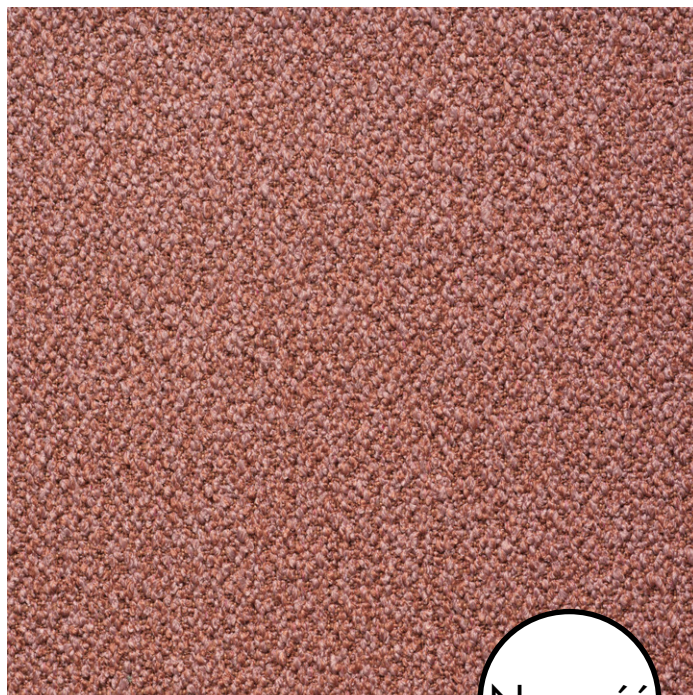
Ścieralność: 100.000

Światłotrwłość: 5

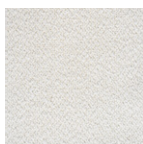
Mechacenie: 4-5

Uwagi: Oeko-Tex, Tkanina Boucle

Instrukcja:



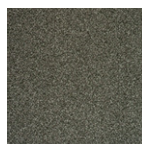
Nowość



Ivory



Eucalyptus



Forest



Blush



Magnolia



Beige



Taupe



Steel

Katalog tkanin 2025

MTI-Furninova

Manchester

Grupa cenowa: D

Skład: 47% Poliester, 36% Akryl, 9% Wełna, 8% Wiskoza

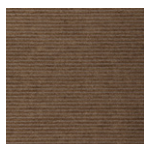
Ścieralność: 27.000

Światłotrwłość: 4

Mechacenie: 4

Uwagi: Oeko-Tex

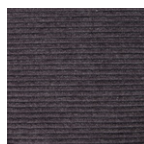
Instrukcja:



Sand 09



Mustard 17



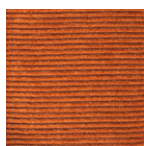
Antracit 79



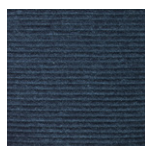
Green 26



Grey 77



Orange 18



Petrol 45



Turquoise 42



Cream 03

Katalog tkanin 2025

MTI-Furninova

Marilyn

Grupa cenowa: C

Skład: 64% Akryl, 36% Poliester

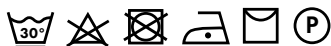
Ścieralność: 50.000

Światłotrwłość: 5

Mechacenie: 4

Uwagi: Oeko-Tex

Instrukcja:



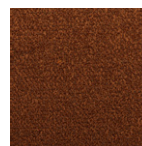
White 00



Nature 01



Mustard 17



Bronze 19



Beige 62



Brown 65



Silver 75

Katalog tkanin 2025

MTI-Furninova

Matiss

Grupa cenowa: D

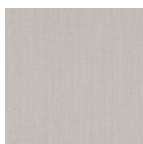
Skład: 55% Poliester, 20% Wiskoza, 15% Bawełna, 10%Len

Ścieralność: 35.000

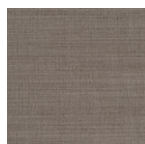
Światłotrwałość: 5-6

Mechacenie: 4-5

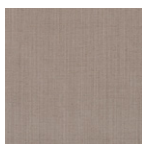
Uwagi: Oeko-Tex



Snow 00



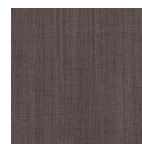
Nature 01



Sand 09



Light Grey 09



Grey 77

Katalog tkanin 2025

MTI-Furninova

Maya

Grupa cenowa: B

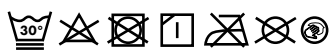
Skład: 100% Poliester

Ścieralność: 45.000

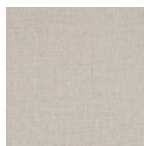
Światłotrwałość: 4 **Mechacenie:** 4-5

Uwagi: Dzianina z printem imitującym splot tkaninowy, Oeko-Tex, łatwe czyszczenie wodą, Utrudnione wchłanianie płynów, Przyjazna zwierzętom - odporna na zadrapania

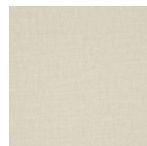
Instrukcja:



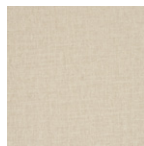
FARGOTEX



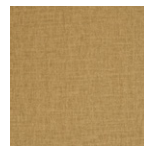
Maya 01



Maya 02



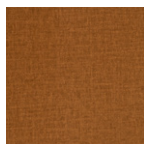
Maya 03



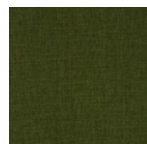
Maya 04



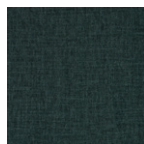
Maya 05



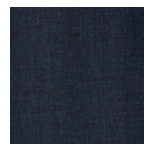
Maya 06



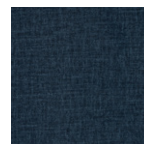
Maya 07



Maya 08



Maya 09



Maya 10



Maya 11



Maya 12



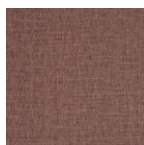
Maya 13



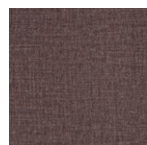
Maya 14



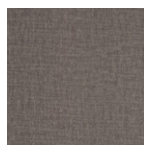
Maya 15



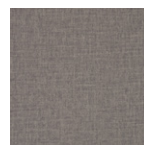
Maya 16



Maya 17



Maya 18



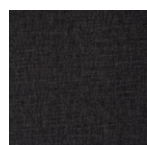
Maya 19



Maya 20



Maya 21



Maya 22

Katalog tkanin 2025

MTI-Furninova

Melange

Grupa cenowa: Exclusive

Skład: 42% Poliester, 42% Polipropylen, 16% Bawełna

Ścieralność: 85.000

Światłotrwałość: 5-6

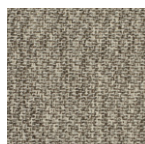
Mechacenie: 4-5

Uwagi: Oeko-Tex

Instrukcja:



Silver 75



Grey 77



Antracit 79

Katalog tkanin 2025

MTI-Furninova

Metis

Grupa cenowa: Exclusive

Skład: 100% Poliester

Ścieralność: 100.000

Światłotrwałość: 4-5

Mechacenie: 4-5

Uwagi: Tkanina welwetowa, Oeko-Tex, łatwe czyszczenie wodą, Utrudnione wchłanianie płynów, Przyjazne zwierzętom - odporne na zadrapania, Trudnopalna

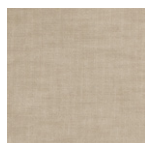
Instrukcja:



FARGOTEX



Metis 01



Metis 02



Metis 03



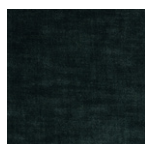
Metis 04



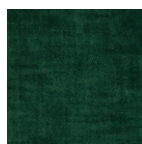
Metis 05



Metis 06



Metis 07



Metis 08



Metis 09



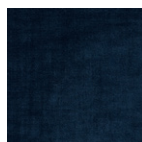
Metis 10



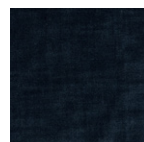
Metis 11



Metis 12



Metis 13



Metis 14



Metis 15



Metis 16



Metis 17



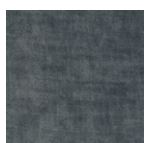
Metis 18



Metis 19



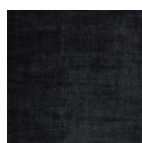
Metis 20



Metis 21



Metis 22



Metis 23

Katalog tkanin 2025

MTI-Furninova

Montserrat



Grupa cenowa: B

Skład: 57% Akryl, 42% Poliester, 1% Wiskoza

Ścieralność: 45.000

Światłotrwałość: 5

Mechacenie: 4-5

Uwagi: Oeko-Tex

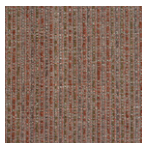
Instrukcja:



Nature 02



Beige 03



Rust 19



Blue 47

Katalog tkanin 2025

MTI-Furninova

Mystic

Grupa cenowa: D

Skład: 10% Poliester

Ścieralność: 200.000

Światłotrwałość: 5

Mechacenie: 4-5

Uwagi: Oeko-Tex, Technologia Aquaclean - łatwe czyszczenie wodą, Ochrona przed wirusami i bakteriami

Instrukcja:



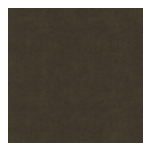
Mystic 01



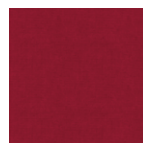
Mystic 03



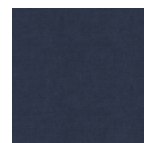
Mystic 05



Mystic 07



Mystic 08



Mystic 11



Mystic 12



Mystic 13



Mystic 15



Mystic 18



Mystic 21



Mystic 32



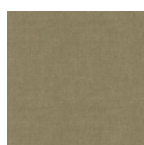
Mystic 38



Mystic 50



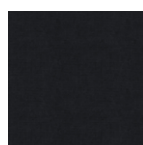
Mystic 51



Mystic 52



Mystic 56



Mystic 59



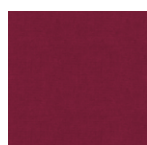
Mystic 61



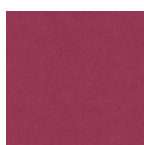
Mystic 62



Mystic 64



Mystic 65



Mystic 66



Mystic 68



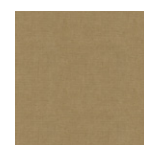
Mystic 69



Mystic 73



Mystic 100



Mystic 104



Mystic 105



Mystic 112



Mystic 114



Mystic 131



Mystic 136



Mystic 144



Mystic 161

Katalog tkanin 2025

MTI-Furninova

Mystic

Grupa cenowa: D

Skład: 10% Poliester

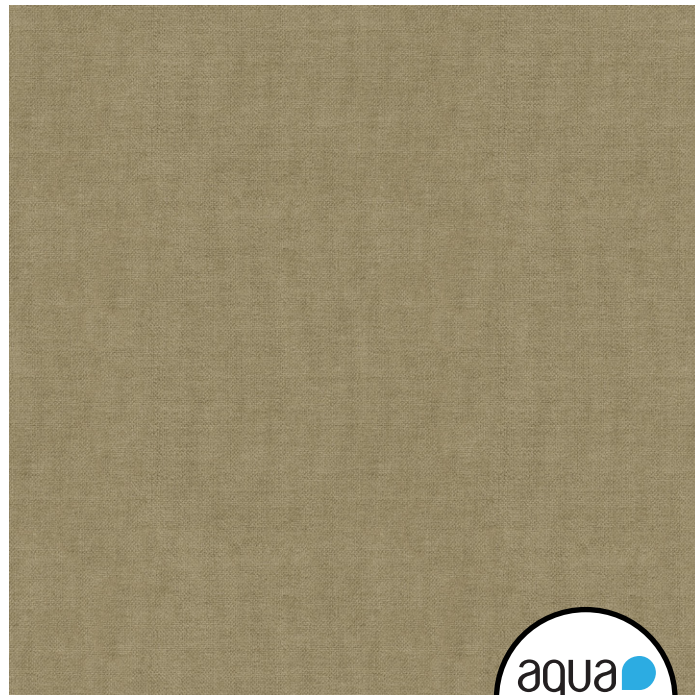
Ścieralność: 200.000

Światłotrwałość: 5

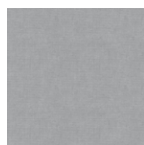
Mechacenie: 4-5

Uwagi: Oeko-Tex, Technologia Aquaclean - łatwe czyszczenie wodą, Ochrona przed wirusami i bakteriami

Instrukcja:



Mystic 165



Mystic 176



Mystic 177



Mystic 187



Mystic 190



Mystic 213



Mystic 214



Mystic 244



Mystic 248



Mystic 250



Mystic 252



Mystic 311



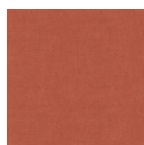
Mystic 313



Mystic 320



Mystic 324



Mystic 373



Mystic 387



Mystic 395



Mystic 503



Mystic 510



Mystic 514



Mystic 523



Mystic 525



Mystic 526



Mystic 528



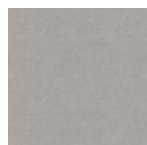
Mystic 537



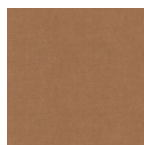
Mystic 545



Mystic 546



Mystic 549



Mystic 551



Mystic 553



Mystic 556



Mystic 559



Mystic 602



Mystic 603

Katalog tkanin 2025

MTI-Furninova

Nancy

Grupa cenowa: B

Skład: 46% Akryl, 44% Poliester, 10% Bawełna

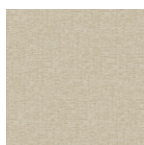
Ścieralność: 40.000

Światłotrwłość: 5-6

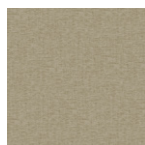
Mechacenie: 5

Uwagi: Oeko-Tex

Instrukcja:



Nature 01



Sand 09



Soft Bue 47



Soft Grey 71



Soft Pink 30

Katalog tkanin 2025

MTI-Furninova

Nanda

Grupa cenowa: B

Skład: 47% Polipropylen, 32% Poliester,
21% Poliakrylonitryl

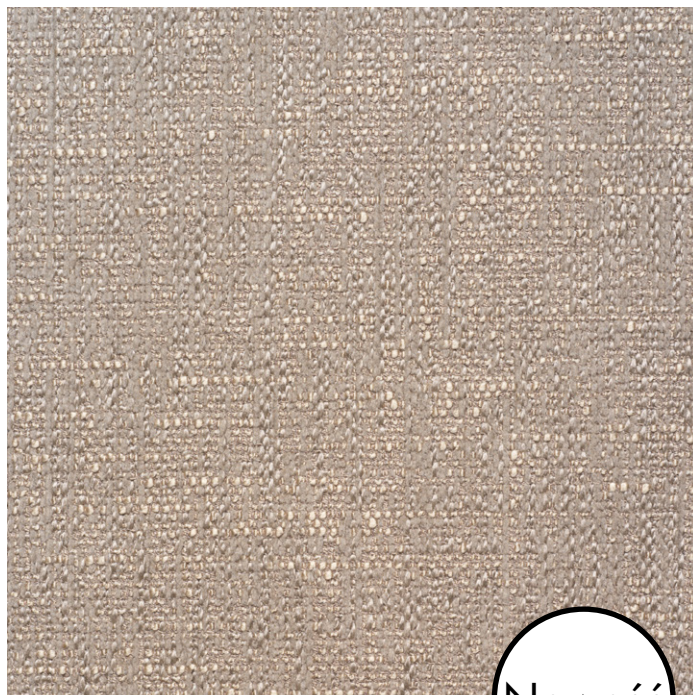
Ścieralność: 35.000

Światłotrwałość: 5

Mechacenie: 4-5

Uwagi: Oeko-Tex

Instrukcja:



Nowość



Snow



Nature



Blush



Sea



Mole



Umber

Katalog tkanin 2025

MTI-Furninova

Naomi 2022

Grupa cenowa: D

Skład: 56% Poliester, 34% Bawełna z recyklingu,
10% Bawełna

Ścieralność: 50.000

Mechacenie: 5

Uwagi: Oeko-Tex, Technologia Aquaclean - łatwe
czyszczenie wodą, Ochrona przed wirusami i bakteriami

Instrukcja:



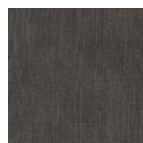
01



02



13



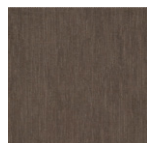
14



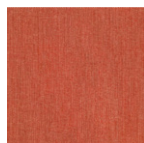
28



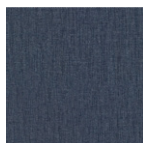
42



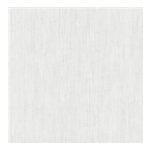
52



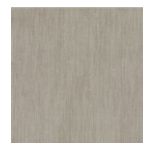
55



60



100



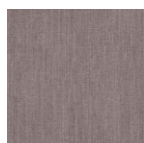
112



121



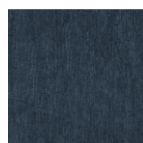
133



134



153



160



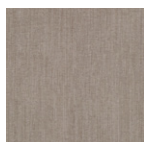
213



305



309



316



324



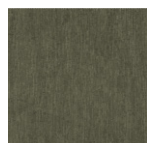
336



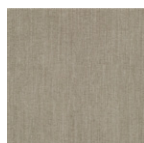
342



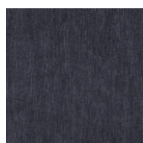
395



407



430



448



514



515



516

Katalog tkanin 2025

MTI-Furninova

Nebbia

Grupa cenowa: D

Skład: 100% Poliester

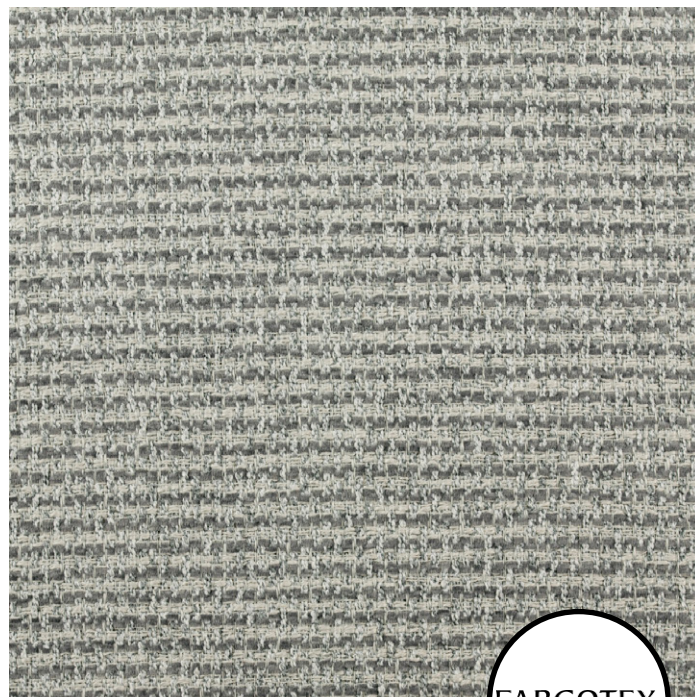
Ścieralność: 43.000

Światłotrwłość: 4-5

Mechacenie: 5

Uwagi: Tkanina szenilowa, Oeko-Tex, łatwe czyszczenie wodą, Utrudnione wchłanianie płynów, Przyjazna zwierzętom - odporna na zadrapania, Ochrona przed wirusami, bakteriami i grzybami, Trudnopalna

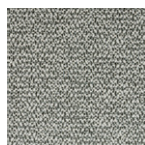
Instrukcja:



FARGOTEX



Nebbia 01



Nebbia 02



Nebbia 03



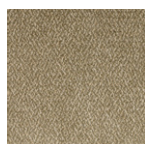
Nebbia 04



Nebbia 05



Nebbia 06



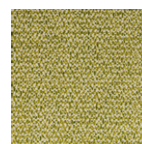
Nebbia 07



Nebbia 08



Nebbia 09



Nebbia 10



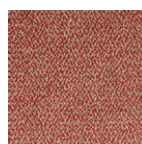
Nebbia 11



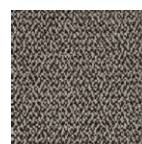
Nebbia 12



Nebbia 13



Nebbia 14



Nebbia 15

Katalog tkanin 2025

MTI-Furninova

Nevis

Grupa cenowa: B

Skład: 97% Poliester, 3% Len

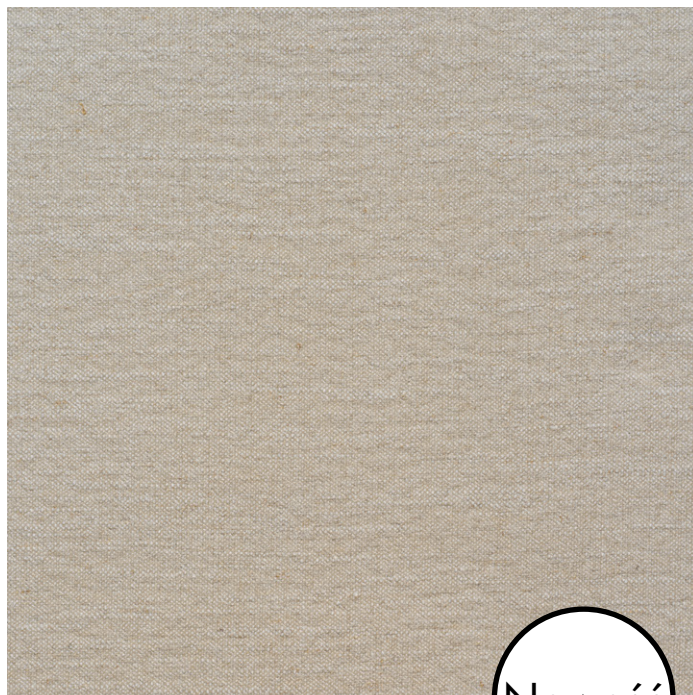
Ścieralność: 40.000

Światłotrwałość: 4

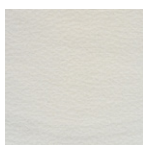
Mechacenie: 3-4

Uwagi: Oeko-Tex

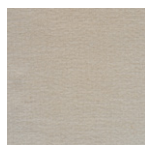
Instrukcja:



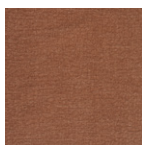
Nowość



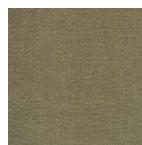
Ivory



Sand



Rust



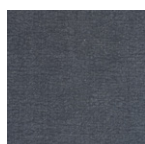
Olive



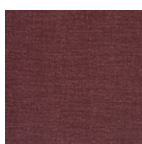
Forest



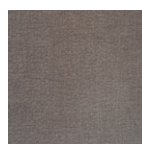
Sky



Petrol



Plum



Steel

Katalog tkanin 2025

MTI-Furninova

Notte

Grupa cenowa: Exclusive

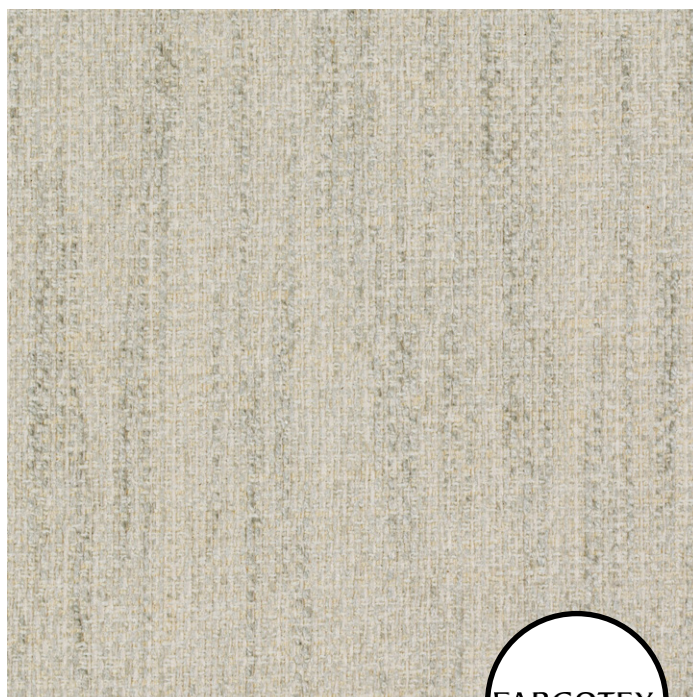
Skład: 45% Wiskoza, 20% Bawełna, 30% Akryl,
5% Poliester

Ścieralność: 35.000

Mechacenie: 4

Uwagi: Tkanina szenilowa, Oeko-Tex, Trudnopalna

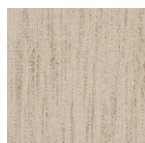
Instrukcja:



FARGOTEX



Notte 01



Notte 02



Notte 03



Notte 04



Notte 05



Notte 06



Notte 07

Katalog tkanin 2025

MTI-Furninova

Nuriel

Grupa cenowa: D

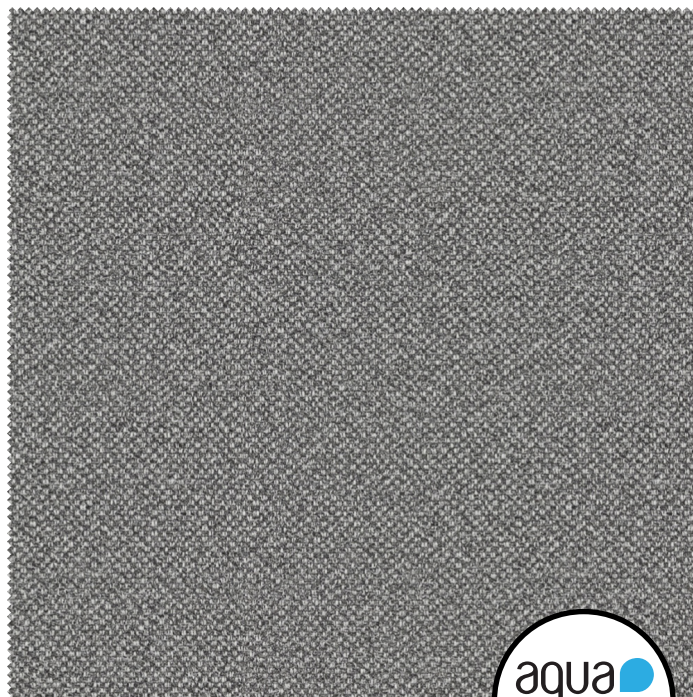
Skład: 68% Poliester, 22% Modakryl, 10% Bawełna

Ścieralność: 50.000

Mechacenie: 5

Uwagi: Oeko-Tex, Technologia Aquaclean - łatwe czyszczenie wodą, Ochrona przed wirusami i bakteriami

Instrukcja:



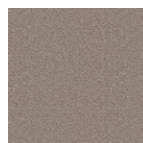
10



28



30



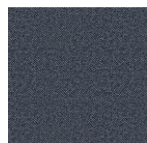
32



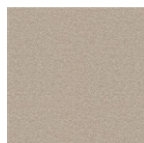
51



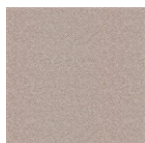
56



60



90



248



271



300



305



309



314



321



324



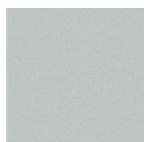
336



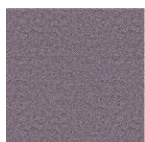
341



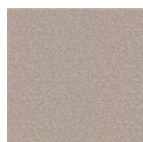
342



347



348



349



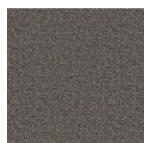
395



407



700



710



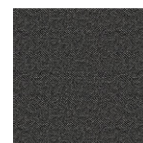
732



740



795



999

Katalog tkanin 2025

MTI-Furninova

Paris

Grupa cenowa: A

Skład: 100% Poliester

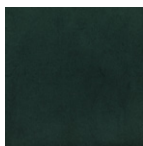
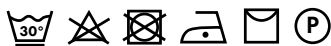
Ścieralność: 27.000

Światłotrwałość: 5

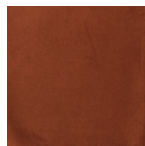
Mechacenie: 4-5

Uwagi: Oeko-Tex

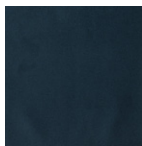
Instrukcja:



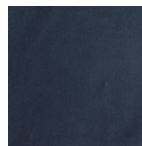
Emerald 27



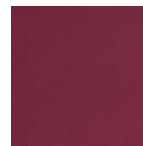
Bronze 39



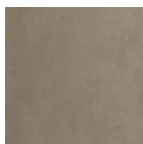
Petrol 45



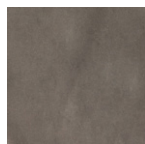
Steel 49



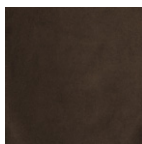
Aubergine 57



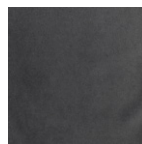
L. Beige 60



Taupe 64



Brown 65



Grey 77



Black 89

Katalog tkanin 2025

MTI-Furninova

Reggio

Grupa cenowa: D

Skład: 37% Poliakrylonitryl, 31% Poliester, 22% Bawełna,
10% Wiskoza

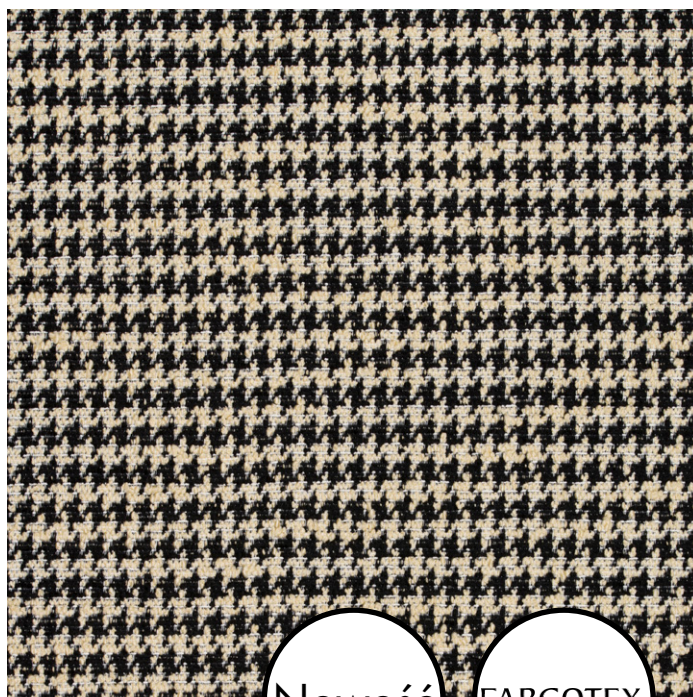
Ścieralność: 25.000

Światłotrwałość:

Mechacenie: 3-4

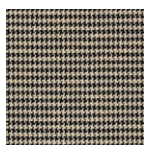
Uwagi: Tkanina Boucle - Pepitka, Oeko-Tex, Trudnopalna

Instrukcja:

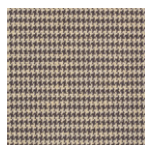


Nowość

FARGOTEX



Reggio 01

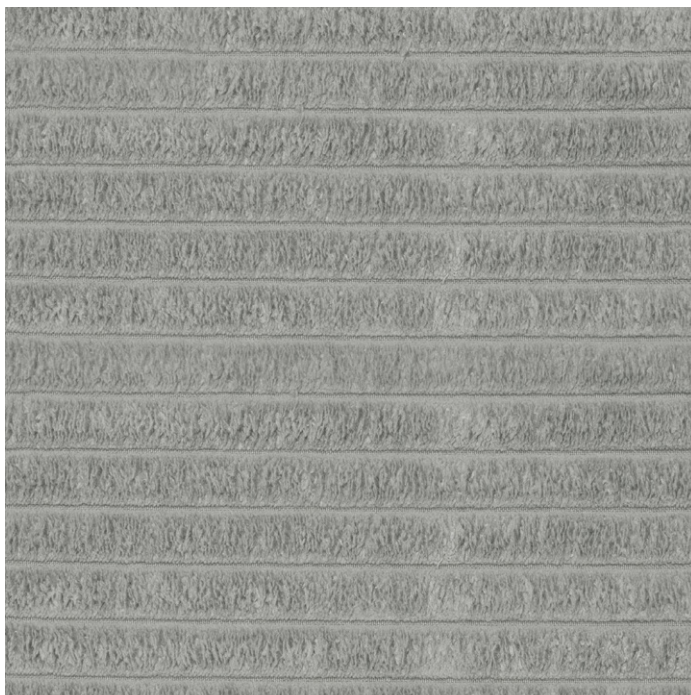


Reggio 02

Katalog tkanin 2025

MTI-Furninova

Ribcord



Grupa cenowa: B

Skład: 88% Poliester, 12% Poliamid

Ścieralność: 100.000

Światłotrwałość: 4

Mechacenie: 4-5

Uwagi: Prążki zawsze w poziomie

Instrukcja:



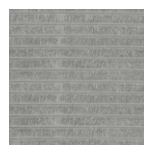
White 00



Aqua 19



Petrol 45



Grey 77



Antracit 79

Katalog tkanin 2025

MTI-Furninova

Salento

Grupa cenowa: A

Skład: 100% Poliester

Ścieralność: 40.000

Światłotrwałość: 4-5

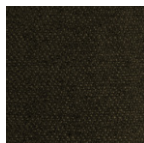
Mechacenie: 4

Uwagi: Oeko-Tex

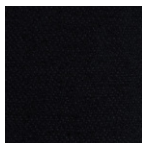
Instrukcja:



White 00



Dark green 28



Dark Blue 48



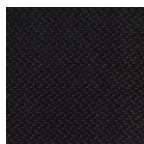
Linen 61



Mole 63



Stone 73



Black 89

Katalog tkanin 2025

MTI-Furninova

Sheford

Grupa cenowa: D

Skład: 70% Włna, 20% Poliester, 5% Poliamid, 5% Inne

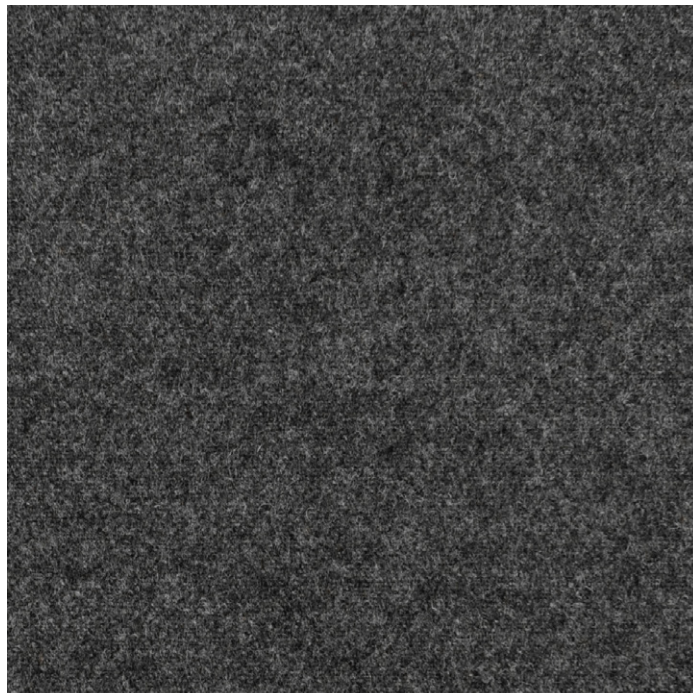
Ścieralność: 40.000

Światłotrwałość: 4-5

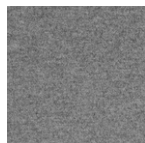
Mechacenie: 3-4

Uwagi:

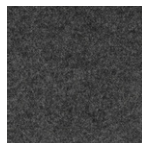
Instrukcja:



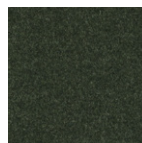
Stone 73



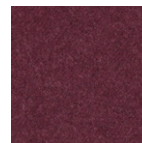
Light Grey 72



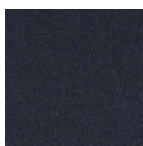
Dark Grey 77



Forest 28



Aubergine 57



Dark Blue 48

Katalog tkanin 2025

MTI-Furninova

Sole

Grupa cenowa: C

Skład: 100% Poliester

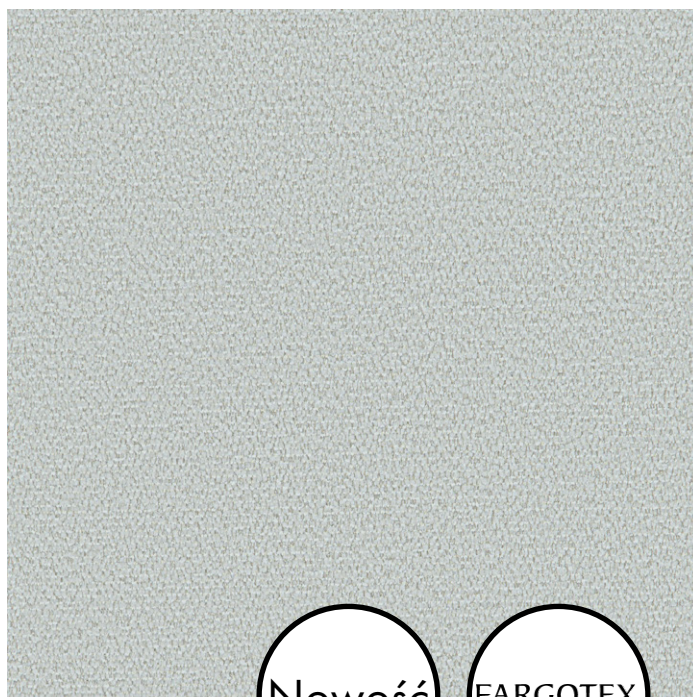
Ścieralność: 30.000

Światłotrwałość: 4

Mechacenie: 4-5

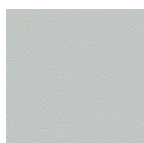
Uwagi: Tkanina szenilowa, Oeko-Tex

Instrukcja:

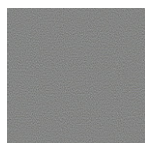


Nowość

FARGOTEX



Sole 02



Sole 05



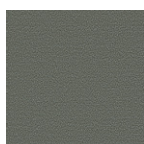
Sole 11



Sole 18



Sole 27



Sole 31



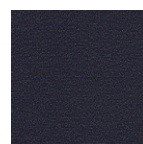
Sole 38



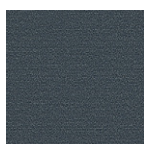
Sole 52



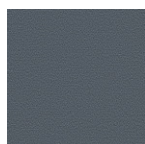
Sole 57



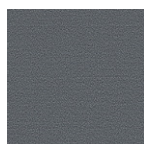
Sole 66



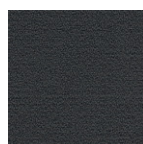
Sole 75



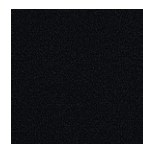
Sole 86



Sole 87



Sole 98



Sole 100

Katalog tkanin 2025

MTI-Furninova

Strong

Grupa cenowa: C

Skład: 100% Poliester

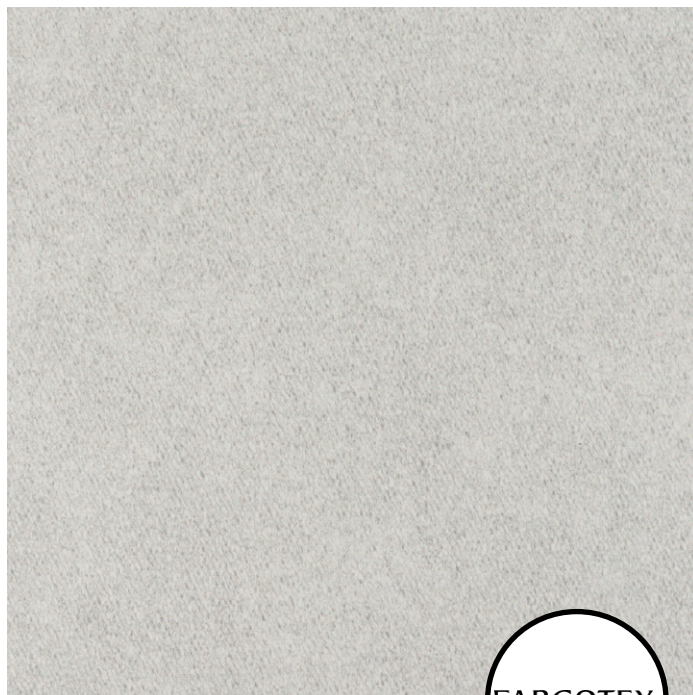
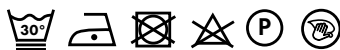
Ścieralność: 50.000

Światłotrwałość: 4

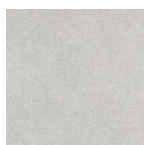
Mechacenie: 4

Uwagi: Dżianina, Oeko-Tex, łatwe czyszczenie wodą, Trudnopalna, Przyjazna zwierzętom - odporna na zadrapania, Ochrona przed wirusami, bakteriami i grzybami

Instrukcja:



FARGOTEX



Strong 01



Strong 02



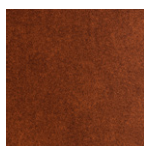
Strong 03



Strong 04



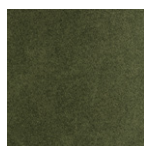
Strong 05



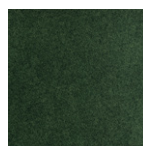
Strong 06



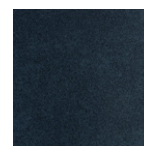
Strong 07



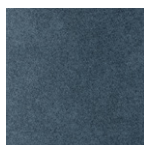
Strong 08



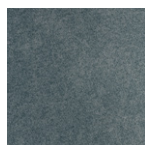
Strong 09



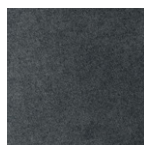
Strong 10



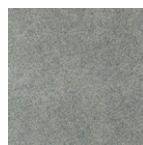
Strong 11



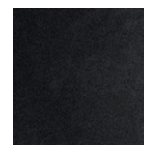
Strong 12



Strong 13



Strong 14



Strong 15

Katalog tkanin 2025

MTI-Furninova

Tailor

Grupa cenowa: D

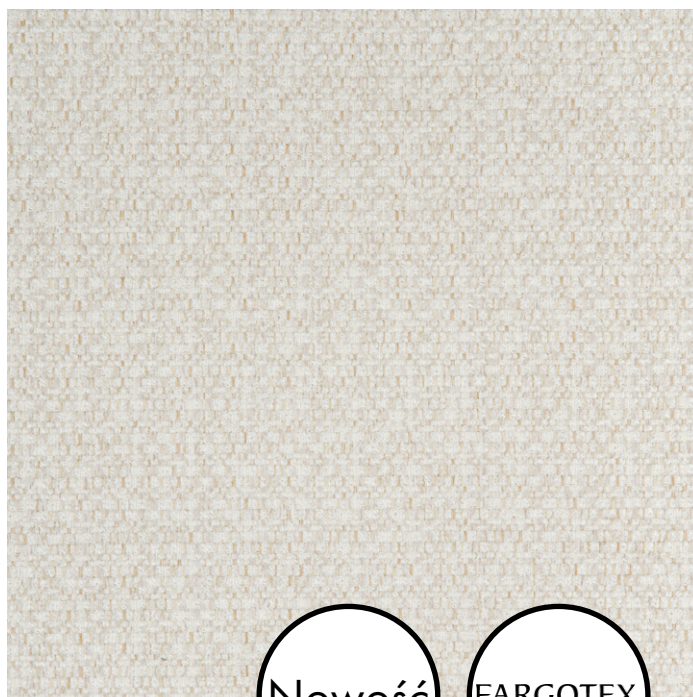
Skład: 60% Rolefin, 20% Poliester, 20% Poliakrylonitryl

Ścieralność: 35.000

Światłotrwałość:

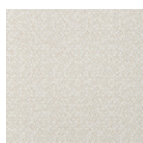
Mechacenie: 4

Uwagi: Oeko-Tex, łatwe czyszczenie wodą, Utrudnione wchłanianie płynów, Trudnopalna

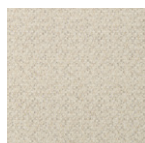


Nowość

FARGOTEX



Tailor 01



Tailor 02



Tailor 03



Tailor 04



Tailor 05



Tailor 06



Tailor 07



Tailor 08

Katalog tkanin 2025

MTI-Furninova

Tierra

Grupa cenowa: C

Skład: 59% Poliester z recyklingu, 41% Poliester

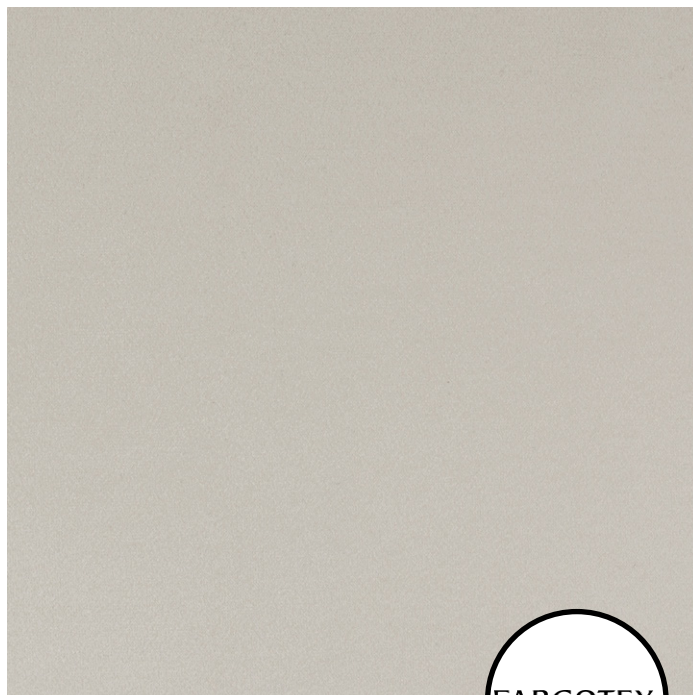
Ścieralność: 100.000

Światłotrwałość: 5

Mechacenie: 4-5

Uwagi: Welwet dzianinowy, Oeko-Tex, łatwe czyszczenie wodą, Trudnopalna, Przyjazna zwierzętom - odporna na zadrapania, Ochrona przed wirusami, bakteriami i grzybami

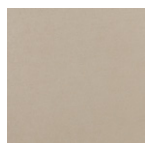
Instrukcja:



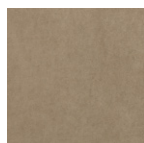
FARGOTEX



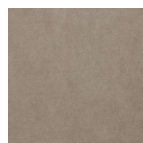
Tierra 01



Tierra 02



Tierra 03



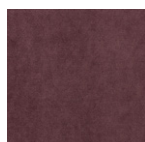
Tierra 04



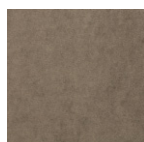
Tierra 05



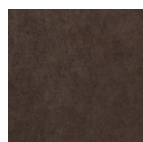
Tierra 06



Tierra 07



Tierra 08



Tierra 09



Tierra 10



Tierra 11



Tierra 12



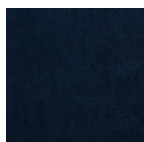
Tierra 13



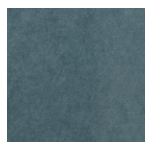
Tierra 14



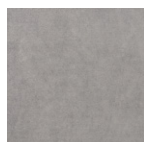
Tierra 15



Tierra 16



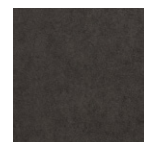
Tierra 17



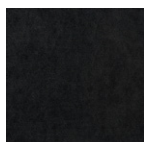
Tierra 18



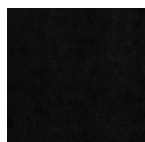
Tierra 19



Tierra 20



Tierra 21



Tierra 22

Katalog tkanin 2025

MTI-Furninova

Trapani

Grupa cenowa: B

Skład: 70% Poliester, 30% Bawełna

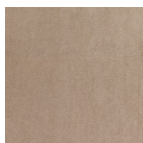
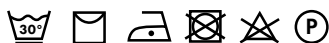
Ścieralność: 100.000

Światłotrwałość: 4-5

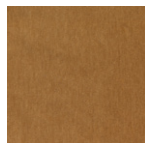
Mechacenie: 4

Uwagi: Oeko-Tex

Instrukcja:



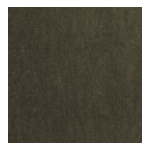
Sand 09



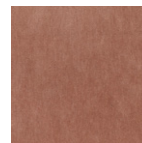
Mustard 17



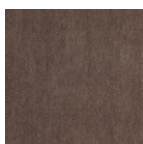
Bronze 19



Olive 26



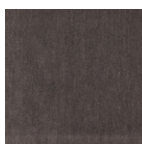
Peach 32



Mole 63



Stone 73



Grey 77

Katalog tkanin 2025

MTI-Furninova

Trionfo

Grupa cenowa: B

Skład: 100% Poliester

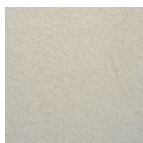
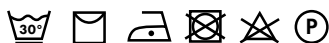
Ścieralność: 100.000

Światłotrwałość: 4

Mechacenie: 4

Uwagi: Oeko-Tex

Instrukcja:



Cream 03

Katalog tkanin 2025

MTI-Furninova

Tristan

Grupa cenowa: B

Skład: 60% Bawełna, 40% Len

Ścieralność: 20.000

Światłotrwałość: 5

Mechacenie: 5

Uwagi: Oeko-Tex, STONE WASHED - proces produkcji włókienniczej, nadający tkaninie charakter jeansu. Różnice w kolorze i wytarciu są efektem zamierzonym

Instrukcja:



Sand 09



Beige 62



Mole 63



Stone 73



Grey 77



Dark Grey 78

Katalog tkanin 2025

MTI-Furninova

Tulia

Grupa cenowa: C

Skład: 100% Poliester

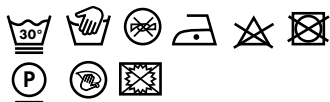
Ścieralność: 90.000

Światłotrwałość: 4-5

Mechacenie: 4-5

Uwagi: Tkanina szenilowa, Oeko-Tex, łatwe czyszczenie wodą, Utrudnione wchłanianie płynów, Trudnopalna

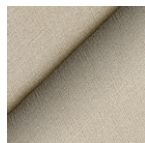
Instrukcja:



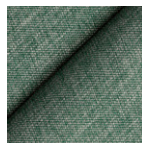
FARGOTEX



Tulia 01



Tulia 02



Tulia 03



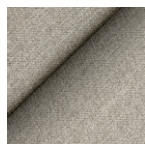
Tulia 04



Tulia 05



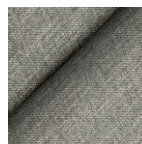
Tulia 06



Tulia 07



Tulia 08



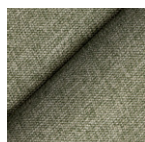
Tulia 09



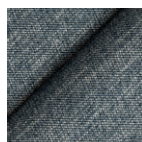
Tulia 10



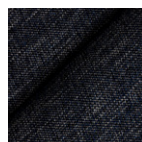
Tulia 11



Tulia 12



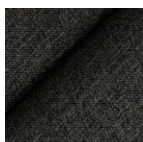
Tulia 13



Tulia 14



Tulia 15



Tulia 16

Katalog tkanin 2025

MTI-Furninova

Velvety

Grupa cenowa: D

Skład: 91% Poliester, 9% Bawełna

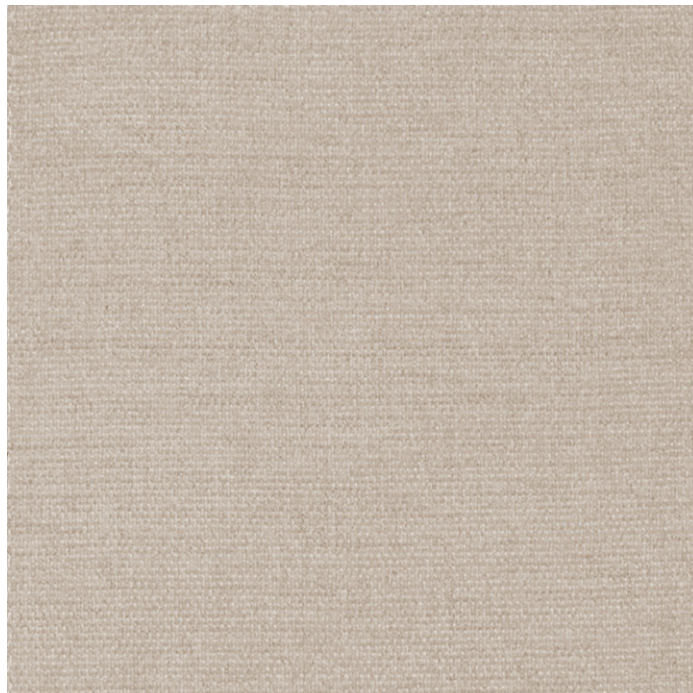
Ścieralność: 200.000

Światłotrwałość: 5-6

Mechacenie: 4-5

Uwagi: Oeko-Tex, EFFICIENCY - specjalna technologia tkania powoduje, że tkanina jest odporna i łatwa w utrzymaniu czystości. Większość plam można usunąć przy użyciu roztworu wody z mydłem.

Instrukcja:



Light Beige 60



Taupe 62



Ivory 03



Stone 73



Mole 63



Mustard 17



Peach 32



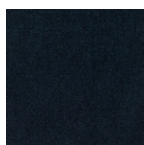
Bronze 64



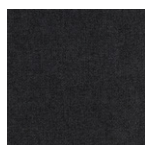
Green 22



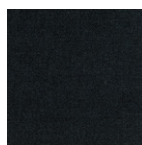
Dark Green 28



Dark Blue 48



Dark Grey 78



Dark Teal 29

Katalog tkanin 2025

MTI-Furninova

Veneto

Grupa cenowa: D

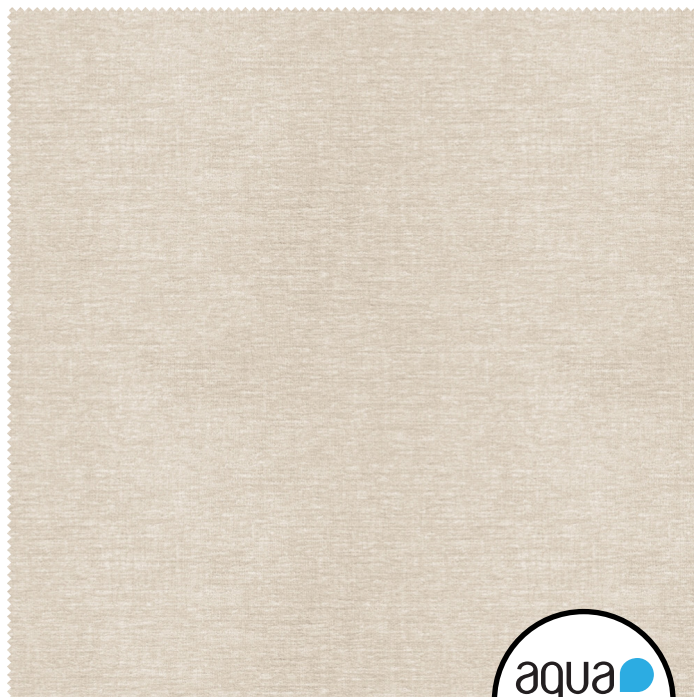
Skład: 100% Poliester z recyklingu

Ścieralność: 35.000

Mechacenie: 6-7

Uwagi: Oeko-Tex, Technologia Aquaclean - łatwe czyszczenie wodą, Ochrona przed wirusami i bakteriami

Instrukcja:



09



11



27



30



46



51



53



56



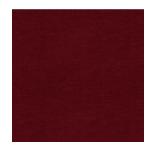
60



90



93



266



271



300



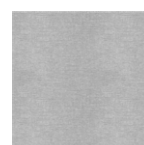
309



324



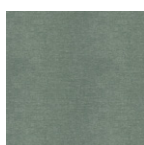
330



336



342



347



357



407

Katalog tkanin 2025

MTI-Furninova

Venice

Grupa cenowa: Exclusive

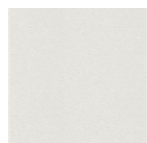
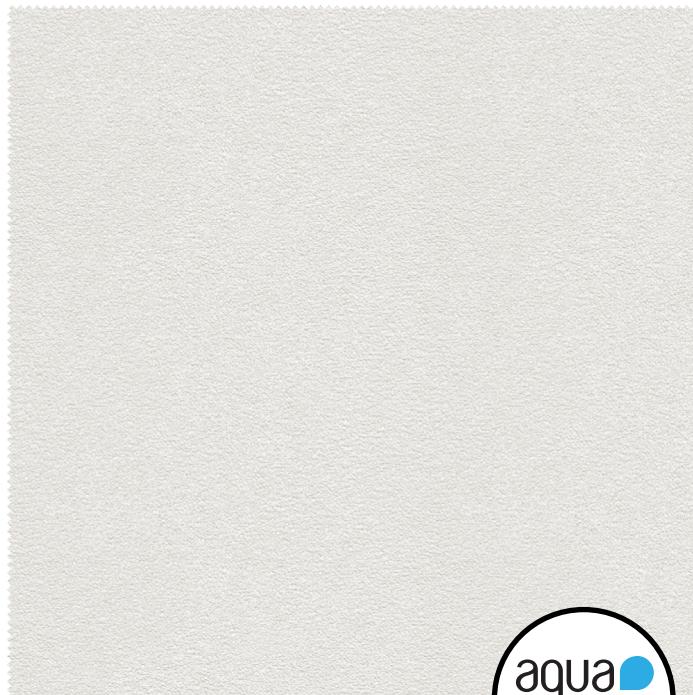
Skład: 71% Poliester, 18% Modakryl, 8% Bawełna z recyklingu, 3% Poliamid

Ścieralność: 60.000

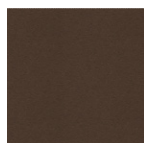
Mechacenie: 4-5

Uwagi: Oeko-Tex, Technologia Aquaclean - łatwe czyszczenie wodą, Ochrona przed wirusami i bakteriami

Instrukcja:



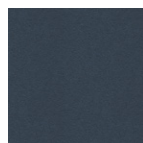
01



07



08



11



13



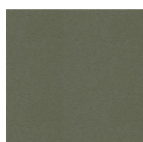
15



27



29



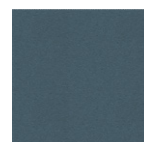
43



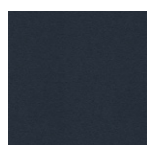
46



50



53



60



61



62



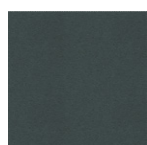
69



80



91



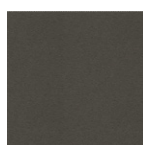
93



94



111



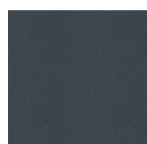
131



156



213



214



250



266



271



300



324

Katalog tkanin 2025

MTI-Furninova

Venice

Grupa cenowa: Exclusive

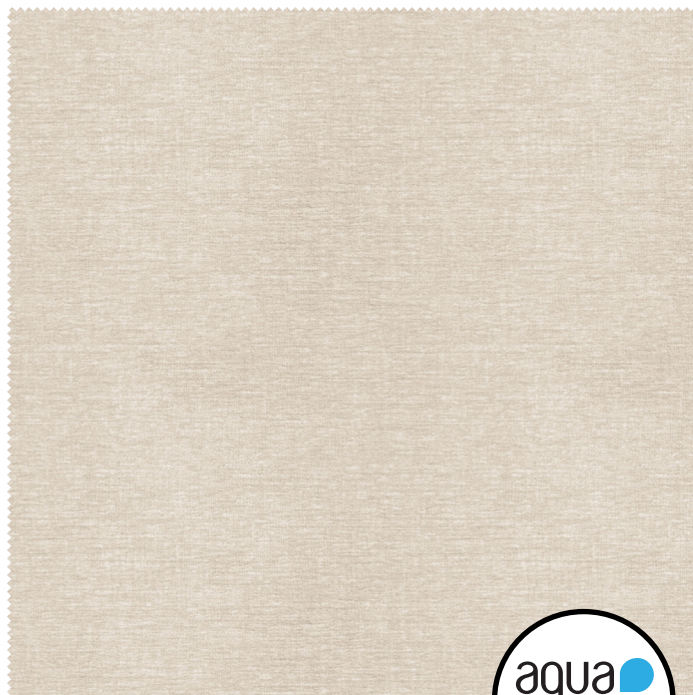
Skład: 71% Poliester, 18% Modakryl, 8% Bawełna z recyklingu, 3% Poliamid

Ścieralność: 60.000

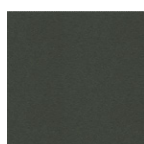
Mechacenie: 4-5

Uwagi: Oeko-Tex, Technologia Aquaclean - łatwe czyszczenie wodą, Ochrona przed wirusami i bakteriami

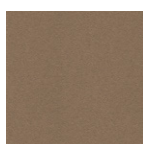
Instrukcja:



336



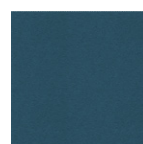
339



349



458



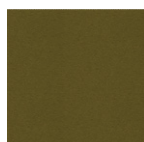
510



514



602



618



625



667

Katalog tkanin 2025

MTI-Furninova

Zoya

Grupa cenowa: C

Skład: 100% Poliester

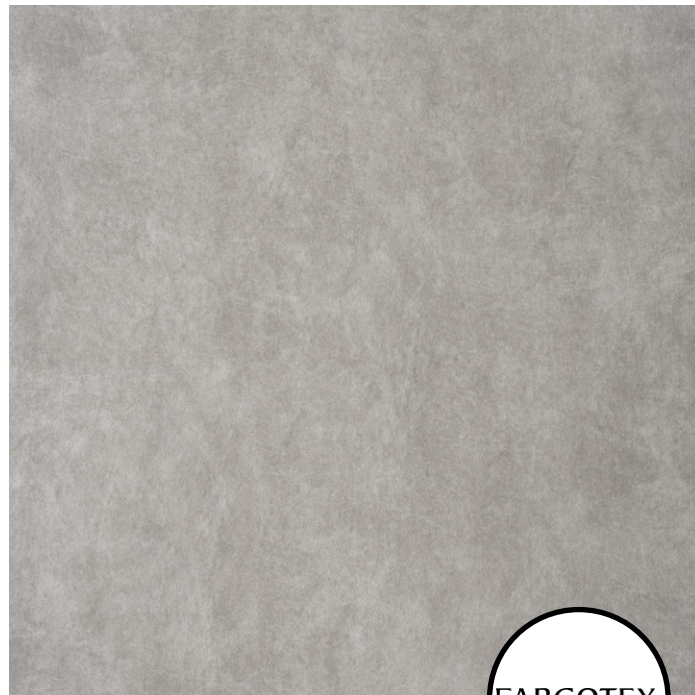
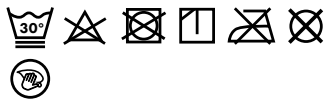
Ścieralność: 50.000

Światłotrwłość: 4-5

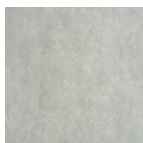
Mechacenie: 4

Uwagi: Dzianina, Oeko-Tex, Trudnopalna, Przyjazna zwierzętom - odporna na zadrapania

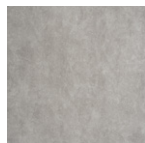
Instrukcja:



FARGOTEX



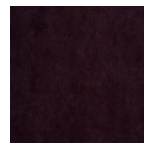
Zoya 01



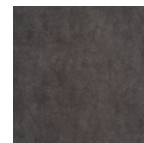
Zoya 02



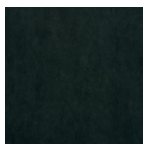
Zoya 03



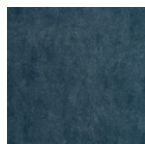
Zoya 04



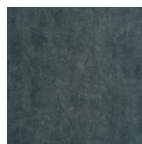
Zoya 05



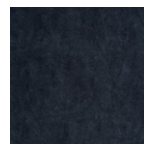
Zoya 06



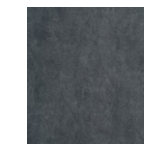
Zoya 07



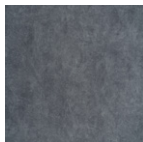
Zoya 08



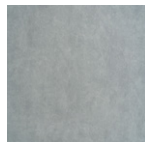
Zoya 09



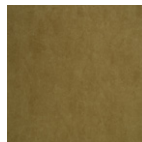
Zoya 10



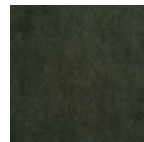
Zoya 11



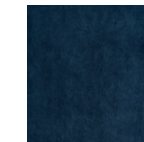
Zoya 12



Zoya 13



Zoya 14



Zoya 15